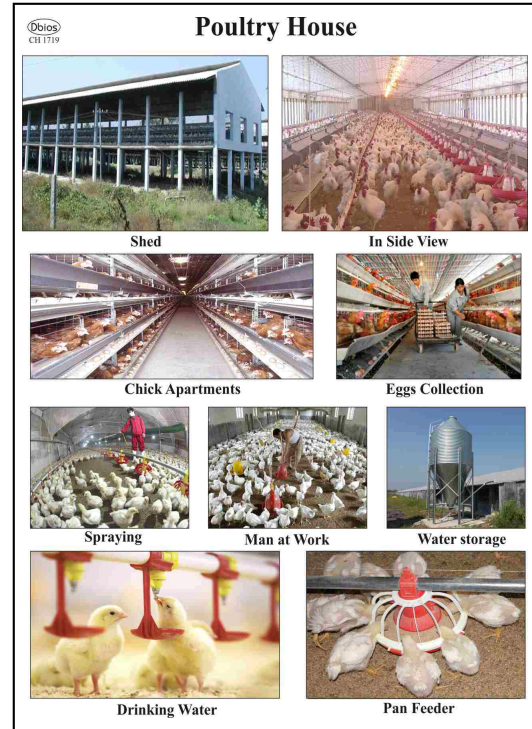


Size 50x 65 cms. Laminated and Attached with Durable Strips
 Size 75x 100 cms. Laminated and Attached with Plastic Rollers

Poultry

- Dpoul 01 Composition of rations for layers at different age groups
- Dpoul 02 Composition of Broiler Ration
- Dpoul 03 Food Habits of Birds
- Dpoul 04 Poultry Farm Equipments
- Dpoul 05 Poultry House
- Dpoul 06 Parts of Chicken & their Combs
- Dpoul 07 Body Parts of Chicken
- Dpoul 08 Types of Chick Combs
- Dpoul 09 Body Parts of Duck & Turkey
- Dpoul 10 Chick Embryo Development
- Dpoul 11 Stages of Bird Growth
- Dpoul 12 Types of Eggs
- Dpoul 13 Different Breeds of Chick
- Dpoul 14 Chick Circulatory System
- Dpoul 15 Chick Digestive System
- Dpoul 16 Chick Reproductive System
- Dpoul 17 Chick Urinogenital System Female
- Dpoul 18 Chick Urinogenital System Male
- Dpoul 19 Aseel
- Dpoul 20 Australorp
- Dpoul 21 Bramhas
- Dpoul 22 Giriraj
- Dpoul 23 Minorca
- Dpoul 24 Plymouth Rock
- Dpoul 25 Rhode Island Red
- Dpoul 26 Vanraj
- Dpoul 27 White Leg Horn
- Dpoul 28 Chick Nervous System



Dpoul 05



Dpoul 06



Dpoul 10

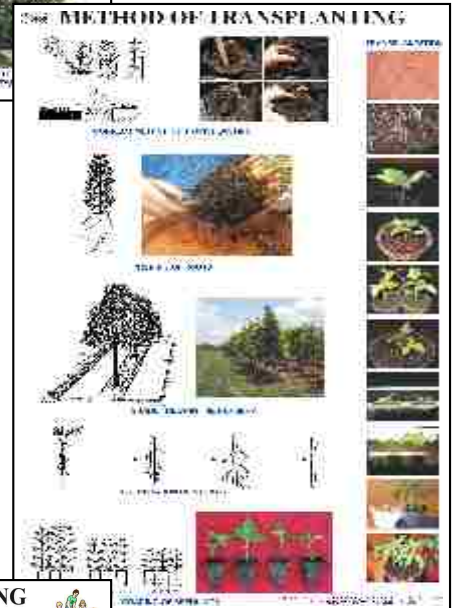
Size 50x 65 cms. Laminated and Attached with Durable Strips
 Size 75x 100 cms. Laminated and Attached with Plastic Rollers

forestry

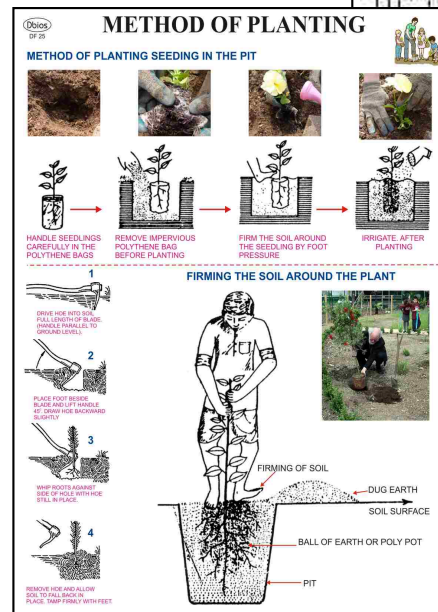
- DF 1 Silviculture and Forestry
- DF 2 Seed year
- DF 3 Patterns of Planting
- DF 4 Forest Thinning
- DF 5 Distribution of Forest Cover
- DF 6 Important Light Demander, Shade Bearer and Demanding Species
- DF 7 Nutrient Uptake and Release
- DF 8 Vegetation in Eastern and Himalayas
- DF 9 Climate and Forest Types in India
- DF 10 Forms of Crown
- DF 11 Average Height Growth in Some Species According to Quality
- DF 12 Site Quality And Diameter at Different Age In Some Species
- DF 13 Tree Classification In Regular Forests
- DF 14 Causes of Primary Succession
- DF 15 Champion And Seth's Classification of Forests of India
- DF 16 Choice of Species:- Site Factors
- DF 17 Purpose of Plantation : Sport Goods
- DF 18 Fast Growing Indigenous Species
- DF 19 Fast Grown Exotic Species
- DF 20 Nursery Bed
- DF 21 Method of Transplanting
- DF 22 Calendar of Nursery Operation
- DF 23 Methods of Soil Working
- DF 24 Seed Rate
- DF 25 Method of Planting
- DF 26 Spacing
- DF 27 Silviculture Systems
- DF 28 Hand Tools Used in Carpentry
- DF 29 Types of Chisels
- DF 30 Types of Saws-I
- DF 31 Types of Saws-II
- DF 32 Carpentry Joints-I
- DF 33 Carpentry Joints-II
- DF 34 Gross Features of Wood
- DF 35 Defects In Timber
- DF 36 Fungal Defects In Wood
- DF 37 Timber Decay
- DF 38 Types of Axes
- DF 39 Logging Instruments
- DF 40 Methods of Sawing Logs
- DF 41 Types of Leaf Margin
- DF 42 Types of Leaf Apex
- DF 43 Types of Leaf Base
- DF 44 Inversion Heterozygote
- DF 45 Translocation
- DF 46 Anther & Pollen Culture



DF 10



DF 21



DF 25

Size 50x 65 cms. Laminated and Attached with Durable Strips
 Size 75x 100 cms. Laminated and Attached with Plastic Rollers

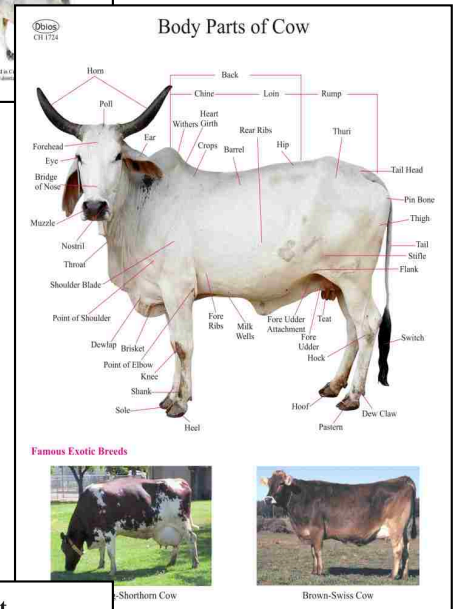
A Unique Collection of Charts are printed on light weight Styrene plastic & an eyelet is pierced on top for hanging purpose.

ANIMAL HUSBANDARY

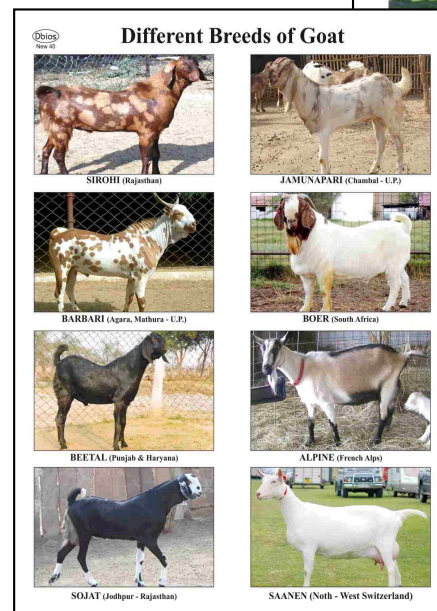
- DAH 01 Different Breeds of Cows
- DAH 02 Different Breeds of Buffalo
- DAH 03 Body Parts of Cow
- DAH 04 Bull Reproductive System
- DAH 05 Cow Reproductive System
- DAH 06 Ox Skeleton System
- DAH 07 Methods of Milking & Cross Section of Cow's Udder
- DAH 08 Oestrous cycle for different categories of animals
- DAH 09 Vaccinations schedule for dairy animals
- DAH 10 Dairy cattle shed map for 10 buffaloes/cows & their calves
- DAH 11 Housing System For Animals Head To Head
- DAH 12 Housing System For Animals Tail To Tail
- DAH 13 Composition of concentrate mixture according to level of milk production
- DAH 14 Composition of mineral mixture (without salt) for dairy animals
- DAH 15 Food Habits of Animals
- DAH 16 Appliances of Handling Animals
- DAH 17 Casting of Farm Animals
- DAH 18 Methods of Identification
- DAH 19 Disbudding & Dehorning
- DAH 20 Parasites of Cattle
- DAH 25 Different Breeds of Sheep
- DAH 26 Body Parts of Sheep
- DAH 27 Sheep Digestive System
- DAH 33 Different Breeds of Goat
- DAH 34 Goat Skeleton System
- DAH 35 Stomach of Goat
- DAH 40 Composition of rations for different classes of pigs
- DAH 41 Different Breeds of Pig
- DAH 42 Body Parts of Pig
- DAH 43 Pig Digestive System
- DAH 48 Horse Skeleton System
- DAH 49 Different Types of Larva
- DAH 50 L.H. Silkworm
- DAH 51 Fish Anatomy



DAH 01



DAH 03



DAH 33

Size 50x 65 cms. Laminated and Attached with Durable Strips
Size 75x 100 cms. Laminated and Attached with Plastic Rollers

- DAG 01 Types of Soil
- DAG 02 Different Implements or Cultivation of Field
- DAG 03 Irrigation System
- DAG 04 Meteorological Instrument
- DAG 05 Surveying and Leveling Instrument
- DAG 06 Tools and Implements for Horticultural Crops
- DAG 07 Cereal, Pulses and Oil Seed Crops
- DAG 08 Crops Rabi, Kharif And Summer
- DAG 09 Different Propagation Method
- DAG 10 Mendelian Genetics Monohybrid and Dihybrid Cross

PLANT PATHOLOGY

- DAG 14 Plant Diseases
- DAG 15 Yellow Mosaic of Beans
- DAG 16 Angular Leaf Spot of Cotton
- DAG 17 Black Spot of Rose
- DAG 18 Citrus Canker
- DAG 19 Downy Mildew of Grapes
- DAG 20 Leaf Blight of Potato
- DAG 21 Little Leaf of Tomato
- DAG 22 Mango Disease
- DAG 23 Oily Spot of Pomegranate
- DAG 24 Okra Pickles by Telethon
- DAG 25 Papaya Curl Leaves
- DAG 26 Red Rust of Wheat
- DAG 27 Rust of Wheat
- DAG 28 Sandal Spikes
- DAG 29 Tikka Disease of Groundnut
- DAG 30 Tomato Curl Leaves
- DAG 31 Blast of Rice
- DAG 32 Coffee Rust
- DAG 33 Grain Smut of Sorghum
- DAG 34 Koleroga
- DAG 35 Red Rot of Sugarcane

FRUITS

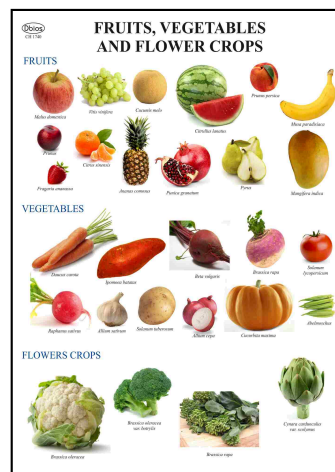
- DAG 40 Fruits, Vegetables and Flower Crops
- DAG 41 Major Exports Fruits & Vegetable
- DAG 42 Major Exotic Fruits & Vegetable
- DAG 43 Different Varieties of Mangos
- DAG 44 Different Varieties of Bananas
- DAG 45 Different Varieties of Chikoo
- DAG 46 Type of Pruning in Fruits Crops
- DAG 47 Fruit Preservation Methods
- DAG 48 Recipe of Jam, Jellies, Marmalade
- DAG 49 Recipe of Ketchup
- DAG 50 Recipe of Pickles



DAG 07



DAG 12



DAG 11



DAG 34

Agriculture

ENTOMOLOGY

- CH 353 Beneficial Insects
- CH 354 Harmful Insects
- CH 355 Food Grain Pests
- CH 355A Insects Mouth Parts
- CH 358 Butterfly L.H.
- CH 358A Types of Butterfly
- CH 359 Honey Bee L.H.
- CH 360 Silkworm L.H.
- CH 361 Grasshopper L.H.

PLANT BREADING

- CH 282 Emasculation, Bagging & Tagging
- CH 182 Root modification
- CH 183 Aerial Stem modification
- CH 184 Leaf modification
- CH 185 Vegetative propagation
- CH 186 Artificial Vegetative propagation
- CH 187 Specialized stems

FLORICULTURE

- CH 151 Plant Kingdom - I (Flowering)
- CH 151A Plant Kingdom - II (Non-flowering)
- CH 159 Comparison of Monocot & Dicot Plants
- CH 161 Pea Germination
- CH 162 Castor seed Germination
- CH 163 Rice Germination
- CH 164 Hypogeal Seed Germination (Gram & Maize)
- CH 165 Epigeal Seed Germination (Bean & Sunflower)

- CH 18 Mendelian Explanation Garden Pea-Complete Dominance
- CH 45 Plant Respiration
- CH 46 Plant Transpiration
- CH 47 Plant Osmosis & Root Pressure
- CH 55 Photosynthesis
- CH 97 Albugo candida
- CH 98 Phytophthora infestans
- CH 103A Claviceps (Ergot of Rye.)
- CH 103B Alternaria
- CH 103C Ustilago
- CH 104 Plant Diseases : Bacterial & Viral
- CH 105 Plant Diseases: Fungal
- CH 106 Medicinal Plants -I (Exported from India)
- CH 107 Medicinal Plants -II (Imported in India)
- CH 108 Medicinal Plants -III (Endangered Species)
- CH 109 Medicinal Plants -IV (Prohibited to Export from India)
- CH 144 Bentham & Hooker Classification
- CH 145 Plant cell (Ultra structure)
- CH 146 Mitosis in Plants
- CH 147 Meiosis in Plants
- CH 166 Dicot seed
- CH 167 Monocot seed
- CH 169 Dispersal of Seeds & Fruits
- CH 170 Classification of Fruits
- CH 173 Stomata
- CH 174 T.S. Dicot root
- CH 175 T.S. Monocot root
- CH 176 T.S. Dicot stem
- CH 177 T.S. Monocot stem
- CH 178 T.S. Dicot leaf
- CH 179 T.S. Monocot leaf
- CH 180 Secondary Growth in Dicot Stem
- CH 181 Secondary Growth in Dicot root
- CH 200 Parts of Flower
- CH 201 Fertilization showing germination of Pollen grain
- CH 215 Mitosis vs Meiosis
- CH 216 Inflorescence-1 (Simple, Racemose & Cymose)
- CH 217 Inflorescence - II (Compound & Special)
- CH 233 Brassica campestris (Mustard)
- CH 234 Papaver rhoeas (Garden Poppy)
- CH 243 Lathyrus odoratus (Papilionatae)
- CH 244 Cassia fistula (Caesalpinioideae)
- CH 268 Allium cepa (Onion)
- CH 269 Avena sativa (Oat)
- CH 270 Zea mays (Maize)
- CH 271 Coriandrum sativum (Dhania)
- CH 273 Triticum vulgare (Wheat)



CH 104

DESH BIOLOGICAL WORKS

1245, Hargoolal Road, Ambala Cantt-133001, Haryana (INDIA)

Ph. : 0171-4007531, 2643822, Mob. 09896662901, 09729010431

Website : www.dbios.org, e-mail: desh@dbios.org, deshbiological@gmail.com