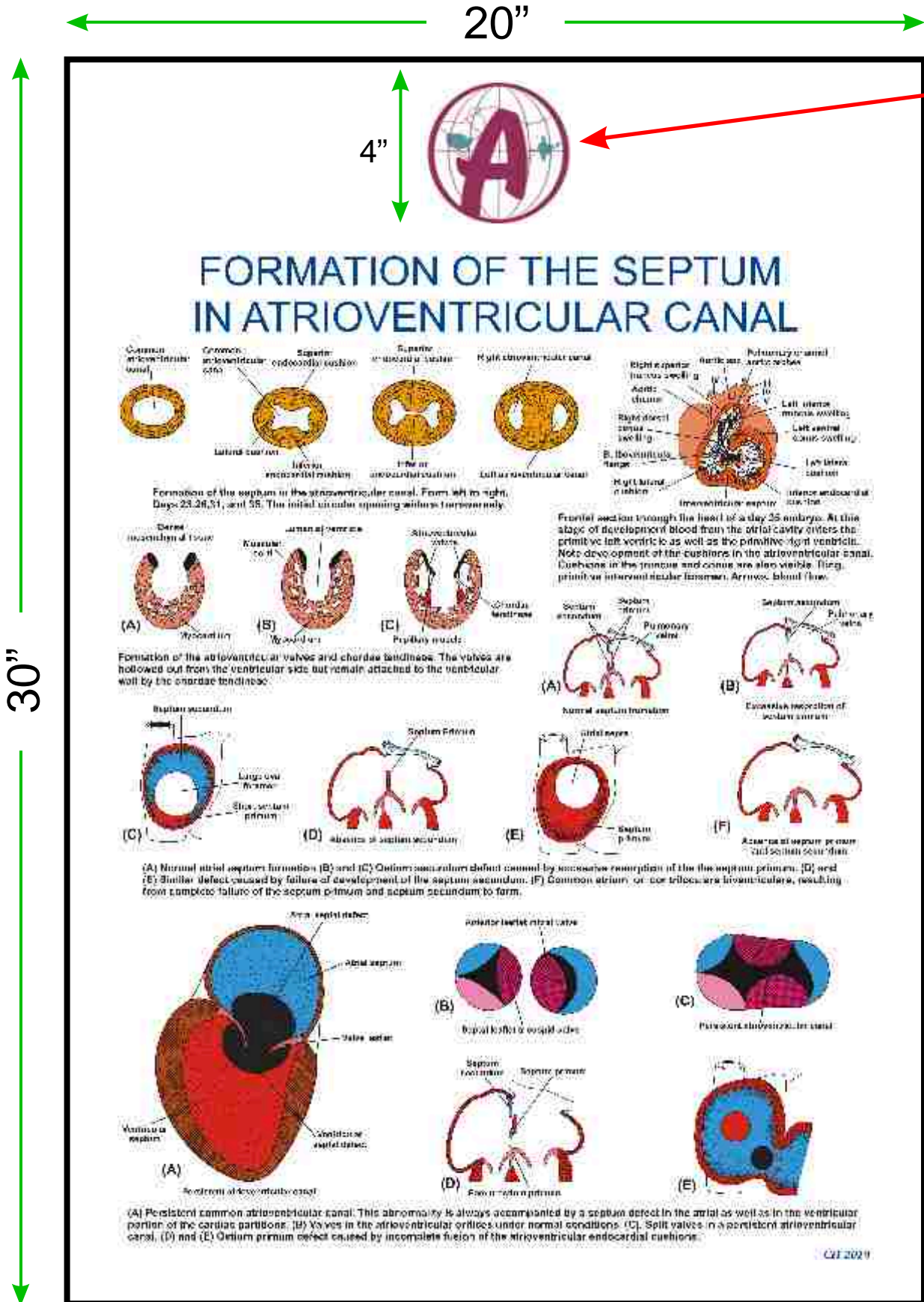


Customised Charts

Size 20"x30" Laminated & Mounted Framed on Board



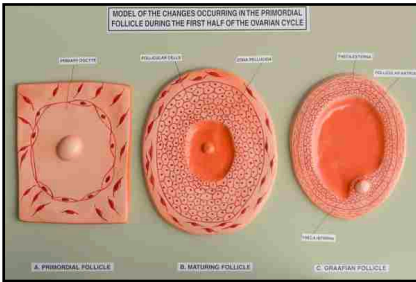
College
Logo
& Name

Dbios anatomy models, Charts Slides

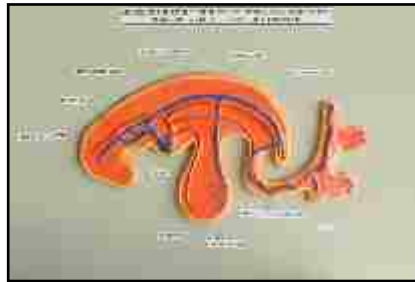
w.e.f. Aug. 01, 2018

List No. 2D

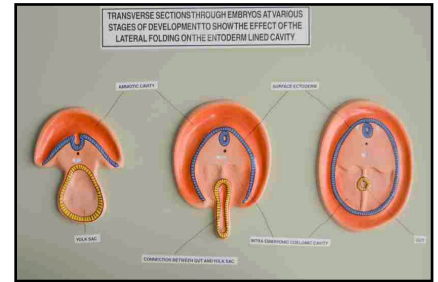
EM 3 Changes Occuring In Primordial Follicle During 1st Half Of Ovarian Cycle



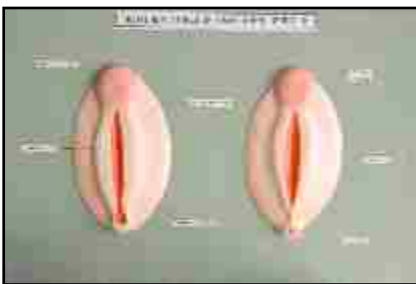
EM 24 Extra and Intra-embryonic Vascularization In an Embryo at The End of 3rd Week



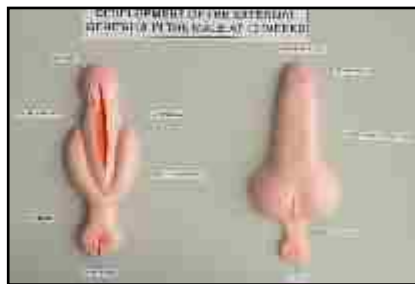
EM 25 Transverse sections through embryos at various stages of development to show the effect of the lateral folding on the endoderm lined cavity



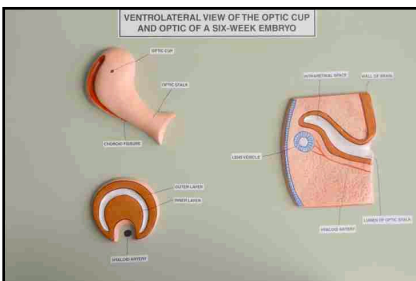
EM 50 Indifferent stages of the External Genitalia



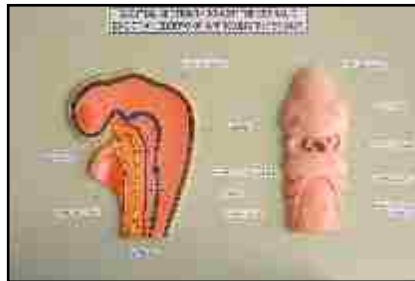
EM 51 Development of the External Genitalia in the Male at 10 weeks



EM Series of Human Embryos to show the Development of the Pharyngeal Arches



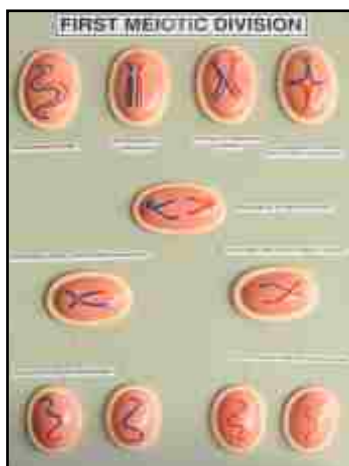
EM 74 Ventrolateral view of the optic cup and optic of a Six-week embryo



EM Sagittal section through the cephalic end of an embryo of approximately 25 Days



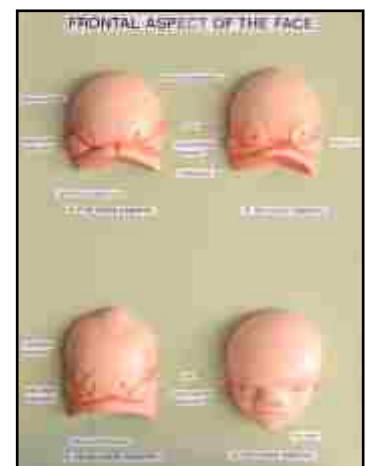
EM 78 Ventral view of the palate Gum, Lip and Nose



EM 1 First Meiotic Division



EM 77 Development of Ear



EM 75 Frontal aspect of the Face

GENERAL EMBRYOLOGY

- EM 1. FIRST MEIOTIC DIVISION
- EM 2. SECOND MEIOTIC DIVISION

OVULATION TO IMPLANTATION (FIRST WEEK OF DEVELOPMENT)

- EM 3. CHANGES OCCURRING IN PRIMORDIAL FOLLICLE DURING 1st HALF OF OVARIAN CYCLE
- EM 5. GRAAFIAN FOLLICLE, OVULATION, CORPUS LUTEUM
- EM 6. RELATIONSHIP OF FIMBRIAE AND OVARY
- EM 7. SCHEMATIC REPRESENTATION OF THE THREE PHASES OF OOCYTE PENETRATION
- EM 8. SCHEMATIC REPRESENTATION OF A SECTION THROUGH A HUMAN BLASTOCYST RECOVERED FROM THE UTERINE CAVITY AT APPROXIMATELY 4 ½ DAYS
- EM 9. SCHEMATIC REPRESENTATION OF THE EVENTS TAKING PLACE DURING THE FIRST WEEK OF HUMAN DEVELOPMENT
- EM 10. SCHEMATIC REPRESENTATION OF THE CHANGES TAKING PLACE IN THE UTERINE MUCOSA CORRELATED WITH THOSE IN THE OVARY

FORMATION OF THE BILAMINAR GERM DISC (SECOND WEEK OF DEVELOPMENT)

- EM 11. HUMAN BLASTOCYST 9 DAYS
- EM 12. HUMAN BLASTOCYST OF APP. 12 DAYS
- EM 13. HUMAN BLASTOCYST 13 DAYS

FORMATION OF THE TRILAMINAR GERM DISC (THIRD WEEK OF DEVELOPMENT)

- EM 14. DEVELOPMENT OF THE VILLUS
- EM 15. VILLUS AT THE END OF THE THIRD WEEK OF THE DEVELOPMENT
- EM 16. PRESOMITE EMBRYO AND THE TROPHOBLAST AT THE END OF THE THIRD WEEK

DERIVATIVES OF THE GERM LAYER

- EM 17. PRESOMITE EMBRYO OF A 16 DAYS
- EM 18. PRESOMITE EMBRYO OF A 19 DAYS
- EM 19. PRESOMITE EMBRYO OF A 20 DAYS
- EM 20. HUMAN EMBRYO AT 22 DAYS
- EM 21. 14 SOMITE EMBRYO (APP. 25 DAYS)
- EM 22. 25 SOMITE EMBRYO 28 DAYS
- EM 23. TRANSVERSE SECTIONS THE DEVELOPMENT OF THE MESODERMAL GERM LAYER DAY 17,19, 20,21 DAYS
- EM 24. EXTRA AND INTRA –EMBRYONIC VASCULARIZATION IN AN EMBRYO AT THE END OF 3rd WEEK
- EM 25. TRANSVERSE SECTION THROUGH EMBRYO AT VARIOUS STAGES OF DEVELOPMENT TO SHOW THE EFFECT OF THE LATERAL FOLDING ON THE ENTODERM-LINED CAVITY CONNECTION BETWEEN THE GUT AND THE YOLK SAC, THE CLOSED VENTRAL ABDOMINAL WALL AND THE GUT SUSPENDED FROM THE DORSAL ABDOMINAL WALL

DEVELOPMENT OF THE FETAL MEMBRANES AND PLACENTA

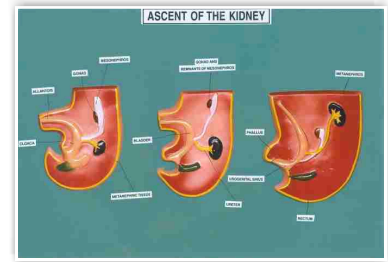
- EM 26. HUMAN EMBRYO AT THE BEGINNING OF THE SECOND MONTH OF DEVELOPMENT
- EM 27. STRUCTURE OF THE VILLI AT VARIOUS STAGES OF DEVELOPMENT
- EM 28. RELATION OF THE FETAL MEMBRANES & THE WALL OF THE UTERUS
- EM 29. PLACENTA IN THE SECOND HALF OF PREGNANCY
- EM 30. FULL TERM PLACENTA
- EM 31. DEVELOPMENT OF DIZYGOTIC TWINS ,EACH EMBRYO NORMALLY HAS ITS OWN AMNION, CHORION, & PLACENTA



EM-36



EM-39



EM-41

- EM 32. RELATION OF FETAL MEMBRANES IN MONOZYGOTIC TWINS
- EM 33. SKULL OF NEW BORN
- EM 34. DEVELOPMENT OF THE LIMB BUDS AT 5,6,8 WEEKS
- EM 35. FORMATION OF THE VERTEBRAL COLUMN AT VARIOUS STAGES OF DEVELOPMENT

MUSCULAR SYSTEM

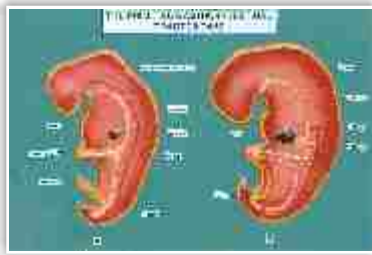
- EM 36. TRANSVERSE SECTION THROUGH A 4 WEEK EMBRYO SHOWING CELL OF MYOTOME & MIGRATION OF CELLS OF MYTOME
- EM 37. TRANSVERSE SECTION THROUGH THE THORACIC REGION OF A FIVE WEEK EMBRYO

UROGENITAL SYSTEM

- EM 38. TRANSVERSE SECTIONS THROUGH EMBRYOS AT VARIOUS STAGES OF DEVELOPMENT TO SHOW THE FORMATION OF THE NEPHRIC TUBULE AT 21 DAYS & 25 DAYS
- EM 39. DEVELOPMENT OF THE RENAL PELVIS, CALYCES AND COLLECTING TUBULES OF THE METANEPHROS AT 6WEEKS, 7WEEKS, NEW BORN
- EM 40. RELATIONSHIP OF HINDGUT AND CLOACA AT THE END OF 5th WEEKS
- EM 41. ASCENT OF THE KIDNEY
- EM 42. DIVISION OF THE CLOACA INTO THE UROGENITAL SINUS AND ANORECTAL CANAL AT THE END OF 5 WEEK, 7 WEEK & 8 WEEK
- EM 43. DEVELOPMENT OF THE UROGENITAL SINUS INTO THE URINARY BLADDER
- EM 44. RELATIONSHIP OF THE URETERS AND MESONEPHRIC DUCTS DURING DEVELOPMENT
- EM 45. TRANSVERSE SECTION THROUGH THE TESTIS IN THE 8th WEEK OF THE DEVELOPMENT
- EM 46. T. S. OVARY AT THE 7th WEEK OF DEVELOPMENT SHOWING THE DEGENERATION OF THE PRIMITIVE SEX CORDS AND THE FORMATION OF THE CORTICAL CORDS
- EM 47. GENITAL DUCTS IN THE FEMALE AT THE END OF THE SECOND MONTH OF DEVELOPMENT
- EM 48. FORMATION OF THE UTERUS AND VAGINA
- EM 49. FORMATION OF THE UTERUS AND VAGINA AT VARIOUS STAGES OF DEVELOPMENT
- EM 50. INDIFFERENT STAGE OF THE EXTERNAL GENITALIA
- EM 51. DEVELOPMENT OF EXTERNAL GENITALIA IN THE MALE AT 10 WEEKS
- EM 52. DEVELOPMENT OF THE EXTERNAL GENITALIA IN THE FEMALE AT THE 5 MONTH AND IN THE NEW BORN
- EM 53. DESCENT OF THE TESTIS, DURING THE 2nd MONTH, MIDDLE OF THE 3rd MONTH , 7th MONTH AND SHORTLY AFTER BIRTH
- EM 54. TESTIS , EPIDIDYMIS , DUCTUS DEFERENS, AND THE VARIOUS LAYERS OF THE ABDOMINAL WALL WHICH SURROUND THE TESTIS IN THE SCROTUM

CARDIOVASCULAR SYSTEM

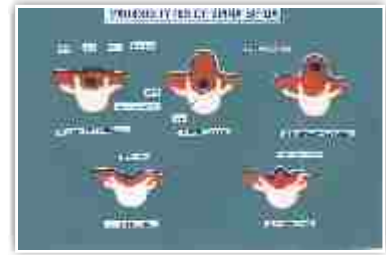
- EM 55. SEPTATION OF VENTRICLE & BULBUS CORDIS
- EM 56. FORMATION OF THE ATRIOVENTRICULAR VALVES AND CHORDAL TENDINEAE
- EM 57. DEVELOPMENT OF THE UMBILICAL AND VITELLINE VEINS AT THE END OF 4th WEEK, 5th WEEK, IN THE 6th WEEK AND IN THE THIRD MONTH



EM-68



EM-67



EM-73

- EM 58. MAIN INTRA AND EXTRA-EMBRYONIC ARTERIES & VEINS IN A 4 mm. EMBRYO (END OF THE 4th WEEK)
- EM 59. MAIN COMPONENTS OF THE VENOUS SYSTEM IN A 4 MM. EMBRYO (END OF THE 4th WEEK)
- EM 60. HUMAN CIRCULATORY BEFORE BIRTH
- EM 61. HUMAN CIRCULATORY AFTER BIRTH

DIGESTIVE TUBE AND ITS DERIVATIVES

- EM 62. SAGITTAL SECTION THROUGH THE CEPHALIC END OF EMBRYO APP. 25 DAYS
- EM 63. SERIES OF HUMAN EMBRYOS TO SHOW THE DEVELOPMENT OF THE PHARYNGEAL ARCHES APP. 25 DAYS, 28 DAYS AND FIVE WEEKS
- EM 64. DEVELOPMENT OF THE PHARYNGEAL CLEFTS AND POUCHES
- EM 65. REPRESENTATION OF THE MIGRATION OF THE THYMUS, PARATHYROID GLANDS, AND ULTIMOBRANCHIAL BODY
- EM 66. DEVELOPMENT OF TONGUE (SET OF 4)
- EM 67. SUCCESSIVE STAGES IN THE DEVELOPMENT OF THE TRACHEA AND LUNGS AT THREE WEEKS, FOUR WEEKS, FIVE WEEKS & SIX WEEKS
- EM 68. THE PRIMITIVE GASTRO-INTESTINAL TRACT 25 DAYS
- EM 69. DEVELOPMENT OF LIVER
- EM 70. DEVELOPMENT OF STOMACH
- EM 71. DEVELOPMENT OF PANCREAS

CENTRAL NERVOUS SYSTEM

- EM 72. DORSAL VIEW OF A LATE PRESOMITE EMBRYO AND DORSAL VIEW OF HUMAN EMBRYO 18 DAYS & 20 DAYS
- EM 73. VARIOUS TYPE OF SPINA BIFIDA
- EM 74. VENTROLATERAL VIEW OF THE OPTIC CUP AND OPTIC STALK OF 6 WEEK EMBRYO

FACE, NOSE & PLATE

- EM 75. FRONTAL ASPECT OF THE FACE AT FIVE WEEK EMBRYO AND SIX WEEK, SEVEN WEEKS & TEN WEEKS (DEVELOPMENT OF FACE)
- EM 76. DEVELOPMENT OF EYE
- EM 77. DEVELOPMENT OF EAR
- EM 78. VENTRAL VIEW OF THE PALATE GUM, LIP AND NOSE

INTEGUMENTARY SYSTEM

- EM 79. DEVELOPMENT OF A HAIR AND A SEBACEOUS GLAND AT FOUR MONTHS, SIX MONTHS, NEWBORN
- EM 80. DEVELOPING MAMMARY GLAND AT THE THIRD AND EIGHTH MONTHS AND THE POSITIONS OF ACCESSORY NIPPLES
- EM 81. FORMATION OF THE TOOTH AT SUCCESSIVE STAGES OF DEVELOPMENT AT 8 WEEK, 10 WEEKS, 3 MONTHS, 6 MONTH EIGHT MONTHS AND AFTER ERUPTION

Embryo Charts Embryo



**Size : 20"X26" Laminated and attached with durable strips
OR Laminated and Framed on Board**

All Charts Also Available Size: 30"x40" Laminated & Fitted with Plastic Rollers

- CH2001 DEVELOPMENT OF EMBRYO IN FIRST WEEK.
- CH2002 DEVELOPMENT OF EMBRYO IN SECOND WEEK
- CH2003 DEVELOPMENT OF EMBRYO IN THIRD WEEK.
- CH2004 DEVELOPMENT OF EMBRYO IN FOURTH WEEK.
- CH2005 DEVELOPMENT OF EMBRYO IN FIFTH WEEK.
- CH2006 DEVELOPMENT OF EMBRYO IN SIXTH WEEK.
- CH2007 DEVELOPMENT OF EMBRYO IN SEVENTH WEEK.
- CH2008 FETUS IN 9th, 11th, 12th & 18th WEEK OF DEVELOPMENT.
- CH2009 FETUS IN 19th, 23rd WEEK OF DEVELOPMENT & 7th MONTH OLD FETUS.

SPECIAL EMBRYOLOGY

- CH2010 DEVELOPMENT OF SKELETAL SYSTEM I.
- CH2011 DEVELOPMENT OF SKELETAL SYSTEM II
- CH2012 DEVELOPMENT OF MUSCULAR SYSTEM I.
- CH2003 DEVELOPMENT OF MUSCULAR SYSTEM II.
- CH2014 DEVELOPMENT OF BODY CAVITIES I.
- CH2015 DEVELOPMENT OF BODY CAVITIES II.

DEVELOPMENT OF CARDIOVASCULAR SYSTEM

- CH2016 FORMATION OF CARDIAC LOOP
- CH2017 DEVELOPMENT OF THE SINUS VENOSUS
- CH2018 FORMATION OF THE CARDIAC SEPTA IN COMMON ATRIUM
- CH2019 FORMATION OF THE SEPTUM IN ATRIOVENTRICULAR CANAL
- CH2020 FORMATION OF THE SEPTUM IN AORTA & CONUS CORDIS
- CH2021 FORMATION OF THE SEPTUM IN VENTRICLES
- CH2022 DEVELOPMENT OF ARTERIAL SYSTEM
- CH2023 DEVELOPMENT OF VENOUS SYSTEM
- CH2024 CIRCULATION BEFORE & AFTER BIRTH

DEVELOPMENT OF DIGESTIVE SYSTEM

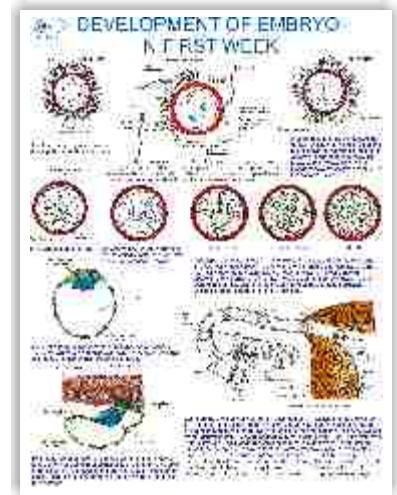
- CH2025 MOLECULAR REGULATION OF GUT TUBE DEVELOPMENT
- CH2026 MESENTERIES
- CH2027 STOMACH DEVELOPMENT
- CH2028 LIVER, GALL BLADDER & PANCREAS DEVELOPMENT
- CH2029 MIDGUT & HINDGUT DEVELOPMENT

DEVELOPMENT OF UROGENITAL SYSTEM

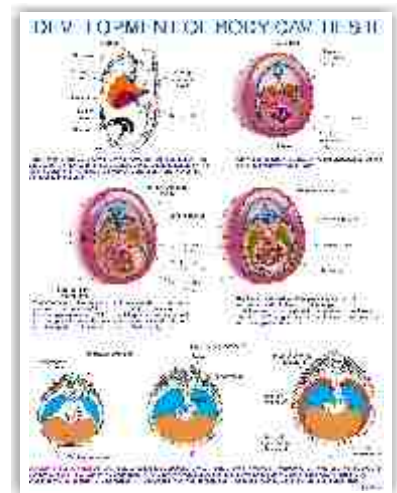
- CH2030 PRONEPHROS, MESONEPHROS & METANEPHROS &
MOLECULAR REGULATION OF THE KIDNEY
- CH2031 DEVELOPMENT OF MALE GENITAL SYSTEM
- CH2032 DEVELOPMENT OF FEMALE GENITAL SYSTEM
- CH2033 DEVELOPMENT OF RESPIRATORY SYSTEM
- CH2034 DEVELOPMENT OF HEAD
- CH2035 DEVELOPMENT OF NECK
- CH2036 DEVELOPMENT OF EAR
- CH2037 DEVELOPMENT OF EYE
- CH2038 DEVELOPMENT OF INTEGUMENTARY SYSTEM
- CH2039 DEVELOPMENT OF CENTRAL NERVOUS SYSTEM I
- CH2040 DEVELOPMENT OF CENTRAL NERVOUS SYSTEM II
- CH2041 DEVELOPMENT OF CENTRAL NERVOUS SYSTEM III

ANY OTHER EMBRYOLOGY CHART CAN

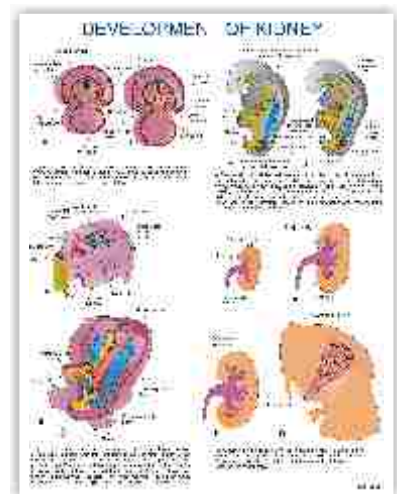
BE MADE ON DEMAND IN SIZE 20"X26" LAMINATED & FRAMED ON BOARD



CH 2001



CH 2015

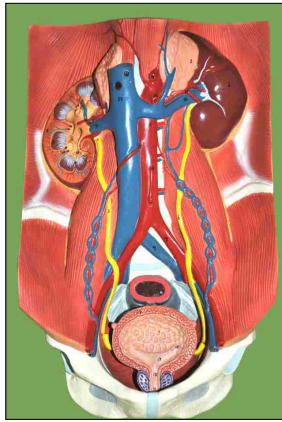


CH 2030

AM-53
Fetal Circulation



AM-58
Urinary System



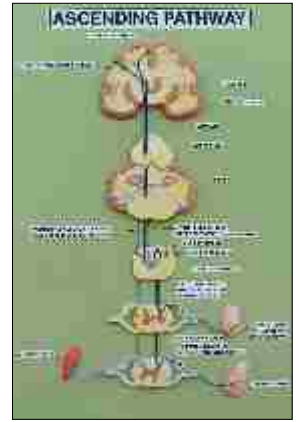
AM-74
Structure of Bone



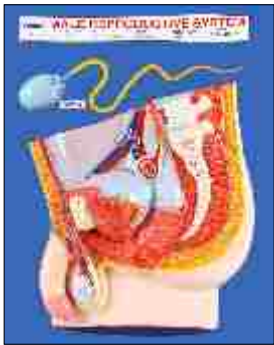
AM 29 The Larynx



AM 10A Ascending Pathway



AM 65A Male Rep. System



AM 66A
Female Rep. System



AM 67 THE SIZE AND THE POSITION OF THE UTERUS IN A FULL TERM PREGNANCY



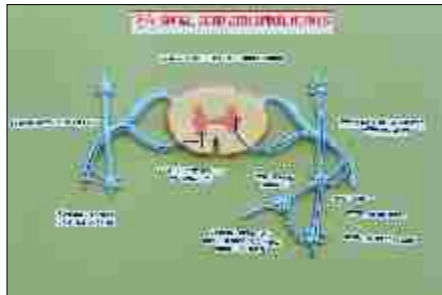
AM 64A Hernia



AM 38 Liver Duodenum & Pancreas



AM-15 Spinal cord with spinal nerve



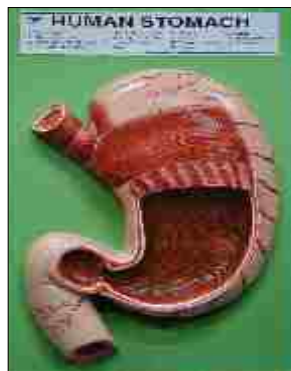
AM 9A Reflex Arc



AM 30
Larynx deep side view



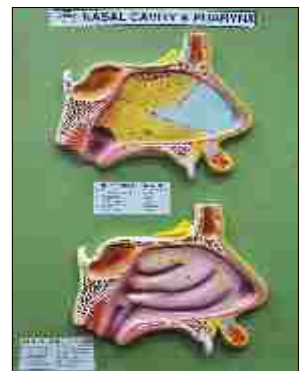
AM 41
Human Stomach



AM 37
Large with gall Bladder



AM 28
Nasal Cavity & Pharynx



MODELS MADE FROM GLASS FIBRE-UNBREAKABLE MATERIAL WASHABLE, AGAIN PAINTABLE
THESE ARE RARE MEDICAL GRADE MODELS FROM DBIOS

Am1 MODEL OF MAN OR WOMAN LIFE SIZE160cms

Showing superficial dissection on one side. And other side intact. Arms & Legs are detachable. The internal organs in abdominal & thoracic wall are detachable



AM-3A

AM2. HUMAN TORSO WITH HEAD life size torso that include the lungs with parts of ribs. Head and all major organs are removable with interchangeable MALE & FEMALE genital organs dissectable.

AM2-A. IMPORTED Male/Female Torso 38 parts(made of Rubber), Female Breast Part, Head, Brain, Lungs, Heart, Liver, Kidney, Pancreas, Spleen, Stomach, Male & Female genitalia.



AM-8

AM3. HUMAN TORSO WITH HEAD Life Size. Sexless Height 90 cms. Excluding arms & legs. Showing superficial dissection on one side and other side intact. The internal organs in abdominal & thoracic wall are shown in situ. Half of the skull cap can be removed and brain can be taken out.

AM3A IMPORTED HUMAN TORSO WITH HEAD Sexless Height 50 cms. made from rubber material with 10 removable organs on plastic base.

AM4. IMPORTED MEDIAN SECTION OF THE HEAD & NECK - An exquisitely painted cross section of the head and neck showing the brain, nose, mouth, larynx and vertebra column of the neck, gullet and buccal cavity are numbered. Made of fiberglass, mounted on base. Size: 10"x12.3/4"x2"

AM5. HEAD & NECK dissectable in two parts in L.S. showing superficial dissection on one side and other intact. Half brain can be taken out.

AM6. BRAIN WITH SKULL

AM 7. HUMAN BRAIN 4 PARTS

AM7A. IMPORTED HUMAN BRAIN IN 4 PARTS - This 4-part brain is sectioned in half; the right side divides into cerebral lobe and medulla with cerebellum. The cerebellum can be removed from the left half. 24 numbered structures correspond to key. Made of fiberglass, may be removed from base. Size: 7"x7.3/4"x7.1/2"



AM-7A

AM8. BRAIN IN 8 PARTS in cavity

AM9. MIDSAGITTAL SECTION THROUGH THE BRAIN extra large showing all details



AM9A. REFLEXARC



AM-16

AM10A. Ascending Pathway

AM10B. Descending Pathway

AM10. STRUCTURE OF CEREBELLUM a) Superior view
b) an interior view c) a sagittal view

AM11. SAGITTAL SECTION OF THE MEDULLA OBLONGATA & PONS
Showing the Cranial Nerve Nuclei of Gray Matter.

AM12. THE AUTONOMIC NERVOUS SYSTEM showing relationship of
different organs to the spinal cord.

AM13. HUMAN NERVOUS SYSTEM half the natural size schematic
presentation of the central and peripheral system.

AM14. VISUAL CENTRAL NERVOUS SYSTEM PATHWAYS. (SUPERIOR VIEW)

AM 14A IMPORTED NEURON MODEL

AM15. SPINAL CORD WITH SPINAL NERVES.

AM16. HUMAN EYE IN SOCKET vertical section. Showing muscle,
optic nerves, crystalline lens, iris cornea etc.
Dissectable in 7 parts.

AM17. **IMPORTED EYE** Approximately 5 times life-size, this finely
painted and numbered fiberglass divides into 7 parts 2 Part outer eye,
Retina and vitreous humor, 2-part choroid, lens, and cornea. 18 numbered
key . Size 7" x 4" x 4"



AM19. **IMPORTED EYEBALL WITH ORBIT** - Enlarged about 4-times,
this 8-part eyeball model shows the 6 muscles of the eye as it sits in the
orbit. 8-parts include: upper part of eyeball, lateral and superior rectus
muscles, 2-part choroid, retina with vitreous humor, lens, cornea, and orbit
with lower eyeball. 18 numbered parts correspond to key. Mounted on base, made of fiber glass. Size:
10"x13"x9.1/2"

AM20. EAR LARGE SIZE showing External, Middle and Inner Ear Dissectable in four parts.

AM21. EAR SAGITTAL SECTION extra large and detailed model : all major structures the Temporal Bone and A
Section of the Auditory Canals are removable.

AM22. EAR six time enlarged made from Venyl Rubber. (Natural look.)



AM-25

AM23. TONSILS Pharyngeal, Palatine & Lingual Tonsils.

AM24. TEETH WITH TONGUE.

AM 24A **IMPORTED GIANT MOLAR**

AM25. **IMPORTED UPPER AND LOWER JAW** - A depiction of the upper
and lower jaws shows a cross-section of the teeth and jaw. The 2-piece
model opens to reveal the palate and the masticating surface of the teeth.
Key indicates the 18 numbered features. Finely painted fiberglass. Mounted
on stand Size: 8"x10"

- AM25A IMPORTED Life size Brushing Tooth
- AM25D DENTITION DEVELOPMENT (UPPER & LOWER JAWS)
(New Born, 5 Year Old, 9 Year Old, Adult)
- AM25B IMPORTED Giant Brushing Tooth: Demonstrate the correct way to brush your teeth and gums. Includes a giant size, soft nylon bristle toothbrush.
Size : 6" from molar to molar. Tooth brush 14.5" Long
- AM25C IMPORTED Giant Brushing Tooth With all detachable Incisor, Cuspid, Molar & Bicuspid
- AM26. PITUITARY GLAND Hypothalamus.
- AM27. THYROID & PARATHYROID GLAND.
- AM28. NASAL CAVITY & PHARYNX Sagittal section viewed from medial side.
- AM29. LARYNX Anterior View, Posterior View, Slide View cut away side view and Sagittal Section.
- AM29A **IMPORTED** LARYNX
- AM30. LARYNX Deep side view.
- AM31. PHARYNX Posterior View.
- AM32. PHARYNX & LARYNX Sagittal Section.
- AM33. PHARYNX & LARYNX Deep side view.
- AM34. LUNGS section with respiratory tract, Bronchial tubes, Arteries & Veins.
- AM35. IMPORTED HUMAN LUNGS WITH HEART - About 3-times life size. The 3-dimensional lungs and heart are shown in cross-section and the 2-piece larynx divides in half and can be removed for inspection. 33 numbered parts with identifying key. Mounted on a baseboard approximately 20"x18" Made of fiberglass.
- AM36. THE RESPIRATORY SYSTEM.
- AM37. LIVER enlarged showing Gall Bladder.
- AM38. LIVER with Gall Bladder & Pancreas.
- AM39. LIVER : showing blood supply.
- AM40. PANCREAS enlarged
- AM41. STOMACH enlarged with duodenum section showing details.
- AM42. SPLEEN Normal size with details.
- AM43. GALL BLADDER, PANCREAS & DUODENUM
- AM44. INTESTINE showing blood supply.
- AM45. INTESTINE Large and Small.
- AM46. RECTUM (ANAL CANAL).



AM-29



- AM47. DUCT SYSTEM
- AM48. THE DIGESTIVE SYSTEM.
- AM49. HEART Enlarged separable in 4 parts.
- AM49 C. GIANT HEART Enlarged seperable in 4 parts.
- AM50. CIRCULATORY SYSTEM
- AM51. THE HEPATIC PORTAL SYSTEM.

AM-48

AM52. SCHEMATIC CIRCULATORY SYSTEM.

AM53. FETALCIRCULATION

AM54. ARTERIES OF THE NECK & HEAD, major braches of the right common carotid and right sub clavian arteries.

AM55. AN ANTERIOR VIEW OF THE MAJOR ARTERIES OF THE UPPER EXTREMITY.

AM56. ARTERIES OF THE PELVIC REGION.

AM57. ARTERIES OF THE RIGHT LOWER EXTREMITY. (Anterior and Posterior View)

Am58. URINARY SYSTEM with Kidneys and Urinary Bladder.

Am59. KIDNEY enlarged showing kidney insection, Nephron & glomerulus on board.

AM60. URINARY BLADDER Sectioned.

AM61. TESTIS Cross Section.

AM62. PENIS CROSS SECTION Anterior view (Oblique Section)

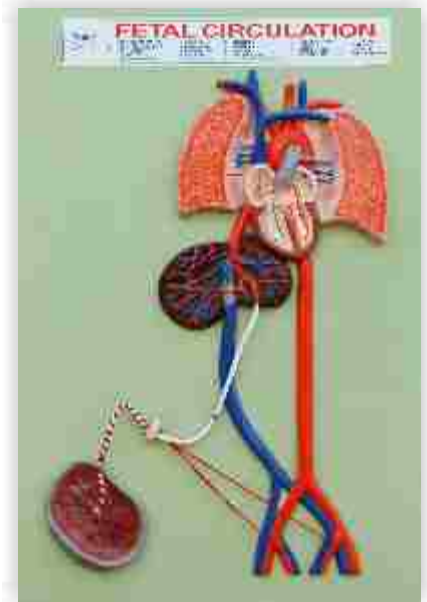
Am63. STRUCTURE OF THE PENIS Showing the attachment, blood and Nerve supply And the arrangement of the erectile tissue.

AM64. FEMALE URETHRA Longitudinal Section.

AM64A. HERNIA

AM65. MALE REPRODUCTIVE SYSTEM-organs. A Sagittal view

AM65A. MALE PELVIC SECTION A finely painted cross-section of the male pelvis showing the internal and external reproductive organs, bladder, and prostate. 2 removable parts expose interior structures. 26 numbered structures correspond to key; Life size mounted on board, made of fibre glass, Size : 13" x 14" x 5".



AM-53

AM66. FEMALE REPRODUCTIVE SYSTEM organs A Sagittal view

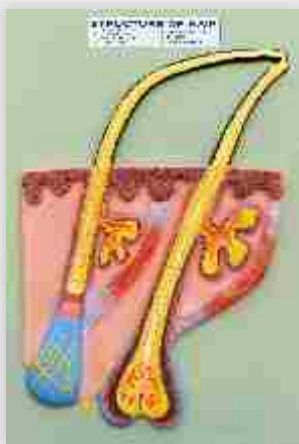
AM66A. FEMALE PELVIC SECTION brilliantly painted life-size cross-section of female pelvic region showing reproductive organs, bladder and rectum. One removable part, 26 numbered structures correspond to key; Life size mounted on board, made of fibre glass, Size : 13" x 14" x 5".



AM-29

AM67. THE SIZE AND THE POSITION OF THE UTERUS IN A FULL TERM PREGNANCY Sagittal section.

AM68. UTERUS Sagittal section with Fallopian tubes. enlarged.



AM-75

AM68A. FEMALE PERINEUM

AM68B. UTERUS ENLARGE

AM68C. FEMALE REPRODUCTIVE SYSTEM

AM69. VASCULAR SUPPLY TO THE UTERUS.

Am70. STRUCTURE OF THE BREAST & MAMMARY GLANDS.

AM71. THE SKIN 100 Times enlarged.

Am72. THE SKIN Three Dimensional block model greatly enlarged (100 times) cross section view showing three layers and a close view of a hair follicle, sweat gland, fatty tissue and more front and side view mounted on

AM73. TYPES OF SKIN LESIONS Macule, Papule, Nodule, Wheel, Vesicle Intra or sub-epidermal blister pustule cyst. fissure & Ulcer.

AM74. BONE STRUCTURE Cross Section.

AM75. HAIR STRUCTURE Cross Section.

AM76 Ovum

AM77 Spermatozoa

AM 77A Fertilization

AM78. SPERMATOGENESIS

Am79. UTERUS SHOWING FERTILIZATION

AM81A. PLACENTA SHOWING BLOOD SUPPLY MATERNAL & FETAL

AM 84 STAGES OF LABOUR SET OF 3

AM 86 AVBIRNAKUTUES OF BREECH DELICERY SET OF 5

AM 87 MUTIPLE PREGNANCY SET OF 6



AM-68

! Ask for Exclusive Range of Anatomy Charts !

ANATOMY CHARTS

Size : 20"X26" Laminated and attached with durable strips

OR

Laminated and Framed on Board

All Charts Also Available Size: 30"x40" Laminated & Fitted with Plastic Rollers

- 1. Muscular System, 2. The Skeletal System, 3. The Nervous System, 4. The Autonomic Nervous System
- 5. The Vascular System, 6. The Lymphatic System, 7. The Respiratory System, 8. The Female Reproductive System
- 9. The Male Reproductive System, 10. The Digestive System, 11. The Urinary Tract, 12. The Endocrine System
- 13. The Brain, 14. The Heart, 15. The Eye, 16. The Liver, 17. The Kidney, 18. The Spinal Nerves, 19. The Hair
- 20. Shoulder & Elbow, 21. Hand & Wrist (Ligaments & Construction), 22. Hip & Knee, 23. Foot & Ankle
- 24. The Vertebral Column, 25. The Skull, 26. Head & Neck, 27. The Prostate, 28. The Skin, 29. Anatomy of the Heart
- 30. The Ear, 31. Pharynx & larynx, 32. Ligaments of The Joints, 33. Bone Anatomy, 34. Portal System
- 35. Fetal Circulatory, 36. Heart Condition, 37. Internal organs 38. Critical Periods In Human Developments

Identification of An Individual

- Ch 783. Morphological Features of the Three Primary Races Caucasians, Mongolians & Negroes
- Ch 784. Important Data For Identification of Person
- Ch 785. Determination of Sex From Physical / Morphological Features (primary & Secondary Sex Features)
- Ch 786. Ages of Eruption of Teeth
- Ch 787. Difference Between Temporary & Permanent Teeth
- Ch 788. Sex Difference Features In Skull
- Ch 790. Sex Difference Features In Mandible
- Ch 791. Sex Difference Features In Sacrum
- Ch 792. Sex Differentiating Features In Articulated Pelvis
- Ch 793. Difference Between Mandible In Infancy, Adult & old Age
- Ch 794. Difference Between Human & Animal Hair
- Ch 795. Estimation of Age

For more Detail visit our website www.dbios.org

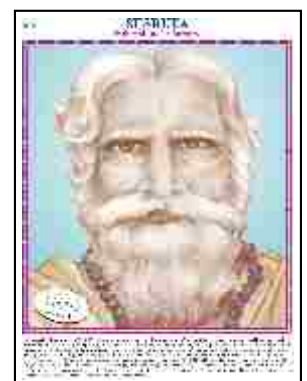
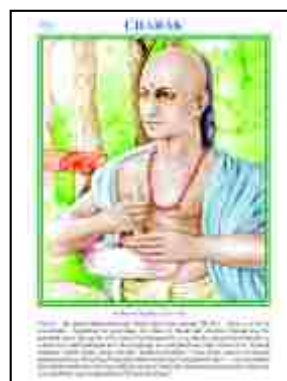
diseases & disorders charts Available 50 Charts

- 1. Thyroid Diseases, 2. Migraines & Headaches, 3. Understanding Stroke 4. Understanding-Epilepsy
- 5. Understanding Asthma, 6. Understanding Hepatitis 7. Understanding Diabetes
- 8. Understanding Breast Disease, 9. Understanding Menopause, 10. Understanding Osteoporosis
- 11. Understanding Allergies, 12. Understanding Skin Cancer, 13. Understanding Cancer etc.....

Embryology charts (2001 to 2041) 41 Charts

Histology charts 150 Charts

SCIENTIST/MEDICAL PROFESSIONAL PORTRAITS 50 Charts



Anatomy Models & Skeletons

IMP- 126 IMPORTED SKELETON (USA)



Male

IMP- 126 F IMPORTED SKELETON (USA)



Female

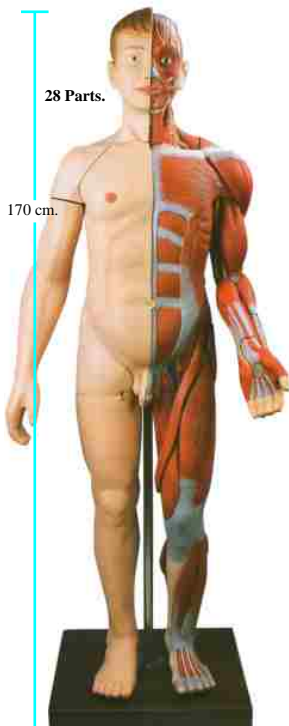


All Skeleton Parts are Near to Original

Full skeleton complete (Loose Bones)

- Skull With Mandible 3parts
- Ribs (L&R)
- Sternum
- Humerus, Radius, Ulna (Left)
- Humerus, Radius, Ulna (Right)
- Pelvis (L&R)
- Sacrum
- Femur, Tibia, Fibula (Left)
- Femur, Tibia, Fibula (Right)
- Vertebral Column (Disarticulated)
- Cervical Vertebrae (Set of 7)
- Thoracic Vertebrae (Set of 12)
- Lumbar Vertebrae (Set of 5)
- Hand Disarticulated (L&R)
- Foot Disarticulated (L&R)

IMP 2 Human Body Muscles with Internal organs



IMP- 127 IMPORTED MR. SUPERSKELTON (USA)



IMP 260 Comparative Study of Skulls, Set of 5
Rs. 36000/-



Joins



IMP 3 Transparent Torso With Internal Organs



A-88 Imported FUNCTIONAL SHOULDER JOINT (RIGHT)



A-89 Imported FUNCTIONAL HIP JOINT (RIGHT)



A-90 Imported FUNCTIONAL ELBOW JOINT (RIGHT)



A-86 Imported ADULT LEG BONE WITH THREE JOINTS & LIGAMENTS Without Stand



A-91 Imported FUNCTIONAL WRIST JOINT (RIGHT)



A-92 Imported FUNCTIONAL ANKLE JOINT (RIGHT)



A-93 Imported FUNCTIONAL KNEE JOINT (RIGHT)



IMP126A Fetus Skeleton Model



A-87 Imported ADULT ARM BONE WITH THREE JOINTS & LIGAMENTS Without Stand



IMP 255 Deluxe Demonstration Skull, 10 - parts



IMP 256 System Skull - Bony Skull, 6-part



IMP 257 Classic Skull, 3-part



IMP. 131 IMPORTED VERTEBRAL COLUMN WITH FEMORAL HEADS & STAND :



IMP 251 Skull model decomposable into ten parts with anatomical parts highlighted through colour.



IMP 252 Skull decomposable into ten parts with anatomical parts highlighted through colours.



IMP 258 Classic Skull, with opened Lower jaw, 3-part



IMP287 MICRO anatomy
Artery and Vein

IMP 282 MICRO
Anatomy Liver

IMP 284 MICRO Anatomy
Kidney

IMP 286 MICRO Anatomy
Digestive System

IMP281 MICRO anatomy
Bone Structure



A rare collection



A rare collection



A rare collection



A rare collection

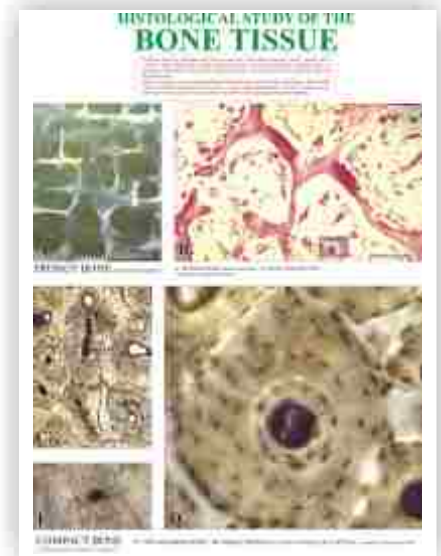


A rare collection

HISTOLOGY CHARTS on board

Size 18"X24"

- W 1 FEMALE REPRODUCTION
- W 2 MALE REPRODUCTION
- W 3 DIGESTIVE SYSTEM
- W 4 URINARY SYSTEM
- W 5 INTEGUMENTARY SYSTEM
- W 6 RESPIRATORY SYSTEM
- W 7 EPITHELIAL TISSUE WALL
- W 8 NERVOUS TISSUE
- W 9 BONE TISSUE
- W 10 CONNECTIVE TISSUE
- W 11 BLOOD CELL
- W 12 MUSCLE TISSUE
- W 26 HUMAN MICRO ANATOMY POSTER (27"X38")



W 9



German Imported Human Microscopic Histology Slides (Set of 62)



- | | | |
|-----------------------------|---|-----------------------|
| HHS01 Adipose Tissue | HHS22 Tongue filli form and fungi from papillae | HHS43 Kidney |
| HHS02 Hyaline Cartilage | HHS23 Tongue circumvellate papillae | HHS44 Ureter |
| HHS03 Elastic Cartilage | HHS24 Oesophagus | HHS45 Urinary bladder |
| HHS04 White Fibro Cartilage | HHS25 Stomach-fundus | HHS46 Testis |
| HHS05 Bone T.S. | HHS26 Stomach-pylorus | HHS47 epididymis |
| HHS06 Bone L.S. | HHS27 Duodenum | HHS48 Vas deferens |
| HHS07 Skeletal Muscle | HHS28 Jejunum | HHS49 Prostate Gland |
| HHS08 Smooth Muscle | HHS29 Ileum | HHS50 Ovary |
| HHS09 Cardiac Muscle | HHS30 Large Intestine | HHS51 Uterus |
| HHS10 Peripheral Nerve T.S. | HHS31 Appendix | HHS52 Uterine tube |
| HHS11 Peripheral Nerve L.S. | HHS32 Liver | HHS53 Thin Skin |
| HHS12 Sensory Ganglion | HHS33 Gall Bladder | HHS54 Thick Skin |
| HHS13 Dorsal root ganglion | HHS34 Pancreas | HHS55 Cornea |
| HHS14 Elastic artery | HHS35 Salivary Gland-serus | HHS56 Retina |
| HHS15 Muscular Artery | HHS 36 Salivary Gland-mixed | HHS57 Spinal Cord |
| HHS16 Large vein | HHS37 Salivary Gland-mucus | HHS58 Cerebrum |
| HHS17 Small vein | HHS38 Trachea | HHS59 Cerebellum |
| HHS18 Lymph node | HHS39 Lung | HHS60 Placenta |
| HHS19 Thymus | HHS40 Thyroid with para thyroid | HHS61 Umbilical Cord |
| HHS20 Platine tonsil | HHS41 Pitutary gland | HHS62 Mammary Gland |
| HHS21 Spleen | HHS42 Adrenal Gland | |



USA Imported Human Microscopic Histology Slides (Set of 100)



- | | | |
|---|--|--|
| C01 Simple squamous Epithelium sec. | C34 Stomach fundic portion sec. | C67 Fallopian Tube sec |
| C02 Simple Cuboidal Epithelium sec. | C35 Stomach Cardiac Region sec. | C68 Penis c.s |
| C03 Simple Columna Epithelium sec. | C36 Stomach Pyloric Region sec. | C69 Cervix sec. |
| C04 Columna Pseudo stratified ciliated epithelium | C37 Small Intestine c.s | C70 Thyroid Gland sec |
| C05 Stratified squamous Epithelium sec | C38 Duodenum sec. | C71 Thymus Gland sec |
| C06 Transitional Epithelium sec | C39 Jejunum sec. | C72 Mammary gland sec |
| C07 Ciliated Epithelium | C40 Ileum c.s. show villi and goblet cells | C73 Adrenal Gland sec |
| C08 Epidermis from human mouth | C41 Appendix sec. | C74 Lymph Node sec |
| C09 Glandular Epithelium sec | C42 Large Intestine sec | C75 Salivary gland c.s. |
| C10 Loose Connective Tissue w.m | C43 Colon sec. | C76 Cerebrum sec |
| C11 Dense Connective Tissue w.m | C44 Rectum sec. | C77 Cerebellum sec |
| C12 Adipose Tissues sec. | C45 Pancreas sec. | C78 Pituitary gland c.s. |
| C13 Hyaline Cartilage sec. | C46 Spleen sec. | C79 Tendon teased c.s. |
| C14 Elastic Cartilage sec. | C47 Liver sec. | C80 Eye entail sec |
| C15 Fibro Cartilage sec. | C48 Gall Bladder sec | C81 Eyeball sec |
| C16 Human Chromosome Normal Female w.m | C49 Fat layer | C82 Human Skin sec. show Thick Cornified Layer |
| C17 Human Chromosome Normal Male w.m | C50 Fibroblast | C83 Human Skin sec. Through sweat Gland |
| C18 Medulla oblongata sec | C51 Nerve cells | C84 Human Skin sec. Through Hair Follicle |
| C19 Red marrow smear | C52 Bronchiolus | C85 White fibrous tissue |
| C20 Smooth Muscle Teased Preparation w.m | C53 Lung sec | C86 Mucous tissue, umbilical cord |
| C21 Blood smear | C54 Artery sec | C87 Decalcified bone c.s. |
| C22 Hair | C55 Vein sec | C88 Infant developing bone section |
| C23 Smooth Muscle l.s and c.s | C56 Large artery sec | C89 Developing membrane bone |
| C24 Skeletal Muscle l.s and c.s | C57 Large vein sec | C90 Muscle-tendon junction l.s. |
| C25 Cardiac Muscle sec | C58 Heart l.s. whole | C91 Muscle spindle |
| C26 Spinal Cord l.s and c.s | C59 Kidney l.s | C92 Nerve bundle |
| C27 Sciatic nerve l.s. | C60 Kidney with Blood Vessel Injected sec. | C93 Sympathetic ganglion |
| C28 Motor neuron w.m | C61 Ureter sec. | C94 Motor cortex section |
| C29 Motor Nerve Endings w.m | C62 Ovary sec. | C95 Sensor cortex |
| C30 Tongue l.s. show filiform papilla | C63 Placenta Human sec. | C96 Cerebellar cortex |
| C31 Esophagus sec. | C64 Human Sperm smear | C97 Palatine tonsil |
| C32 Trachea sec. | C65 Epididymis sec | C98 Thin skin from human palm section |
| C33 Stomach sec. | C66 Prostate Gland Human sec. | C99 Finger nail section |
| | | C100 Stomach -duodenal junction l.s. |