

Size 50x 65 cms. Laminated and Attached with Durable Strips OR Rs. 800/-
Size 50x 65 cms. Laminated & Framed on NU-Wood Board Rs. 1600/-

ANIMAL HUSBANDARY (46) Charts

- DAH 01 Different Breeds of Cows
- DAH 02 Different Breeds of Buffalo
- DAH 03 Body Parts of Cow
- DAH 04 Bull Reproductive System
- DAH 05 Cow Reproductive System
- DAH 06 Ox Skeleton System
- DAH 07 Methods of Milking & Cross Section of Cow's Udder
- DAH 08 Oestrous cycle for different categories of animals
- DAH 09 Vaccinations schedule for dairy animals
- DAH 10 Dairy cattle shed map for 10 buffaloes/cows & their calves
- DAH 11 Housing System For Animals Head To Head
- DAH 12 Housing System For Animals Tail To Tail
- DAH 13 Composition of concentrate mixture according to level of milk production
- DAH 14 Composition of mineral mixture (without salt) for dairy animals
- DAH 15 Food Habits of Animals
- DAH 16 Appliances of Handling Animals
- DAH 17 Casting of Farm Animals
- DAH 18 Methods of Identification
- DAH 19 Disbudding & Dehorning
- DAH 20 Parasites of Cattle
- DAH 25 Different Breeds of Sheep
- DAH 26 Body Parts of Sheep
- DAH 27 Sheep Digestive System
- DAH 33 Different Breeds of Goat
- DAH 34 Goat Skeleton System
- DAH 35 Stomach of Goat
- DAH 40 Composition of rations for different classes of pigs
- DAH 41 Different Breeds of Pig
- DAH 42 Body Parts of Pig
- DAH 43 Pig Digestive System
- DAH 48 Horse Skeleton System
- DAH 49 Different Types of Larva
- DAH 50 L.H. Silkworm
- DAH 51 Fish Anatomy

CATTLE DISEASE

- Dvet 101 Cattel Anthrax
- Dvet 102 Cattel Black quarter (black-leg)
- Dvet 103 Animals Foot and mouth disease
- Dvet 104 Rabies (Mad dog disease)
- Dvet 105 Blue tongue
- Dvet 106 Sheep Pox
- Dvet 107 Animal Tetanus
- Dvet 108 Animal Johne's Disease
- Dvet 109 Cattle Mastitis
- Dvet 110 Piglet diarrhea or scour
- Dvet 111 Bovine babesiosis (tick fever)
- Dvet 112 Lumpy Skin Disease

Agriculture (45) Charts

- CH 530 Soil Profile
- CH 530a Soil Testing
- DAG 01 Types of Soil
- DAG 02 Different Implements or Cultivation of Field
- DAG 03 Irrigation System
- DAG 04 Meteorological Instrument
- DAG 05 Surveying and Leveling Instrument
- DAG 06 Tools and Implements for Horticultural Crops
- DAG 07 Cereal, Pulses and Oil Seed Crops
- DAG 08 Crops Rabi, Kharif And Summer
- DAG 09 Different Propagation Method
- DAG 10 Mendelian Genetics Monohybrid and Dihybrid Cross
- DAG 11 Plant Deficiency (Macro & Micro-Nutrients)

PLANT PATHOLOGY

- DAG 14 Plant Diseases
- DAG 15 Yellow Mosaic of Beans
- DAG 16 Angular Leaf Spot of Cotton
- DAG 17 Black Spot of Rose
- DAG 18 Citrus Canker
- DAG 19 Downy Mildew of Grapes
- DAG 20 Leaf Blight of Potato
- DAG 21 Little Leaf of Tomato
- DAG 22 Mango Disease
- DAG 23 Oily Spot of Pomegranate
- DAG 24 Okra Pickles by Telethon
- DAG 25 Papaya Curl Leaves
- DAG 26 Red Rust of Wheat
- DAG 27 Rust of Wheat
- DAG 28 Sandal Spikes
- DAG 29 Tikka Disease of Groundnut
- DAG 30 Tomato Curl Leaves
- DAG 31 Blast of Rice
- DAG 32 Coffee Rust
- DAG 33 Grain Smut of Sorghum
- DAG 34 Koleroga
- DAG 35 Red Rot of Sugarcane

FRUITS

- DAG 40 Fruits, Vegetables and Flower Crops
- DAG 41 Major Exports Fruits & Vegetable
- DAG 42 Major Exotic Fruits & Vegetable
- DAG 43 Different Varieties of Mangos
- DAG 44 Different Varieties of Bananas
- DAG 45 Different Varieties of Chikkoo
- DAG 46 Type of Pruning in Fruits Crops
- DAG 47 Fruit Preservation Methods
- DAG 48 Recipe of Jam, Jellies, Marmalade
- DAG 49 Recipe of Ketchup
- DAG 50 Recipe of Pickles
- DAG 51 Food preservation



Dvet 109



DAG 09

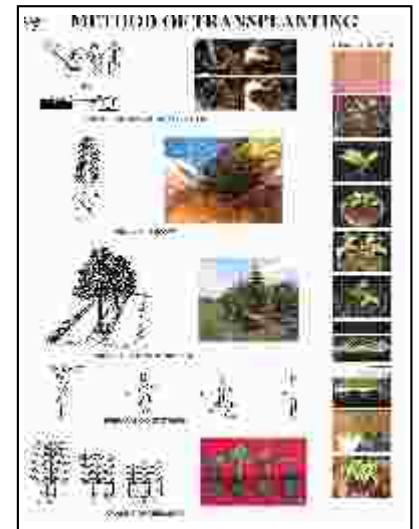
FORESTRY (46) charts

Size 50x 65 cms. Laminated and Attached with Durable Strips OR Rs. 800/-
Size 50x 65 cms. Laminated & Framed on NU-Wood Board Rs. 1600/-

- DF 1 Silviculture and Forestry
- DF 2 Seed year
- DF 3 Patterns of Planting
- DF 4 Forest Thinning
- DF 5 Distribution of Forest Cover
- DF 6 Important Light Demander, Shade Bearer and Demanding Species
- DF 7 Nutrient Uptake and Release
- DF 8 Vegetation in Eastern and Himalayas
- DF 9 Climate and Forest Types in India
- DF 10 Forms of Crown
- DF 11 Average Height Growth in Some Species According to Quality
- DF 12 Site Quality And Diameter at Different Age In Some Species
- DF 13 Tree Classification In Regular Forests
- DF 14 Causes of Primary Succession
- DF 15 Champion And Seth's Classification of Forests of India
- DF 16 Choice of Species:- Site Factors
- DF 17 Purpose of Plantation : Sport Goods
- DF 18 Fast Growing Indigenous Species
- DF 19 Fast Grown Exotic Species

- DF 20 Nursery Bed
- DF 21 Method of Transplanting
- DF 22 Calendar of Nursery Operation
- DF 23 Methods of Soil Working
- DF 24 Seed Rate
- DF 25 Method of Planting
- DF 26 Spacing
- DF 27 Silviculture Systems
- DF 28 Hand Tools Used in Carpentry
- DF 29 Types of Chisels
- DF 30 Types of Saws-I
- DF 31 Types of Saws-II
- DF 32 Carpentry Joints-I
- DF 33 Carpentry Joints-II
- DF 34 Gross Features of Wood
- DF 35 Defects In Timber
- DF 36 Fungal Defects In Wood
- DF 37 Timber Decay
- DF 38 Types of Axes
- DF 39 Logging Instruments
- DF 40 Methods of Sawing Logs
- DF 41 Types of Leaf Margin

- DF 42 Types of Leaf Apex
- DF 43 Types of Leaf Base
- DF 44 Inversion Heterozygote
- DF 45 Translocation
- DF 46 Anther & Pollen Culture



DF 21

Poultry (28) Charts

Size 50x 65 cms. Laminated and Attached with Durable Strips OR Rs. 800/-
Size 50x 65 cms. Laminated & Framed on NU-Wood Board Rs. 1600/-

- Dpoul 01 Composition of rations for layers at different age groups
- Dpoul 02 Composition of Broiler Ration
- Dpoul 03 Food Habits of Birds
- Dpoul 04 Poultry Farm Equipments
- Dpoul 05 Poultry House
- Dpoul 06 Parts of Chicken & their Combs
- Dpoul 07 Body Parts of Chicken
- Dpoul 08 Types of Chick Combs
- Dpoul 09 Body Parts of Duck & Turkey
- Dpoul 10 Chick Embryo Development
- Dpoul 11 Stages of Bird Growth

- Dpoul 12 Types of Eggs
- Dpoul 13 Different Breeds of Chick
- Dpoul 14 Chick Circulatory System
- Dpoul 15 Chick Digestive System
- Dpoul 16 Chick Reproductive System
- Dpoul 17 Chick Urinogenital System Female
- Dpoul 18 Chick Urinogenital System Male
- Dpoul 19 Aseel
- Dpoul 20 Australorp
- Dpoul 21 Bramhas
- Dpoul 22 Giriraj
- Dpoul 23 Minorca
- Dpoul 24 Plymouth Rock

- Dpoul 25 Rhode Island Red
- Dpoul 26 Vanraj
- Dpoul 27 White Leg Horn
- Dpoul 28 Chick Nervous System



Dpoul 13

Size 50x 65 cms. Laminated and Attached with Durable Strips OR Rs. 800/-
Size 50x 65 cms. Laminated & Framed on NU-Wood Board Rs. 1600/-

THE DOG

- Dvet 11 Different Breeds of Dog
- Dvet 12 Body parts of Dog
- Dvet 13 Body regions of Dog
- Dvet 14 Skeleton system of Dog
- Dvet 15 Muscles of Dog
- Dvet 16 Deep cervical muscles of Dog
- Dvet 17 Paws of Dog
- Dvet 18 Head of Dog
- Dvet 19 Eye of Dog
- Dvet 20 Nose of Dog
- Dvet 21 Ear of Dog
- Dvet 22 Mouth of Dog
- Dvet 23 Digestive organs of Dog
- Dvet 24 Thoracic, abdominal and pelvic viscera of Dog
- Dvet 25 Body cavities and Hip joint of Dog
- Dvet 26 Location of major endocrine organs
- Dvet 27 Reproductive organs of the dog
- Dvet 28 Circulatory System of Dog
- Dvet 29 Lymph nodes and vessels of Dog
- Dvet 30 Nervous System of Dog
- Dvet 31 Brain of Dog

THE CAT

- Dvet 36 Different Breeds of Cat
- Dvet 37 Body regions of Cat
- Dvet 38 Skeleton system of Cat
- Dvet 39 Muscles of Cat
- Dvet 40 Deep cervical muscles of the Cat
- Dvet 41 Head of Cat
- Dvet 42 Mouth of Cat
- Dvet 43 Ear of Cat
- Dvet 44 Eye of Cat
- Dvet 45 Digestive organs of Cat
- Dvet 46 Paw of Cat
- Dvet 47 Thoracic, abdominal and pelvic viscera of Cat
- Dvet 48 Reproductive organs of the Cat
- Dvet 49 Circulatory System of Cat
- Dvet 50 Endocrine organs of Cat
- Dvet 51 Nervous System of Cat
- Dvet 52 Brain of Cat

THE RABBIT

- Dvet 56 Body parts of Rabbit
- Dvet 57 Skeleton system of Rabbit
- Dvet 58 Muscles of the Rabbit
- Dvet 59 Oral cavity, tongue, pharynx and esophagus of Rabbit
- Dvet 60 Thoracic, abdominal and pelvic viscera (in situ) of the Rabbit
- Dvet 61 Reproductive organs of the Rabbit
- Dvet 62 Endocrine organs and lymph nodes
- Dvet 63 Nervous system of Rabbit
- Dvet 64 Brain of Rabbit

The RAT

- Dvet 68 Body parts of Rat
- Dvet 69 Skeleton System of Rat
- Dvet 70 Muscles of the Rat
- Dvet 71 Head of Rat
- Dvet 72 Digestive organs of Rat

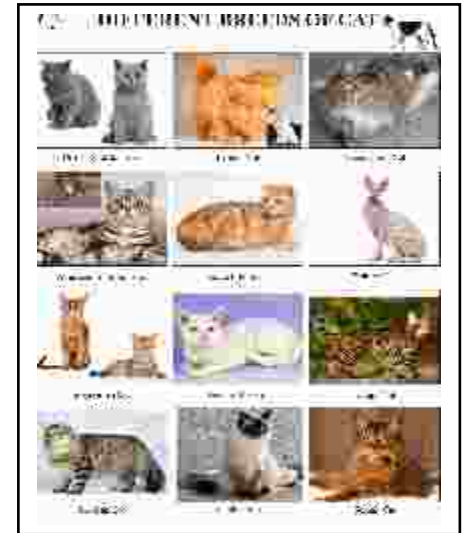
- Dvet 73 Thoracic, abdominal and pelvic viscera of Rat
- Dvet 74 Reproductive organs of the Rat
- Dvet 75 Nervous system of Rat
- Dvet 76 Brain of Rat

THE GUINEA PIG

- Dvet 81 Body parts of Guinea Pig
- Dvet 82 Skeleton system of Guinea Pig
- Dvet 83 Muscles of the Guinea Pig
- Dvet 84 Head of Guinea Pig
- Dvet 85 Digestive organs of Guinea Pig
- Dvet 86 Thoracic, abdominal and pelvic viscera of Guinea Pig
- Dvet 87 Reproductive organs of Guinea Pig
- Dvet 88 Nervous system of Guinea Pig
- Dvet 89 Brain of Guinea Pig



Dvet 11



Dvet 36

Specimen Charts -26Charts

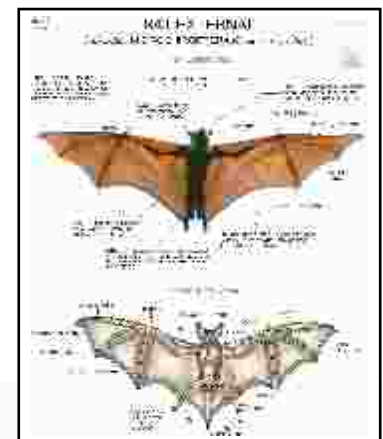
Charts size 75x100cms. On Black / White Raxine

As you are aware these days, Specimen are banned. So Dbios introduces new chart series for specimen especially Banned

Rs. 800/-

- | | |
|--------------------------------------|---|
| CH 334 Earthworm External Characters | CH 395 Starfish (Asterias) Ext.characters & Anatomy |
| CH 343 Leech External | CH 401 Scoliodon External Characters |
| CH 344 Neries | CH 412 Labeo rohita External Characters |
| CH 356 Housefly L.H | CH 415 Amphioxus External Characters |
| CH 359 Honey Bee L.H. | CH 422B Herdmania External |
| CH 360 Silkworm L.H. | CH 425 Frog External Characters |
| CH 361 Grasshopper L.H. | CH 450 Chamaleon |
| CH 363 Cockroach External Character | CH 461 Snake Types |
| CH 370 Prawn External Anatomy | CH 462 Lizard External & Internal |
| CH 376 Scorpion External character | CH 484 Bat |
| CH 377 Spider | CH 527 Classification Chordates |
| CH 378 Millepede | CH 485 Rat External Characters |
| CH 380 Pila External Characters | |
| CH 387 Unio External Characters | |

New Addition


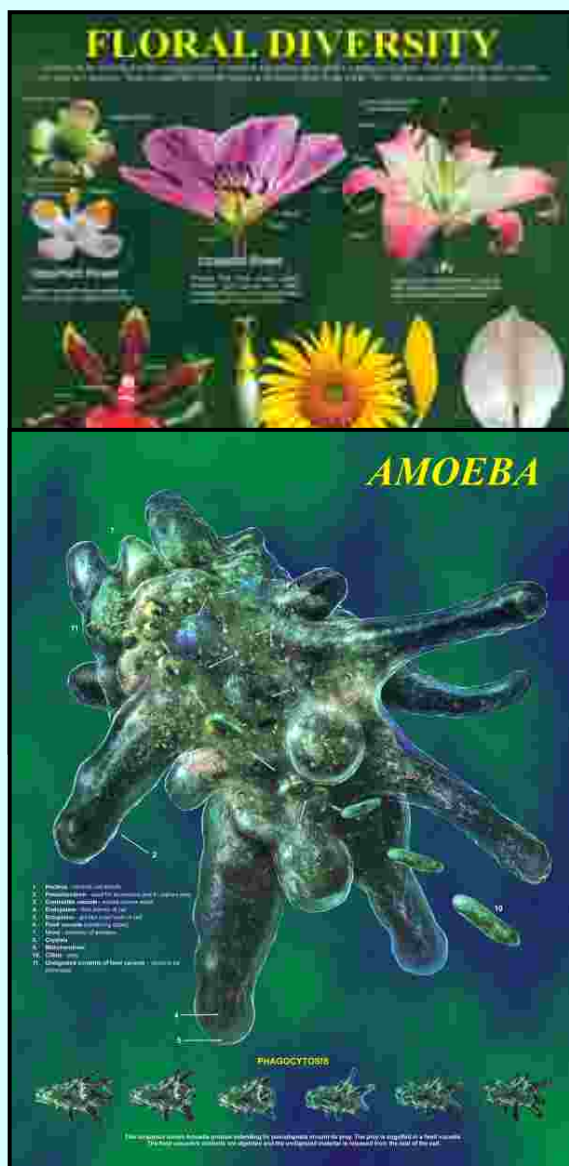


CH 484 Bat


Impressive, Stunning, Valuable & the best 48 Charts as per International Standards

Laminated & Framed on Board Size 20x26"

FLORAL DIVERSITY
FLESHY FRUITS
GENETICS -I
GENETICS II
GENETICS -III
IMMUNE -I
IMMUNE -II
IMMUNE -III
VOLVOX
OSMOSIS
PH SCALE
PHOTOSYNTHESIS
MICROSCOPE
MOSS LIFE HISTORY
CELL WALL
CELLS (PROKARYOTIC CELLS)
BACTERIA
BLOOD CELL
LEAF HISTORY
STEM HISTORY
LILY LIFE HISTORY
FERN LIFE HISTORY
EUGLENA

BACTERIAL CELL
BLOOD TYPING
PARAMECIUM
PINE LIFE HISTORY
DROSOPHILA
PORIFERA
MOLLUSCA
ECHINODERMATA
ARTHROPODA
PLATYHELMINTHES
PONDS-I
PONDS-II
PONDS-III
NEMATODE
ANNELIDA
CHORDATA
CNIDARIA
DRY FRUIT
MITOSIS
MEIOSIS
PLANT CELL
ANIMAL CELL
CELL MEMBRANE



Terms & Conditions :

- GST** GST extra as per Govt. Rules on Models, Slides & Cds
Rates are Net Ex-Godown Ambala Cantt.
- Payment Mode** You can Deposit local cheques in favour of "Dbios Charts" in our
HDFC Bank Account No 5920 9729010431 RTGS - HDFC0000131 or
or
Send the DD of any nationalised bank in the favour of "Dbios Charts" payable at Ambala Cantt.
- Delivery** Your order is executed with in 2-3 days.

CERTIFICATE

We hereby, certify that we are the sole producers of Dbios products, which are covered under twelve months guarantee against any manufacturing defect. Prices quoted may be treated as our specific quotations as & when needed.

Dbios DBIOS CHARTS

A Unit of Desh Biological

2496, Timber Market , Ambala Cantt-133001, HARYANA (INDIA)

Mob. 09896662901, 09729010431 Ph. : 0171- 4007531

Website : www.enggcharts.org, www.dbios.org e-mail : desh@dbios.org, deshbiological@gmail.com