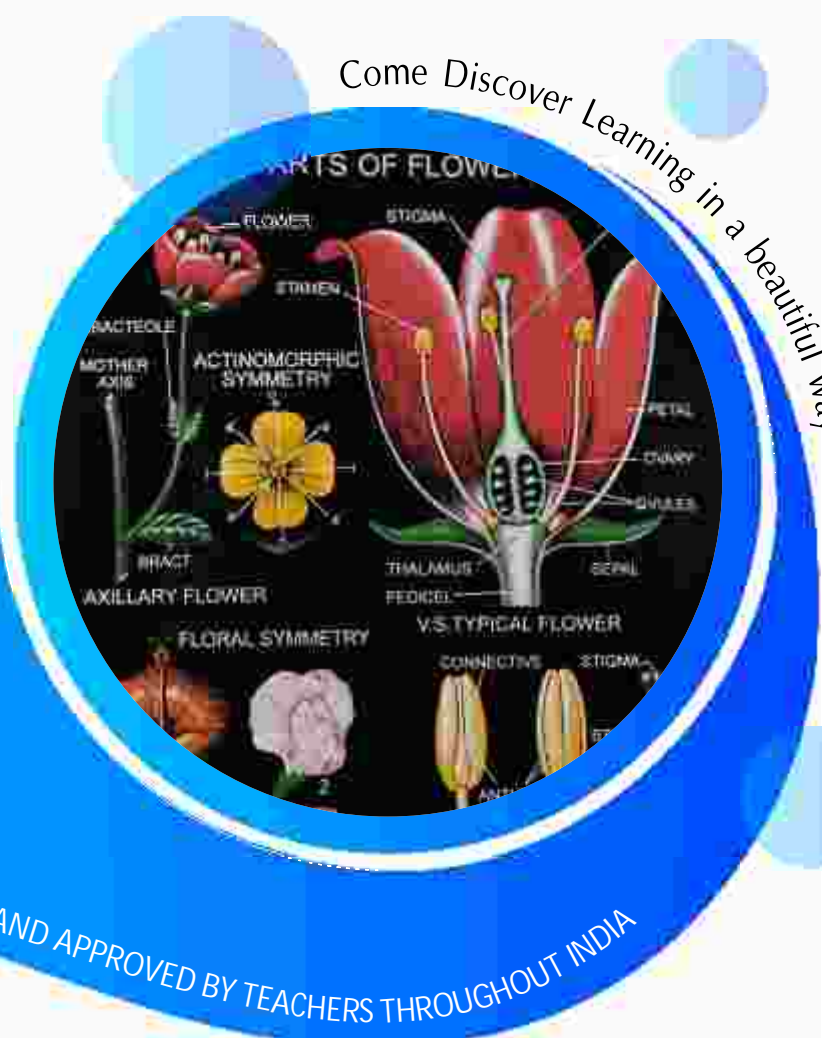


Come Discover Learning in a beautiful way

List No. 1
w.e.f. May. 01, 2026

CHARTS & MODELS

for Schools - Universities



REXINE CHARTS LOVED BY STUDENTS AND APPROVED BY TEACHERS THROUGHOUT INDIA

- Computer Charts 41
- Psychology Charts 51
- Human Charts 59
- Biology Charts 111
- Bio-Chemistry Charts 37
- Bio-Technology Charts 46
- Botany Charts 198
- Zoology Charts 235
- Pharmacy Charts 95
- Biology Models 75
- Physics Charts 120
- Chemistry Charts 97
- Scientit Charts 250
- Geography Charts 31
- Math & English Charts 46
- Music & Sports Charts 16
- Forestry Charts 46
- Poultry Charts 28
- Animal Husbandary Charts 50
- Agriculture Charts 50
- Psychology Charts 52
- Computer Charts 41
- First Aid Charts 20
- Microscopic Slides

Health Care Basic Chart

Charts size 75x100cms. On Black / White Raxine

Rexine Charts

Size 75x100cms

FUNDAMENTAL NURSING

DFN 1	ACLS Training (Advanced Cardiac Life Support)
DFN 2	Blood Pressure Measurement
DFN 3	Gastrostomy
DFN 4	Tracheostomy
DFN 5	Tube Feeding
DFN 6	Types of Injections
DFN 7	Urinary Cathetrisation
DFN 8.	Venipuncture Procedure
DFN 9	Fundamental Lab Equipment
DFN 10	Fundamental Lab instruments
DFN 11	Steps of Endotracheal Intubation
DFN 12	Ear Irrigation
DFN 13	Eye Irrigation
DFN 14	Pupil Examination
DFN 15	Adult Basic Life Support Algorithm of Healthcare Providers.
DFN 16.	Adult Cardiac Arrest
DFN 17.	Glasgow Coma Scale
DFN 18.	Pediatric BLS Algorithm
DFN 19.	Universal Pain Assessment Tool
DFN 20	Differential Diagnosis of Neck
DFN 21	General Examination
DFN 22	Administration of An Enema

FIRST AID CHARTS

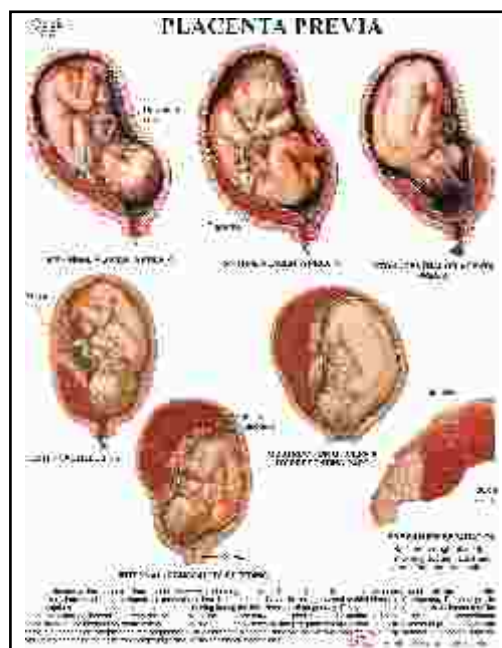
DFA01.	Burns
DFA02	CPR Adult (BLS Training)
DFA03	CPR for CHILD
DFA04	Choking Infant (New Born Resuscitation)
DFA05	Fractures
DFA06	Drowning
DFA07	Types of Wound
FA08	Poisoning (Drug & Alcohol)
FA 09	Poisoning (Food Plant and Fungi)
DFA 10	Treatment of Common Poisons
DFA 11	Bite (Snake & Animal)
DFA 12	Triangular Bandages
DFA 13	Roller Bandages
DFA 14	First Aid Material
DFA 15	Action In Emergency (Artificial Respiration)
DFA 16	Management of Asthma
DFA 17	Corona Virus (COVID-19)
DFA 18	PPE Kit
DFA 19	Handwashing Technique
DFA 20	Hemorrhage
DFA 21	Transport of The Injured
DFA22	Foreign Object In the Eye, Ear & Nose

Rexine Charts

Size 75x100cms

MIDWIFERY & CHILD HEALTH NURSING LAB

DMC 1	Breast Changes in Pregnancy
DMC 2	Uterine Changes in Pregnancy
DMC 3	First Stage of Labour
DMC 4	Second Stage of Labour
DMC 5	Third Stage of Labour
DMC 6	Complete Breech Presentation
DMC 7	Incomplete Breech Presentation
DMC 8	Foot Presentation
DMC 9	Shoulder Presentation
DMC 10	Face presentation
DMC 11	Brow presentation
DMC 12	Twin Pregnancy
DMC 13	Placenta Praevia
DMC 14	Caput Succedaneum, Cephalhaematoma
DMC 15	Congenital malformations of new born
DMC 16	Cleft Lip-Palate
DMC 17	Spina Bifida
DMC 18	Hydrocephalus
DMC 19	Anencephalus
DMC 20	Breast Self Examination



DMC 13

Charts size 75x100cms. On Black / White Raxine

Human - total 64 charts

STRUCTURES/ORGANS

CH 564 Heart
 CH 565 Brain
 CH 566 Spinal Nerves
 CH 567 Skeleton-II (Vertebrae, Sacrum &)
 CH 568 Skeleton III (Girdles & Limbs)
 CH 569 Vertebral Column
 CH 570 Human Skull
 CH 571 Head & Neck
 CH 572 Eye
 CH 573 Ear
 CH 574 Ear, Nose & Throat
 CH 575 Skin
 CH 576 Nephron
 CH 577 Shoulder & Elbow
 CH 578 Hand & Wrist
 CH 579 Hip & Knee
 CH 580 Foot & Ankle
 CH 581 Teeth
 CH 582 Human Liver
 CH 583 Kidney
 CH 584 Pregnancy & Birth
 CH 585 Pharynx & Larynx
 CH 585A Larynx
 CH 586 Embryo Development
 CH 587 Human Anatomy
 CH 587A Human Blood Cells.
 CH 599 Blood Types
 CH 588 Nose
 CH 589 Tongue
 CH 589A Oral cavity
 CH 590 Human Joints
 CH 301 The Cell
 CH 592 Menstrual Cycle
 CH 593 Spinal Cord
 CH 593A Scoliosis
 CH 594 Sense organs
 CH 595 Muscles
 CH 596 Bones & Cartilage
 CH 309 Oogenesis
 CH 310 Spermatogenesis
 CH 10 DNA
 CH 11 RNA

SYSTEMS OF HUMAN BODY

CH 551 Muscular System
 CH 551A Muscular Back View
 CH 552 Skeleton-I (Entire skeleton, vertebral)
 CH 552A Skeleton (Back view)
 CH 553 Nervous System
 CH 554 Autonomic Nervous System
 CH 554A Vestigial Organs
 CH 555 Arterial System
 CH 556 Venous System
 CH 557 Lymphatic System
 CH 558 Digestive System
 CH 548 Intestine Large-Small
 CH 549 The Pancreas
 CH 549A The Spleen
 CH 550 Stomach
 CH 559 Respiratory System
 CH 559A Trachea
 CH 598 Lungs
 CH 560 Excretory System
 CH 561 Female Reproductive System
 CH 562 Male Reproductive System
 CH 563 Endocrine System
 CH 597 Human Immune System

CH 02a Cell Organelles
 CH 03 Endoplasmic Reticulum
 CH 04 Mitochondria
 CH 05 Golgi Complex
 CH 06 Chloroplast
 CH 07 Nucleus
 CH 08 The Chromosome
 CH 08 A Gene Map - Male
 CH 08B Gene Map - Female
 CH 09 Protein Synthesis
 CH 10 D.N.A.
 CH 11 R.N.A.
 CH 12 Centrioles , Flagella & Cilia
 CH 1127 Enzymes
 CH 13A Ribosomes & Lysosomes
 CH 14 Microbodies

GENETICS - 16 CHARTS

CH 15 Monohybrid Crossing-Incomplete Dominance
 CH 16 Dihybrid Crossing
 CH 17 Monohybrid Crossing
 CH 18 Mendelian Explanation Garden Pea- Complete Dominance
 CH 19 Sex linked inheritance in Drosophila
 CH 19A Life Cycle Drosophila
 CH 20 Codominance (Coat. Colour in Andalusian fool)

CH 22A Chromosomal Aberrations & Mutations

CH 22B Linkage & Crossing Over
 CH 283 Analogous Organs: Plants
 CH 284 Homologous Organs: Plants
 CH 285 Analogous Organs: Animals
 CH 286 Homologous Organs: Animals
 CH 287 Pedigree Analysis: Rolling Tongue
 CH 288 Pedigree Analysis: Blood Group
 CH 289 Pedigree Analysis: Color Blindness
 CH 290 Pedigree Analysis: Widow's Peak

PARASITOLOGY & DISEASES - 30CHARTS

CH 23 Cardiovascular Disease
 CH 24 Malaria
 CH 25 Tuberculosis
 CH 26 Cholera
 CH 27 Typhoid
 CH 27A Jaundice
 CH 28 Dysentery
 CH 29 Diarrhoea
 CH 30 Filariasis
 CH 31 Leprosy
 CH 32 Pathogenic Protozoa
 CH 32A Microorganism
 CH 33 Entamoeba (Life Cycle)
 CH 34 AIDS (Acquired Immuno Deficiency)
 CH 34A Influenza
 CH 35 Enterobius vermicularis (Pinworm)
 CH 36 Malarial Parasite Life History (Plasmodium vivax)
 CH 37 Ascaris lumbricoides Life History
 CH 37A Ring Worm
 CH 38 Fasciola hepatica (Liver Fluke)
 CH 39 Ancylostoma duodenale (Hookworm)
 CH 40 Deficiency Diseases
 CH 40A Goitre
 CH 40B Scurvy
 CH 40C Night Blindness
 CH 40D Rickets
 CH 40E Kwashiorkar
 CH 40F Marasmus
 CH 41 Vectors of Human Diseases
 CH 42 Colour Blindness & Hemophilia
 CH 42a Ishihara test for colour blindness
 CH 42b Snellen Chart
 CH 43 Prevention of Diseases

CH 43A L.H. Leishmania & Tryposoma

NUTRITION TOTAL 8 CHARTS

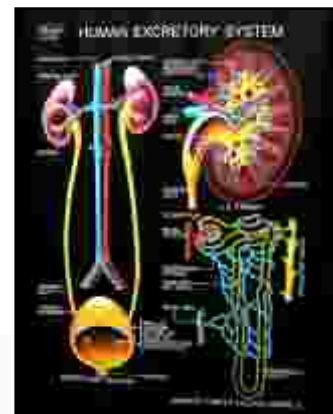
CH 44 Balanced Diet
 CH 44A Vitamins
 CH 44B Weight for Height.
 CH 44C Carbohydrates
 CH 44D Fats
 CH 44E Fibers
 CH 44F Minerals
 CH 44G Proteins

ECOLOGY - 31 CHARTS

CH 56 Ozone Layer
 CH 57 Green House Effect
 CH 58 Seasons
 CH 59 Biogas Plant
 CH 60 Water Cycle
 CH 61 Nitrogen Cycle
 CH 62 Carbon Cycle
 CH 63 Oxygen Cycle
 CH 64 Environmental Pollution
 CH 65 Food Web
 CH 66 Food Chain
 CH 66A Energy Flow Food Pyramid
 CH 67 Land Pollution
 CH 67A Disaster & Its Management
 CH 68 Phosphorous Cycle
 CH 69 Sulphur Cycle
 CH 152 Hydrophytic Plants
 CH 154 Xerophytic Plants
 CH 154A Xerophytic Animals
 CH 154B Aquatic Animals
 CH 155 Mesophytic plants
 CH 156 Epiphytic plants
 CH 156A Orchid plants
 CH 157 Insectivorous plants
 CH 157A Drossera
 CH 157B Nepenthes
 CH 158 Fossil Plants
 CH 158A Rhynia
 CH 158B Fossil & its Types
 CH 160 Hydrilla
 CH 291 Hydrosere
 CH 292 Xerosere
 CH 294 Adaptation : Plant & Animal

PLANT PHYSIOLOGY - 11 CHARTS

CH 45 Plant Respiration
 CH 46 Plant Transpiration
 CH 47 Plant Osmosis & Root Pressure
 CH 47A Plasmolysis & Diffusion
 CH 48 Photosynthesis - Light Reaction
 CH 49 Photosynthesis - Dark Reaction
 CH 50 Glycolysis
 CH 51 Krebs Cycle
 CH 52 Transport in a Plant
 CH 53 Phototropism & Geotropism
 CH 53A Plant Hormones & Their function
 CH 54 Cellular Respiration
 CH 55 Photosynthesis
 CH 282 Emasculation, Bagging & Tagging



Biology -total 111 charts

CYTOLOGY TOTAL 20 CHARTS

CH 142 Cell Cycle
 CH 01 Cell Membrane
 CH 01A Plasma Membrane
 CH 02 Plant Cell Wall

Red Colored Charts on White Raxine.

Ask for Medical : Anatomy, Physiology, Bio-Chemistry, Pharmacology, Microbiology, PSM, FMT Charts

CH 560

Botany charts

Charts size 75x100cms. On Black / White Raxine

PLANT PATHOLOGY

- CH 104 Plant Diseases : Bacterial & Viral
- CH 105 Plant Diseases: Fungal

MEDICINAL PLANTS

- CH 106 Medicinal Plants -I(Exp. from India)
- CH 107 Medicinal Plants -II (Imp. in India)
- CH 108 Medicinal Plants -III (Endangered Species)
- CH 109 Medicinal Plants -IV (Prohibited to Export from India)

BIO-CHEMISTRY- 37 CHARTS

- CH 04 Structure of Mitochondria
- CH 06 Chloroplast structure
- CH 1100 Calvin Cycle (C₃Cycle)
- CH 1100A Photo Respiration (C₂Cycle)
- CH 1101 Carbohydrates - I
- CH 1102 Carbohydrates - II
- CH 1103 Lipids
- CH 1104 oxidation of fatty acids
- CH 1108 Urea Cycle
- CH 1113 Ribosomes & Lysosomes
- CH 1114 Transcription & Translation factors
- CH 1115 Aminoacyl-t RNA biosynthesis
- CH 1117 Carbohydrate metabolism - TCA Cycle
- CH 1118 Electron Transport Chain
- CH 1119 Lac Operon
- CH 1120 Carbohydrate metabolism - Glycogenesis & Glycogenolysis
- CH 1122 Proteins (Structural Organization)
- CH 1123 Nucleic Acid - DNA
- CH 1124 Nucleic Acid -RNA
- CH 1125 Central Dogma
- CH 1126 Electrophoresis
- CH 1127 Enzymes Detailed
- CH 1128 Carbohydrate metabolism - Glycolysis
- CH 1129 DNA Protein interaction
- CH 1130 Carbohydrate metabolism - Gluconeogenesis
- CH 1133 C₄ Cycle and CAM Plants (hatch & Slack)

- CH 1134 Biosynthesis of Triglycerides & Cholesterol
- CH 1135 Biosynthesis of saturated Fatty Acids
- CH 1136 Essential & Non Essential Amino Acid
- CH 1137 Amino Acid Metabolism
- CH 1139 Bacterial Genetic Transformation
- CH 1139A Gene Transfer In Bacteria: Conjugation
- CH 1139B Gene Transfer In Bacteria: Transduction
- CH 1139C Gene Transfer In Bacteria: Transformation
- CH 1140 Hershey - Chase Experiment
- CH 1142 Mechanism of Blood Coagulation
- CH 1143 Hormones and their Physiological Roles
- CH 1144 Biochemical Aspects of Diabetes Mellitus
- CH 1145 ABC Transporters
- CH 1146 Phosphotransferase System (PTS)
- CH 1147 Role of Insulin in Human

BIO- TECHNOLOGY

total 46 CHARTS

- CH 10 DNA-Structure
- CH 18 Mendelian Laws of Inheritance
- CH 22A Mutations and chromosomal Aberrations
- CH 22B Linkage and Crossing Over
- CH 1151 Method of sterilization
- CH 1152 Microbial Species and Strains
- CH 1153 Hypersensitive Reactions
- CH 1154 Immune Response to an Infection
- CH 1155 Blotting Techniques
- CH 1156 DNA Replication
- CH 1157 HIV Life Cycle
- CH 1158 Genetic Code
- CH 1159 Prokaryotic Gene Expression
- CH 1160 The immune System
- CH 1161 Antigen - Antibody Interactions
- CH 1162 Cell Culture (Primary & Secondary)
- CH 1163 Genetic Engineering
- CH 1164 Recombinant DNA Technology
- CH 1165 Gene Cloning and Transfer
- CH 1165a Cloning Dolly sheep
- CH 1166 Transgenic Animals
- CH 1167 Environmental Biotechnology
- CH 1169 Gene Interactions
- CH 1170 Genetic Disorders
- CH 1170A Patau Syndrome
- CH 1170B Turner Syndrome
- CH 1170C Edward Syndrome
- CH 1170D Down Syndrome
- CH 1171 Microbial Genetics (Griffith Exp.)
- CH 1172 Immunoglobulin Structure
- CH 1173 B & T Lymphocytes
- CH 1174 Humoral & Cell Mediated Immunity
- CH 1175 PCR (Polymerase Chain Reaction)
- CH 1176 Complement System
- CH 1177 MHC Clan- I Molecule
- CH 1178 MHC Clan- II Molecule
- CH 1179 DNA Repair Mechanism
- CH 1179A DNA Finger Printing
- CH 1180 Monoclonal Antibody Production
- CH 1181 Nuclear Splicing

- CH 1182 Invitro Fertilization
- CH 1183 Yeast Artificial Chromosome
- CH 1184 Gene Therapy
- CH 1186 Retroviruses & Replication
- CH 1187 Transposons
- CH 1188 Signal Transduction
- DBT 01 Nucleotides & Biosynthesis
- DBT 02 Growth Hormone
- DBT 03 Active - Passive Transport
- DBT 04 Antigens
- DBT 05 Total count of Blood (RBC-WBC count)

Botany- total 198 charts

ALGAE - 20 CHARTS

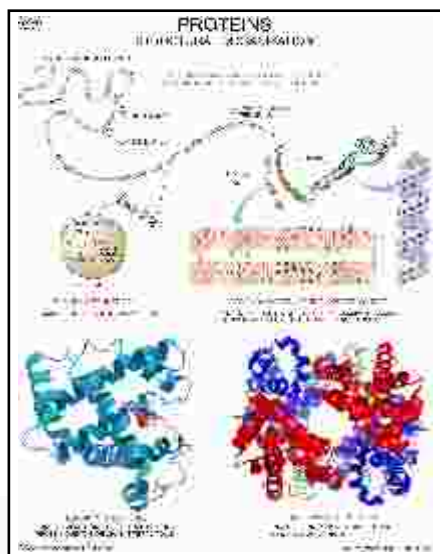
- DBot 01 Anabena
- DBot 02 Algae Classification
- DBot 03 Myxophyceae (B.G. Algae)
- CH 70 Chlamydomonas Structure & Life Cycle.
- CH 71 Ulothrix Structure & Life Cycle
- CH 72 Oedogonium Life Cycle
- CH 73 Spirogyra Structure & Reproduction.
- CH 74 Chara Structure and Life History
- CH 75 Volvox Structure and Life History
- CH 76 Oscillatoria Structure and Life History
- CH 77 Nostoc Structure and Life History
- CH 78 Batrachospermum Structure & Life History
- CH 79 Polysiphonia Structure & Life History
- CH 80 Ectocarpus Structure & Life Cycle
- CH 81 Dictyota Structure and Life History
- CH 82 Fucus Structure & Life Cycle
- CH 83 Vaucheria Structure & Life History
- CH 84 Sargassum Structure & L.H.
- CH 85 Diatoms Structure & Reproduction.
- CH 86 Chlorella : Structure & Life Cycle

FUNGI 24 CHARTS

- DBot 04 Fungi Classification
- CH 87 Erysiphe
- CH 88 Morchella
- CH 89 Polyporus
- CH 89A Cladophora
- CH 90 Rhizopus Structure & Reproduction.
- CH 91 Mucor Structure & Reproduction.
- CH 92 Yeast : Saccharomyces
- CH 93A Prokaryotic cell
- CH 93 Bacteria: Structure and Forms
- CH 94 Bacteria: Reproduction
- CH 95 Viruses
- CH 95A Lytic & Lysogenic Cycle
- CH 96 Penicillium
- CH 97 Albugo candida
- CH 98 Phytophthora infestans
- CH 99 Puccinia graminis Life Cycle
- CH 100 Agaricus campestris (Mushroom)
- CH 101 Peziza Structure & Reproduction
- CH 102 Lichens
- CH 103 Aspergillus
- CH 103A Claviceps (Ergot of Rye.)
- CH 103B Alternaria
- CH 103C Ustilago

BRYOPHYTA - 8 CHARTS

- DBot 05 Bryophyta Classification
- CH 110 Porella
- CH 111 Riccia Str. & reproduction
- CH 112 Marchantia Structure & Life History
- CH 113 Anthoceros Structure & reproduction
- CH 114 Funaria (Moss) Life
- CH 114A Sphagnum
- CH 114B Polytrichm : Structure & L.C.



CH 1127

Charts size 75x100cms. On Black / White Raxine

PTERIDOPHYTA - 21 CHARTS

- DBot 06 Pteridophyta Classification
 Dbot 07 Azola
 CH 115 Selaginella Reproduction
 CH 115A Selaginella Structure
 CH 116 Psilotum Life History
 CH 116A Psilotum Structure
 CH117 Marsilea Reproduction
 CH 117A Marsilea Structure
 CH 118 Lycopodium Structure
 CH 118A Lycopodium Reproduction
 CH 119 Equisetum Reproduction
 CH 119A Equisetum Structure
 CH 120 Aspidium (Fern) Life History
 CH 120A Aspidium (Fern) Structure
 CH 121 Pteris (Fern) Life History
 CH 121A Pteris (Fern) Structure
 CH 122 Nephrolepis (Fern) L. H.
 CH 122A Nephrolepis (Fern) Str.
 CH 123 Adiantum Life History
 CH 123A Adiantum Structure
 CH 124 Rhizome Sections

ANGIOSPERMS - 25 CHARTS

- CH 141 Angiosperm Classification
 CH 142 Cell cycle
 CH 143 L.C. of Angiosperms
 CH 144 Bentham & Hooker Classification
 CH 145A Eukaryotic Cell
 CH 145 Plant cell (Ultra structure)
 CH 146 Mitosis in Plants
 CH 147 Meiosis in Plants
 CH 148 Structure of Chromosome during mitosis
 CH 149 Structure of Chromosome during meiosis
 CH 150 Parts of a Plant (Mustard)
 CH 151 Plant Kingdom - I (Flowering)
 CH 151A Plant Kingdom - II (Non-flowering)
 CH 153 Datura Life Cycle (Rep. In plant)
 CH 159 Comparison of Monocot & Dicot Plants
 CH 210 Androecium (Male Reproductive)
 CH 211 Gynaecium (Female Reproductive)
 CH 213 Placentation
 CH 214 Aestivation
 CH 215 Mitosis vs Meiosis
 CH 216 Inflorescence-1 (Simple, Racemose & Cymose)
 CH 217 Inflorescence - II (Compound & Special)
 CH 218 Different Types of Pollination
 CH 219 Forms of Ovules

CH 219 A Orthotropous or Atropous Ovule

CH 219 B Anatropous Ovule

CH 219 C Amphitropous Ovule

CH 219 D Campylotropous Ovule

CH 220 Types of Flowers

GYMNOSPERMS - 8 CHARTS

CH 129 Gymnosperms Classification

- CH 130 Cycas Life History
 CH 131 Cycas Anatomy
 CH 133 Gnetum Anatomy
 CH 133A Gnetum Life Cycle
 CH 134 Ephedra Structure and L.H.
 CH 135 Pinus Life History
 CH 136 Pinus Anatomy

ROOTS, STEMS, LEAVES - 31 CHARTS

- CH 172 Vascular Bundles
 CH 173 Stomata
 CH 174 T.S. Dicot root
 CH 175 T.S. Monocot root
 CH 176 T.S. Dicot stem
 CH 177 T.S. Monocot stem
 CH 178 T.S. Dicot leaf
 CH 179 T.S. Monocot leaf

- CH 180 Secondary Growth in Dicot Stem
 CH 181 Secondary Growth in Dicot root
 CH 182 Root modification
 CH 183 Aerial Stem modification
 CH 184 Leaf modification
 CH 185 Vegetative propagation
 CH 186 Artificial Vegetative propagation
 CH 187 Specialized stems
 CH 188 Typical leaf showing parts
 CH 189 Types of leaves
 CH 189A Types of Leaf Apex
 CH 189B Types of Leaf Margin
 CH 189C Types of Leaf Base
 CH 190 Simple leaves
 CH 191 Stipules
 CH 192 Leaf Venation
 CH 193 Compound Leaves
 CH 194 Phyllotaxy
 CH 195 Leaf Laminae
 DBot11 Nyctanthes stem
 DBot 12 Cucurbita stem
 Dbot 13 Meristem (Shoot /Root Tip)
 DBot 14 Amranthus stem
 ANOMALOUS SEC. GROWTH IN STEM -5 CHARTS
 DBot 15 Boerhavia & Nyctanthes
 DBot 16 Sergenia & Drasenna
 DBot 17 Leptodenia & Aristochania
 DBot 18 Mirabilis jalapa & Bignonia
 DBot 19 Achyranthus Asper & Boughanvilla

SEEDS & FRUITS - 7 CHARTS

- CH 161 Pea Germination
 CH 162 Castor seed Germination (Dicot seed)
 CH 163 Rice Germination (Monocot seed)
 CH 164 Hypogeal Seed Germination (Gram & Maize)
 CH 165 Epigeal Seed Germination (Bean & Sunflower)
 CH 169 Dispersal of Seeds & Fruits
 CH 170 Classification of Fruits

FLOWER & EMBRYOLOGY - 12 CHARTS

- CH 200 Parts of Flower
 CH 201 Fertilization showing germination of Pollen grain
 CH 202 Germination of Pollen Grain & Development of Male Gametophyte
 CH 203 T.S. Anther & Its Development
 CH 203A Anther & Pollen Culture
 CH 204 Megasporogenesis
 CH 205 Development of Embryo and Endosperms
 CH 206 Development of Embryo in Sagittaria
 CH 208 Microsporangium
 CH 209 Types of Embryo Sacs
 CH 212 Development of Monocot Embryo
 CH 212A Development of Dicot Embryo Capsella

HISTOLOGY - 6 CHARTS

- CH 221 Plant Anatomy Part I Simple Tissues
 CH 221A Parenchyma & Collenchyma
 CH 221B Sclerenchyma (Sclereids)
 CH 222 Plant Anatomy Part II Complex Tissues; Xylem
 CH 223 Plant Anatomy Part III Complex Tissue; Phloem
 CH 224 Plant Tissue Culture
 CH 225 Xylem vs Phloem

Taxonomy families - TOTAL 51 CHARTS

ACANTHACEAE

CH 229 Ruellia tuberosa - L

AMARANTHACEAE

CH 230 Achyranthes aspera - L

RANUNCULACEAE

- CH 231 Ranunculus muricatus
 CH 232 Delphinium ajacis (Larkspur)

BRASSICACEAE (CRUCIFERAE)

- CH 233 Brassica campestris (Mustard)
 PAPAVERACEAE

- CH 234 Papaver rhoeas (Garden Poppy)
 CH 235 Argemone mexicana

MUSACEAE

- CH 236 Musa paradiasiaca (Banana)

MALVACEAE

- CH 237 Malva Sylvestris
 CH 238 Althaea rosea (Holly Hock)
 CH 239 Hibiscus rosa sinensis (Shoe Flower)
 CH 240 Gossypium herbaceum

RUTACEAE

- CH 241 Citrus aurantium

MELLIACE

CH 242 Malia azedarach

FABACEAE (LEGUMINOSAE)

- CH 243 Lathyrus odoratus (Papilionatae)
 CH 244 Cassia fistula (Caesalpinioideae)
 CH 245 Acacia nilotica (Mimosoideae)
 CH 275 Clitoria ternetea

ROSACEAE

- CH 246 Rosa indica (Rose)

ORCHIDACEAE

- CH 247 Vanda roxburghii

CUCURBITACEAE

- CH 249 Luffa aegyptiaca

CARYOPHYLLACEAE

- CH 250 Silene conoidea (Catch fly)

CHENOPODIACEAE

- CH 251 Chenopodium album

EUPHORBIACEAE

- CH 252 Ricinus communis
 CH 254 Euphorbia splendens

POLYGONACEAE

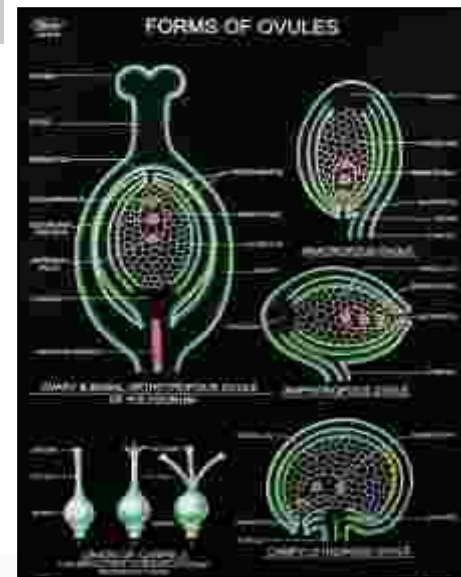
- CH 255 Polygonum

ASTERACEAE (COMPOSITAE)

- CH 256 Helianthus annuus (Sunflower)
 CH 257 Sonchus asper
 CH 276 Tridax procumbens

SOLANACEAE

- CH 258 Solanum nigrum
 CH 259 Petunia hybrida
 CH 277 Datura metal



CH 219

Red Colored Charts on White Raxine.

Gynecology, Hematology/Oncology, Infectious Disease, Nephrology, Neurology, Psychiatry, Surgery

Zoology charts

Charts size 75x100cms. On Black / White Raxine

RUBIACEAE

CH 278 Ixora coccinea

ARECACEAE

CH 279 Cocus nucifera

MORACEAE

CH 280 Morus nigra; Ficus sunia

ASCLEPIADACEAE

CH 260 Calotropis procera (Aak)

BIGNONIACEAE

CH 261 Tecoma stans

LAMIACEAE (LABIATAE)

CH 262 Salvia officinalis

CH 263 Ocimum basilicum

APOCYNACEAE

CH 264 Nerium odorum (Oleander)

SAPOTACEAE

CH 265 Achras sapota

ANNONACEAE

CH 266 Annona squamosa (Sitaphal)

LILIACEAE

CH 267 Asphodelus tenuifolius

CH 268 Allium cepa (Onion)

CH 268A Asparagus

POACEAE (GRAMINEAE)

CH 269 Avena sativa (Oat)

CH 270 Zea mays (Maize)

CH 273 Triticum vulgare (Wheat)

APIACEAE (UMBELLIFERAE)

CH 271 Coriandrum sativum (Dhania)

CONVOLVULACEAE

CH 272 Ipomoea palmata

MYRTACEAE

CH 274 Psidium guajava

ZOOLOGY - total 235 charts

CELLS & TISSUES - 11 CHARTS

CH 301 Animal Cell (Ultra Structure)

CH 302 Animal Mitosis (Cell Division)

CH 303 Animal Meiosis (Cell Division)

CH 304 Animal Tissues-I

CH 305 Animal Tissues-II

CH 306 Animal Tissues-III

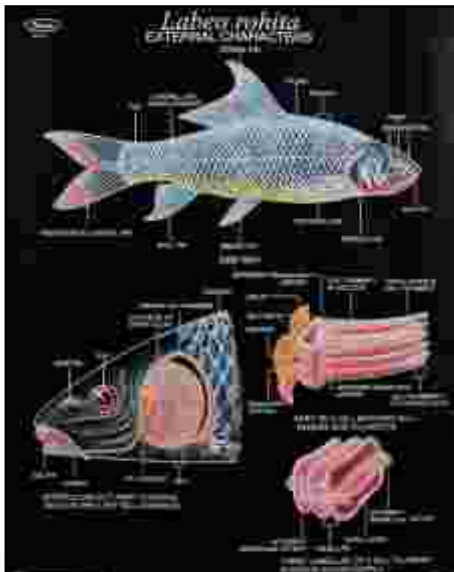
CH 306A Nerve Cell

CH 307 Gametogenesis

CH 308 Fertilization in Animals

CH 309 Oogenesis

CH 310 Spermatogenesis



CH 412

PROTOZOA - 7 CHARTS

CH 315 Amoeba Structure & Locomotion

CH 36 Plasmodium vivax

CH 317 Paramecium Structure

CH 318 Paramecium Rep.-I

CH318 A Paramecium Rep.-II

CH 319 Euglena Structure & L. H.

CH 33 Entamoeba (Life Cycle)

PORIFERA - 4 CHARTS

CH 325 Phylum Porifera

CH 325A Sponge Gemmule

CH 326 Sycon Development

CH 326 A Canal Systems in Sponges

COELENTERATA - 6 CHARTS

CH 327 Obelia Structure

CH327A Corals & Coral Reefs

CH 328 Hydra structure & Internal Anatomy

CH 328A Aurelia str. & Life History

CH 329 Sea Anemone External

CH 329A Sea Anemones Anatomy

CH 329B Types of Flat Worm

PLATYHELMINTHES - 5 CHARTS

CH 36A Types of Round Worm

CH 37 Ascaris Internal Structure of Male & Female

CH 330 Taenia solium Structure & L. H. (Tapeworm)

CH 38 Liverfluke Str. & Life History

CH 39 Ancylostoma duodenale Life Cycle (Hook Worm)

CH 39A Planaria

ANNELIDA - 14 CHARTS

CH 333 Annelida Types

CH 334 Earthworm External Characters

CH 335 Earthworm internal Anatomy

CH 336 Earthworm Development

CH 337 Earthworm Reproductive System

CH 338 Earthworm Nervous System

CH 339 Earthworm Digestive System

CH 340 Earthworm Excretory System

CH 341 Earthworm Circulatory System

CH 343 Leech External

CH 343A Leech Digestive

CH 343B Leech T.S

CH 343C Leech Reproductive

CH 343D Leech Nervous System

CH 344 Neries

ARTHROPODA - 37 CHARTS

CH 351 Arthropoda Types

CH 352 LAC Insect

CH 353 Beneficial Insects

CH 354 Harmful Insects

CH 355 Food Grain Pests

CH 355A Insects Mouth Parts

CH 356 Housefly L.H

CH 357 Mosquito L. H. showing comparison of Culex & Anopheles

CH 358 Butterfly L.H.

CH 358A Types of Butterfly

CH 359 Honey Bee L.H.

CH 360 Silkworm L.H.

CH 360A Sericulture

CH 361 Grasshopper L.H.

CH 361A Grasshopper Digestive System

CH 362 Cockroach L.H.

CH 362 A Cockroach Anatomy

CH 363 Cockroach External Character

CH 363 A Cockroach Mouth Parts

CH 364 Cockroach Digestive System

CH 365 Cockroach Respiratory system

CH 366 Cockroach Circulatory System

CH 367 Cockroach Nervous system

CH 368 Cockroach Reproductive system

CH 368 A Cockroach Excretory

CH 369 Prawn Internal Anatomy

CH 370 Prawn External Anatomy

CH 371 Prawn Reproductive system

CH 372 Prawn Digestive system

CH 373 Prawn Excretory system

CH 374 Prawn Nervous System

CH 375 Prawn Circulatory system

CH 376 Scorpion External character

CH 376A Scorpion Digestive System

CH 376B Scorpion Circulatory

CH 376C Scorpion Nervous

CH 376D Scorpion Reproductive

CH 377 Spider

CH 378 Millepede

CH 379 Mollusca Types

MOLLUSCA - 13 CHARTS

CH 380 Pila External Characters

CH 381 Pila Reproductive System

CH 382 Pila Circulatory System

CH 383 Pila Nervous System

CH 384 Pila Sense Organs

CH 385 Pila Res. & Excretory system

CH 386 Pila Digestive System

CH 387 Unio External Characters

CH 388 Unio Circulatory system

CH 389 Unio Internal Anatomy

CH 390 Unio Nervous System

CH 391 Unio Respiratory System

CH 392 Unio Digestive System

CH 393A Sepia officinalis Nervous System

ECHINODERMATA-2 CHARTS

CH 394 Echinodermata Types

CH 395 Starfish (Asterias)

Ext. Characters & Anatomy

CH 396 Starfish (Asterias)

Water Vascular System

PISCES - 23 CHARTS

CH 401 Scoliodon External Characters

CH 402 Scoliodon General Viscera

CH 403 Scoliodon Digestive System

CH 404 Scoliodon Brain different views

CH 405 Scoliodon Skeleton

CH 406 Scoliodon Skull

CH 407 Scoliodon Urinogenital System

CH 409 Scoliodon Venous Aystem

CH 409A Scoliodon Arterial System

CH 410 Scoliodon Cranial Nervous System

CH 411 Scoliodon Receptor organs

CH 412 Labeo rohita External Characters

CH 413 Labeo rohita Axial Skeleton

CH 414 Labeo rohita Skull

CH 414A Labeo rohita Digestive

CH 414B Labeo rohita Respiratory

CH 414C Labeo rohita Urinogenital

CH 414D Labeo rohita Eye & ear

CH 414E Labeo rohita Heart

CH 414F Labeo rohita Cranial Nervous

CH 414G Labeo rohita Circulatory

CH 420 Fish Types

CH 421 Fish Respiratory System

CHORDATA - 11 CHART

CH 415A Classification Chordates

CH 415B Hemi Chordata Types

CH 415 Amphioxus External Characters

CH 416 Amphioxus General Anatomy

CH 417 Amphioxus T.S. through

Different Regions

Charts size 75x100cms. On Black / White Raxine

Rs. 800/-

- CH 418 Amphioxus Development
- CH 419 Amphioxus Excretory System
- CH 422 Herdmania Metamorphosis
- CH 422A Herdmania Development
- CH 422B Herdmania External
- CH 422C Herdmania Heart & Blood vascular
- CH 423 Balanoglossus

AMPHIBIA - 20 CHARTS

- CH 425 Frog External Characters
- CH 426 Frog Internal Anatomy
- CH 427 Frog Skeleton
- CH 428 Frog Skull different views
- CH 429 Frog Development - I
Egg to Gastrulation
- CH 430 Frog Development-II
Gastrula to Tadpoles
- CH 431 L.H. Frog showing Metamorphosis
- CH 432 Frog Digestive System
- CH 433 Frog Nervous System
- CH 434A Frog Male Reproductive System
- CH 434B Frog Female Reproductive System.
- CH 435 Frog Excretory System
- CH 436 Frog Arterial System
- CH 437 Frog Venous System
- CH 438 Frog Respiratory System
- CH 439 Frog Eye
- CH 440 Ear
- CH 443 Frog Skin V.S
- CH 444 Frog Brain different views
- CH 445 Frog Heart different views

OTHERS

- CH 446 Personal Safety
- CH 446A Traffic Signals
- CH 446B Road Safety
- CH 449 Cow Digestive System

REPTILIA - 17 CHARTS

- CH 450 Chameleon
- CH 451 Types of Reptiles
- CH 461 Snake Types
- CH 452 Snakes Poisonous & Non poisonous
- CH 453 Varanus Skull Different views
- CH 454 Varanus skeleton
- CH 455 Varanus Circulatory system
- CH 456 Varanus Excretory system
- CH 458A Calotes External systems
- CH 458B Calotes Digestive systems
- CH 458C Calotes Circulatory systems
- CH 458D Calotes Brain
- CH 460A Uromastix Digestive system
- CH 460B Uromastix Arterial system
- CH 460C Uromastix Venous system
- CH 460D Uromastix Nervous system
- CH 462 Lizard External & Internal

AVES - 24 CHARTS

- CH 465 Pigeon External & Internal Characters

- CH 467 Pigeon Skeleton
- CH 468A Pigeon Brain
- CH 468B Pigeon Eye
- CH 468C Pigeon Digestive
- CH 468D Pigeon Arterial
- CH 468E Pigeon Verious
- CH 468F Pigeon Heart
- CH 468G Pigeon Reproductive
- CH 468H Pigeon Ear
- CH 468 I Feather of Pigeon
- CH 468J Pigeon Development
- CH 469 Fowl Skeleton
- CH 470 Chick Development
- CH 471 Chick Embryo - 16 Hrs.
- CH 473 Chick Embryo - 24 Hrs.
- CH 477 Chick Embryo - 48 Hrs.

CH 479 Nest

- CH 480 Chick Embryo - 96 Hrs.

CH 480A Chick Digestive

CH 480B Chick Circulatory

- CH 481 Beaks of Birds
- CH 482 Claws of Birds
- CH 483 Types of Birds

CH 484 Bat

COMPARATIVE STUDY - 12 CHARTS

- CH 510 Vertebrate Hearts
- CH 511 Vertebrate Brains
- CH 512 Vertebrate Skulls
- CH 513 Vertebrate Hind Limbs
- CH 513A Vertebrate Forn Limbs
- CH 514 Vertebrate Girdles
- CH 515 Vertebrate Urinogenital system
- CH 516 Verterbrate Embryos
- CH 517 Vertebrate Arterial arches
Circulation

- CH 518 Vertebrate Genital & venous system

- CH 447 Placenta Types
- CH 448 Distribution of villi
- CH 520 Symbioses

EVOLUTION - 15 CHARTS

- CH 521 Animal Kingdom-II (Vertebrates)
- CH 521A Animal Kingdom-I (Invertebrates)
- CH 521B Classification Invertebrates
- CH 521C Animal Kingdom (Evolution tree)
- CH 522 Evolution of Man
- CH 522A Darwin Finches
- CH 523 Lamarckism
- CH 524 Archaeopteryx
- CH 525 Phylogeny of Horses
- CH 526 Five Kingdom Classification

CH 527A Endangered Animals

CH 527B Domestic Animals

- CH 527C Wild Animals
- CH 527D Animal & Their Young
- CH 528A Carnivores Animals
- CH 528B Herbivores Animals
- CH 528C Omnivores Animals
- CH 528D Mammals

MAMMALS Total (27 CHARTS)

RAT- (13 CHARTS)

- CH 485 Rat External Characters
- CH 486 Rat General Anatomy
- CH 487 Rat Digestive System
- CH 488 Rat Male Reproductive system
- CH 489 Rat Female Reproductive system
- CH 489A Rat Excretory System
- CH 490 Rat Arterial system
- CH 491 Rat Venous system
- CH 492 Rat Nervous system
- CH 493 Rat Respiratory system
- CH 494 Rat Skeleton System
- CH 495 Rat Brain different views
- CH 496 Rat Heart different views

RABBIT - (14 CHARTS)

- CH 497 Rabbit External Characters
- CH 498 Rabbit General Anatomy
- CH 499 Rabbit Digestive System
- CH 500 Rabbit Male Reproductive System
- CH 501 Rabbit Female Reproductive Syst.
- CH 501A Rabbit Excretory System
- CH 502 Rabbit Arterial System
- CH 503 Rabbit Venous System
- CH 504 Rabbit Nervous System
- CH 505 Rabbit Respiratory System
- CH 506 Rabbit Skeleton
- CH 507 Rabbit Brain Different Views
- CH 508 Rabbit Heart Different Views
- CH 509 Rabbit Skull

Visit our Website
www.dbioscharts.com



CH 412

Red Colored Charts on White Rexine.

Roga & Vikriti Vigyan, Shalakaya Tantra, Shalaya Tantra, Sharir Kriya, Shareer Rachna, Swastha Vritta Charts

Microscopic Charts

Ask For other Microscopic Slides in sets only

Dbios zool ogy Digital MicroCharts

Laminated Framed on board Size 12"x 18".

1. Plasmodium Falciparum.
2. Liver Fluke TS.
3. Liver Fluke WM.
4. Waucheria Bancrofti (filaria).
5. Animal Cell.
6. Pituitary Gland.

Dbios Botany Digital MicroCharts

Laminated Framed on board Size 12"x 18".

- | | | | |
|------------------------------|-------------------------|---------------------------|--------------------------------------|
| 1. Typical Plant Cell. | 14. Dicot Stem TS. | 27. Meiosis Diplotene. | 40. Bacteria Bacillus Form. |
| 2. Allium Root Apex. | 15. Dicot Root TS. | 28. Meiosis Diakinesis. | 41. Bacteria Spirillum Form. |
| 3. Apical Stem Meristem LS. | 16. Dicot Leaf TS. | 29. Meiosis Metaphase. | 42. Rhizopus Asexual. |
| 4. Aerenchyma TS. | 17. Anther. | 30. Meiosis Anaphase. | 43. Rhizopus Sexual. |
| 5. Collenchyma TS. | 18. Pollen Grain. | 31. Meiosis Telophase-I. | 44. Puccinia Uredo On Wheat. |
| 6. Sclerenchyma TS. | 19. Mitosis Interphase. | 32. Meiosis Metaphase-II. | 45. Lichen Thallus TS. |
| 7. Xylem TS. | 20. Mitosis Prophase. | 33. Meiosis Anaphase-II. | 46. Moss Plant With Capsule. |
| 8. Phloem TS. | 21. Mitosis Metaphase. | 34. Meiosis Telophase-II. | 47. Riccia Thallus TS. |
| 9. Leaf Epidermis (stomata). | 22. Mitosis Anaphase. | 35. Meiosis Tetrad. | 48. Selaginella Strobillus LS. + WM. |
| 10. Stem Cells. | 23. Mitosis Telophase. | 36. Spirogyra Wm. | 49. Fern Leaf With Sori. |
| 11. Monocot Stem TS. | 24. Meiosis Leptotene. | 37. Chlamydomonas WM. | 50. Fern Prothallus. |
| 12. Monocot Root TS. | 25. Meiosis Zygotene. | 38. Volvox. | |
| 13. Monocot Leaf TS. | 26. Meiosis Pachytene. | 39. Bacteria Coccus Form. | |

Slides Zool ogy (Set of 50 in Box)

- | | | |
|-------------------------------|------------------------------------|---------------------------|
| 1. Nervous Tissue (Straited) | 18. DNA | 35. Culex male |
| 2. Muscle Tissue | 19. Cartilage Ts. | 36. Culex female |
| 3. Muscle Tissue Smooth | 20. Bone Ts. | 37. Hydra budding |
| 4. Amoeba | 21. Bone Ls. | 38. Bad dug (wm) |
| 5. Euglena | 22. Artery Ts | 39. Tick (wm) |
| 6. Plasmodium | 23. Vain Ts. | 40. Lice (wm) |
| 7. Binary fission in Amoeba | 24. Section of taste bud | 41. Mosquito Mouth Parts |
| 8. Hydra epithelium tissue | 25. Tadpole larva fo pog | 42. House fly Mouth Parts |
| 9. Squamous epithelium Tissue | 26. Mosquito larva | 43. Cockroach Mouth Parts |
| 10. Columnar Tissue | 27. Paramecium | 44. Lungs T.s |
| 11. Cuboidal Tissue | 28. Ancylostoma (wm) | 45. Alveoli |
| 12. Blood Smear | 29. Hook worm (wm) | 46. Nephron (wm) |
| 13. Testis Ts. | 30. Cockroach malpighian tube (wm) | 47. Skin Vs. |
| 14. Ovary Ts. | 31. T.S Pancreas | 48. Adrenal gland Ts. |
| 15. Human blastula | 32. Sperm Smear | 49. Morula |
| 16. Entamoeba | 33. Adipose tissue | 50. Miosis stages |
| 17. Cardiac muscles | 34. Areolar tissue | |



Available in Sets only

Imported Slides Botany (Set of 50 in Box)

- | | | | |
|-------------------------------|------------------------------|---------------------------------|---------------------------------|
| 1. Volvox | 14. Mucor Sporangia | 27. Xylem Tissue T.S. | 40. Moss Leaf T.S. |
| 2. Nostoc W.M. | 15. Rhizopus Sporangia | 28. Phloem Tissue T.S. | 41. Stem Apex L.S. |
| 3. Spirogyra W.M. | 16. Rhizopus Veg. W.M. | 29. Collenchyma Tissue T.S. | 42. Cystopus |
| 4. Spirogyra Scalariform W.M. | 17. Monocot Stem T.S. | 30. Aerenchyma Tissue T.S. | 43. Oedogonium |
| 5. Spirogyra Lateral W.M. | 18. Monocot Root T.S. | 31. Plant Cell W.M. | 44. Ovule L.S. |
| 6. Chlamydomonas W.M. | 19. Monocot Leaf T.S. | 32. Pinus Leaf T.S. | 45. Allium Root L.S. |
| 7. Ulothrix W.M. | 20. Dicot Stem T.S. | 33. Stomata Leaf (Dicot) W.M. | 46. Mitosis Onion Root tip L.S. |
| 8. Oscillatoria W.M. | 21. Chlorenchyma Tissue T.S. | 34. Stomata Leaf (Monocot) W.M. | 47. Cycas Leaf T.S. |
| 9. Yeast cell | 22. Dicot Root T.S. | 35. Pollen Grain W.M. | 48. Anabaena W.M. |
| 10. Mucor veg. W.M. | 23. Dicot Leaf T.S. | 36. Flower Anther T.S. | 49. Sclerenchyma Tissue T.S. |
| 11. Penicillium W.M. | 24. Bacteria Coccus Form | 37. Flower Ovary T.S. | 50. Parenchyma Tissue T.S. |
| 12. Aspergillus W.M. | 25. Bacteria Bacillus Form | 38. Root Apex T.S. | |
| 13. Yeast Budding | 26. Bacteria Spirillum Form | 39. Fern Leaf T.S. | |



Animal Mitosis (Set of 5)

Animal Meiosis (Set of 12)

Ask For other Microscopic Slides in sets only

Human /Zool ogy/ Botany Model s

HUMAN MODELS

DHM 01	Torso Sexless 90 cms
DHM 02	Torso Male 90 cms
DHM 03	Torso Female 90 cms
DHM 04	Torso Small
DHM 05	Skeleton (Fiber) Stand
DHM 05A	Human Skeleton Big
DHM 06	Art. Skeleton USA Imp.
DHM 06A	Loose Skeleton USA Imported (Bones)
DHM 07	Brain 2 Parts
DHM 07B	Brain 4 Parts
DHM 07A	Brain 8 Parts
DHM 08	Human Ear
DHM 08A	Big Ear
DHM 09	Human Eye
DHM 09A	Big Eye
DHM 10	H. Tooth 2 Parts (Molar)
DHM 11	Human Heart 2 Parts
DHM 11A	Big Heart
DHM 11B	Lung with Heart
DHM 12	Human Lung
DHM 13	Human Liver
DHM 14	Stomach
DHM 15	Kidney
DHM 31	Teeth
DHM 32	Human Nose
DHM 33	Neuron
DHM 34	Tongue
DHM 35	Larynx
DHM 36	Spinal Cord
DHM 16	Human Rep. Male
DHM 17	Human Rep. Female
DHM 18	Human Digestive
DHM 19	Human Circulatory
DHM 20	Human Nervous

DHM 21	H. Respiratory
DHM 22	H. Excretory
DHM 23	H. Skin
DHM 24	Muscular Sys.
DHM 25	Skeleton Sys.
DHM 26	H. Endocrine
DHM 27	H. Uterus

BOTANY MODELS

DBM 01.	Plant Cell.
DBM 02.	Mitosis Plant
DBM 03.	Meiosis Plant
DBM 04.	Root T.S. Monocot.
DBM 05.	Root T.S. Dicot.
DBM 06.	Stem T.S. Dicot
DBM 07.	Stem T.S. Monocot.
DBM 08.	Leaf T.S. Monocot.
DBM 09.	Leaf T.S. Dicot.
DBM 10.	Typical Flower on Board.
DBM 11.	Flower on Stand
DBM 12.	Mitochondria
DBM 13.	Chloroplast
DBM 14.	Germination of Seed
DBM 15.	Drosera Plant (Sundew)
DBM 16.	Pitcher (Nepenthes)
DBM 17.	Bladder wort (Utricularia)

ZOOLOGY MODELS

DZM 01.	Typical Animal Cell.
DZM 02.	D.N.A.
DZM 02A	DNA helical on Stand
DZM 03.	R.N.A.
DZM 03A	R.N.A. on Stand
DZM 04.	Amoeba
DZM 05.	Paramecium
DZM 06.	Euglena
DZM 07.	Hydra

DZM 08.	Rat
DZM 09.	Rabbit
DZM 10.	Frog
DZM 11.	Cockroach
DZM 12.	Earthworm
DZM 13.	Fish
DZM 14.	Animal Mit.
DZM 15.	Animal Mei.

Ask for Price



DHM 06 Human Skeleton
Size: 170cm. life size

Biological Lab Items

- DI 01. O.H.P. Projector twin bulb
- DI 02. Projection screen wall type
- DI 03. Projection screen Tripod Model
- DI 04. For keeping charts in horizontal position. Each chart rests on Two pegs fixed horizontally. The rack is made of metallic pipes and rods. All folding as per diagram.
(a) Capacity for keeping 24 Charts (b) Capacity for keeping 36 Charts
- DI 05 Camera Lucida
- DI 06 Dissection Box (17 Instruments)
- DI 08 Dissection Microscope Brass Parts, Superior Quality (In Thermocole Box)
- DI 09 Compound Microscope Two eyepiece 10x, 15x & two objectives 10x, 45x with fixed condenser
- DI 10 Medical Microscope with Tow eyepiece 10x, 15x & three objectives 10x, 45x, & 100x oil immersion & fitted With Mechanical Stage.



Pharmacognosy Charts

Pharmacy - total 95 charts

- CH 701 Liquorice Root T.S. (Stolon)
- CH 702 Fennel Fruit T.S. (Mesocarp)
- CH 703 Quassia Wood T.S., T.L.S., & R.L.S.
- CH 704 Cascara Bark
- CH 705 Kurchi Bark T.S.
- CH 706 Eucalyptus Leaf T.S.
- CH 707 Cardamom Seed
- CH 708 Belladonna Root T.S.
- CH 709 Datura Leaf T.S.
- CH 710 Gentian Root T.S.
- CH 711 D.Lanata Leaf T.S.
- CH 712 Ipecac Root T.S.
- CH 713 Coriander Fruit T.S. of Mericarp
- CH 714 Vasaka Leaf T.S.
- CH 715 Podophyllum Rhizome T.S.
- CH 716 Digitalis purpurea Leaf T.S.
- CH 717 Pepper Fruit T.S.
- CH 718 Ispaghula Seed T.S.
- CH 719 T.S. Portion of Clove-Flower Bud
- CH 720 T.S. Rauwolfia Root
- CH 721 Cinchona Bark
- CH 722 Cinammon Bark
- CH 723 T.S Aconite Root
- CH 724 T.S Dill fruit
- CH 725 T.S Velerian Root
- CH 726 T.S Ephedra Stem
- CH 727 Cassia Bark
- CH 728 Ginger Rhizome
- CH 729 Senna Leaflet
- CH 730 Podophyllum Root
- CH 731 Nux-Vomica Seed
- CH 732 Linseed
- CH 733 Vinca leaf
- CH 734 Urginea (Indian Squill)
- CH 735 Ashoka Bark T.S.
- CH 736 Ergot Sclerotium
- CH 737 Hyoscyamus Leaf T.S.
- CH 739 Microscopical Characteristics of Powdered Drug: Clove Bud
- CH 740 Microscopical Characteristics of Powdered Drug: Cassia Bark
- CH 741 Microscopical Characteristics of Powdered Drug: Cinnamon Bark
- CH 742 Microscopical Characteristics of Powdered Drug: Cinchona Bark
- CH 743 Microscopical Characteristics of Powdered Drug: Isapgol Seed

- CH 744 Microscopical Characteristics of Powdered Drug: Rauwolfia Root
- CH 745 Microscopical Characteristics of Powdered Drug: Senna Leaf
- CH 746 Microscopical Characteristics of Powdered Drug: Datura Leaf
- CH 748 Acetate Malonate Pathway
- CH 749 Standardisation of Herbal Drugs
- CH 750 Mevalonate Pathway
- CH 751 Types of Trichomes
- CH 752 Clevenger Apparatus
- CH 753 Soxhlet Apparatus
- CH 754 Cell Contents in Plant tissue
- CH 755 Shikmic Acid Pathway
- CH 767 Bryonia alba (Cucurbitaceae)
- CH 768 Ficus indica (Urticaceae)
- CH 769 Hyoscyamus (Solanaceae)
- CH 770 Chelidonium majus (Papaveraceae)
- CH 771 Digitalis purpurea (Scrophulariaceae)
- CH 772 Calendula officinalis (Compositac)
- CH 773 Ignatia amara (Loganaceae)
- CH 774 Belladonna (Solanaceae)
- CH 775 Stramonium (Solanaceae)
- CH 221 Plant Anatomy Part I Simple Tissues; Parenchyma Collenchyma & Sclerenchyma
- CH 222 Plant Anatomy Part II Complex Tissues; Xylem
- CH 223 Plant Anatomy Part III Complex Tissues; Phloem
- CH 233 Brassica Campestris (Mustard)
- CH 238 *Althaea rosea* (Holly Hock)
- CH 239 *Hibiscus rosa sinensis* (Shoe Flower)
- CH 240 *Gossypium herbaceum*
- CH 241 *Citrus aurantium* (Rutaceae)
- CH 269 *Avena sativa* (Oat)
- CH 270 *Zea mays* (Maize)
- CH 273 *Triticum vulgare* (Wheat)

PLANT PATHOLOGY

- CH 104 Plant Diseases : Bacterial & Viral
- CH 105 Plant Diseases: Fungal

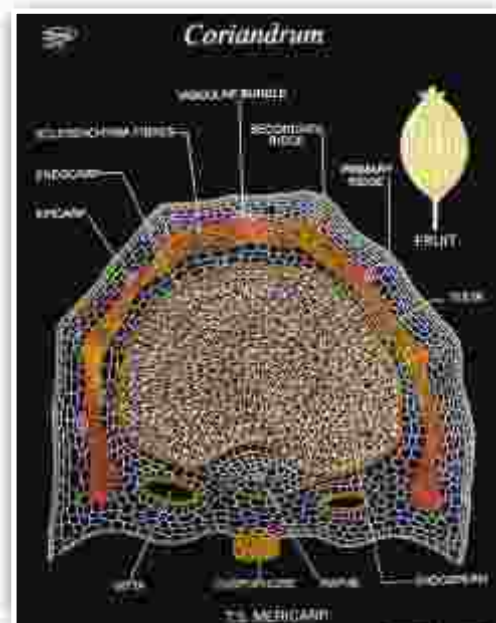
MEDICINAL PLANTS

- CH 106 Medicinal Plants-I (Exported from India)
- CH 107 Medicinal Plants-II (Imported in India)
- CH 108 Medicinal Plants-III (Endangered Species)
- CH 109 Medicinal Plants-IV (Prohibited to Export from India)

Charts size 75x100cms. On Black / White Raxine

Pharmaceutical Chemistry 24 CHARTS

- *CH 877 Periodic Tables of the Elements
- *CH 877A Jumbo Periodic Table (48"x60")
- CH 877B Mendeleev Periodic Table
- CH 878 Shapes of atomic Orbitals
- CH 879 Relative Energies of Orbitals
- CH 880 Formation of Molecular orbitals
- CH 886 Structure of Ionic Solids
- CH 872 Types of Crystal Structure
- CH 888 3D Arrangement in Solids
- CH 893 Estimation of Nitrogen
- CH 894 Determination of Molecular Mass
- CH 869 Nuclear Fission and Fusion
- CH 896 Extraction of Metals
- CH 923 Distillation
- CH 927 Principles of Extraction
- CH 929 Corrosion
- CH 930 Lattice Defects
- CH 934 Chromatography
- CH 936 Acids, Bases & Salts
- CH 939 First Aid in Laboratory
- CH 940 Lab. Safety Measures
- CH 941 Techniques used in Laboratory
- CH 946 Food Test Chemical
- CH 944 Laboratory Equipments



CH 713

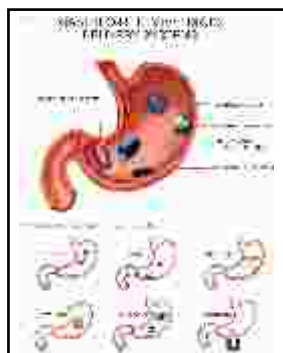
Red Colored Charts on White Raxine.

Pharma

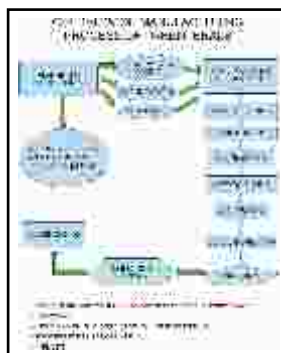
PHARMACEUTICS CHARTS

The Following charts are available on Superfine Black Raxine which are waterproof and fitted with light weight plastic rollers. as per A.I.C.T.E. requirement .

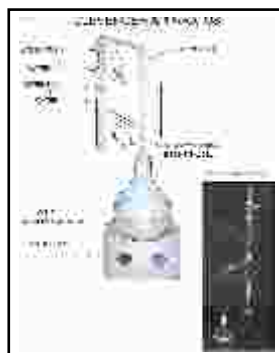
Size 30"X40" Approx / White Raxine



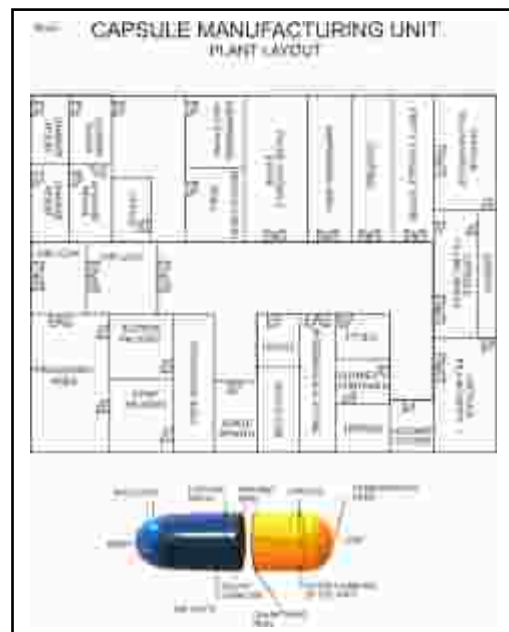
CH 765



CH 777



CH 792



CH 784

- CH 756 Type of Dosage Forms
- CH 757 Over the Counter Drug
- CH 758 Layout of Drug Store
- CH 759 Layout of Hospital Pharmacy
- CH 760 Common Drug Interactions
- CH 761 Therapeutic Drug Monitoring
- CH 762 Prescription
- CH 763 Pelletisation Techniques
- CH 764 Drug Distribution System
- CH 765 Gastro Retentive Drug Delivery System
- CH 766 Transdermal Drug Delivery Systems
- CH 776 Drug Absorption
- CH 777 Manufacturing Process of Parentals
- CH 778 Test for Glass - Water Attack test
- CH 779 Test for Glass - Arsenic Test
- CH 780 Types of Flow and Rheogram
- CH 781 Abbe's Refractometer
- CH 782 Types of Viscometer
- CH 783 ICH Process of Harmonisation
- CH 784 Capsule Manufacturing unit
- CH 785 Tablet Coating Equipment
- CH 786 Instrumentation of polarimeter
- CH 787 Investigational New Drug Application
- CH 788 New Drug Application in India
- CH 789 New Drug Application : Process
- CH 790 Organisation of CDSCO
- CH 791 Regulatory authority of Different countries
- CH 792 Fire Extinguisher
- CH 793 Chemical Hazard Symbols
- CH 794 Elements of Quality by design (QbD)
- CH 795 Implantable Drug Delivery System
- CH 796 Isolation of Oil
- CH 797 Plant extraction techniques

*Red Colored Charts on White Raxine

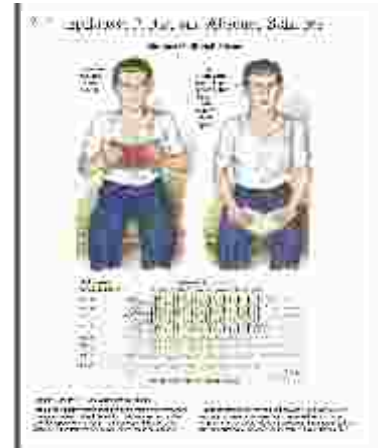
Pharmacognosy Charts

These Dbios Pharmacology Charts are rare collection of vivid depictions of pharmacology topic as per mentioned in A.I.C.T.E. Syllabus.

Pharmacotherapeutics CHARTS

Size 30"X40"Approx / White Raxine

- | | | | |
|-----------|---|----------|-----------------------------------|
| Dphc 2C | Anti-epileptics drugs. | Dphc 209 | Heart Failure Overview |
| Dphc 3B | Antihypertensive drugs. | Dphc 210 | Heart Failure Treatment |
| Dphc 3C. | Antianginal and Vasodilator drugs. | Dphc 218 | Hypertension Overview |
| DPhc 03E. | Antihyperlipedimic drugs | Dphc 220 | Hypertension Treatment: Diuretics |
| Dphc 48 | Drug Administration from application to distribution in the body | Dphc 259 | Type 2 Diabetes Mellitus |
| DPhc 49 | Drug administration dosage forms for parental, pulmonary, rectal or vaginal and cutaneous application | Dphc 311 | Introduction to Asthma |
| DPhc 50 | Drug administration dosage forms for oral, ocular and nasal applications | Dphc 314 | Asthma Pharmacotherapy |
| Dphc 59a | Action of Benzodiazepines | Dphc 336 | COPD: General Treatment Measures |
| Dphc 169 | Epilepsy: Partial and Absence Seizures | Dphc 570 | Virilisation will Androgens |
| Dphc 171 | Clinical Depression | | |
| Dphc 183 | Stroke: Symptoms and Drug Treatment | | |
| Dphc 203 | Angina Overview | | |
| Dphc 204 | Nitrates for Angina Treatment: Classes, Administration Routes, Pharmacology and Adverse Effects | | |



Dphc 169

Social Pharmacy

Size 30"X40"Approx / White Raxine

- | | |
|---------|--------------------------------------|
| 09 | Menstrual hygiene Products |
| 33. | Immunization Schedule |
| 71 | Hand Washing |
| FA 05 | Fracture |
| FA 08 | Poisoning (Drug & Alcohol) |
| FA 09 | Poisoning (Food Plant and Fungi) |
| FA 10 | Bite (Snake & Animal) |
| PE-655 | Epilepsy |
| GS 31 | Birth Control |
| CH 44A | Vitamins |
| CH 44B | Weight for Height. |
| CH 44C | Carbohydrates |
| CH 44D | Fats |
| CH 44E | Fibers |
| CH 44F | Minerals |
| CH 44G | Proteins |
| CH 970 | Treatment of water for domestic use. |
| xxxx | Tobacco control |
| xxxx | Glycemic index of food |
| xxxx | Reproductive health - I |
| xxxx | Reproductive health - II |
| CH 1353 | Daily Allowances of Nutrients |



CH 896

Ask for

Medicinal Herbs

Size 12"x18" Laminated Framed on Board

Pharmacology Charts

Size 20" x 26". Laminated and Attached with Durable Strips

Size 20" x 26". Laminated & Framed on NU-Wood Board

Ask for Pharma Slides

Set of 25+25 Total 50

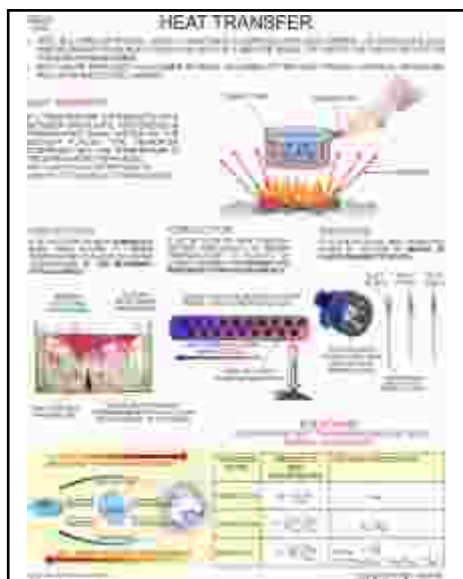
Red Colored Charts on White Raxine.

Rare Collection of Psychology Charts on Page No 1. for University & Colleges

Physics Charts

Charts size 75x100cms. White Raxine

Physics - Total 120 Charts



CH 829

- CH 1063 Stark & Raman Effect
- CH 868 Atomic Reactor
- CH 869 Nuclear Fission & Fusion
- CH 842 Sources of Energy
- CH 844 Work Power Energy
- CH 845 Particle accelerator-Cyclotron
- CH 846 Nuclear Radiation Detectors-I
- CH 846A Nuclear Radiation Detectors-II
- CH 1064 Effects of Radiation on Human

HEAT&THERMODYNAMICS

- CH 828 Structure of Flame
- CH 829 Heat Transfer
- CH 834 Types & Uses of Thermometers
- CH 838 Davison & Germer Experiment
- CH 839 Carnot Cycle
- CH 842 Sources of Energy
- CH 867 Inter Conversion of Energy
- CH 1091 Renewable & Non-Renewable Sources

- Phy 06 Energy Forms
- CH 876 Engines (Internal & External Combustion)
- CH 1065 Thermodynamical Processes
- CH 1066 Calorimeter (Joule's Method)
- CH 1067 Boyle's Law Verification By Quills Tube Method

MODERN PHYSICS

- CH 1068 Verification of Parallelogram & Triangle Law of Forces
- CH 1069 Electron Proton Neutron
- CH 1072 Rutherford Experiment
- CH 1075 Pascal Law
- CH 840 Lasers-Basic Principle
- CH 847 Photoelectric Effect
- CH 848 Origin of X-Rays
- CH 1059 Holography
- CH 1070 Compton's Effect
- CH 1071 Basic Laser Device & Action
- CH 1073 Lasers-Types
- CH 1074 Michelson - Morley Experiment

ELECTRICITY & MAGNETISM

- CH 833 Uses of Electricity in Daily Life
- CH 849 Ohm's Law
- CH 859 Kirchoff's Laws
- CH 870 Magnet & its Properties
- CH 871 Electro magnetic Induction
- CH 1076 Electric Current
- CH 1077 Domestic Electric Circuit
- CH 1078 Simple Electric Circuit
- CH 1079 Electro Magnetic Spectrum
- Phy 07 Static Electricity
- Phy 08 Motor
- Phy 09 Generator
- CH 1080 AC Circuits
- CH 1081 Magnetic Circuits
- CH 1082 Hysteresis Curve
- CH 1083 Maxwell's Equations
- CH 1084 Hall Effect
- CH 1085 Hydro Electric Power Project (DAM)

SOLID STATE PHYSICS

- CH 872 Types of Crystal Structure
- CH 1088 X-Ray Diffraction & Bragg's Law
- CH 1089 Bragg's Spectrometer

ELECTRONICS

- CH 857 Semi-Conductor-I
- CH 858 Semi-Conductor-II

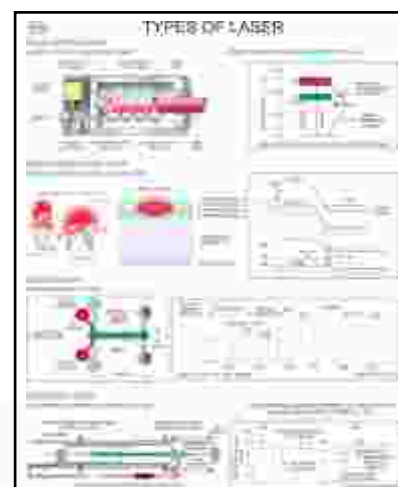
- CH 860 Oscillators
- CH 861 Logic Gates
- CH 862 Transistor characteristic
- CH 863 Triode Characteristics
- CH 864 Rectifiers
- CH 865 Electronic Symbols-I
- CH 866 Electronics Symbols-II
- CH 1517 Diac & Triac
- CH 1519 Feedback amplifiers
- CH 1520 Multistage amplifiers
- CH 1521 O.P. amplifiers
- CH 1523 Diodes-I
- CH 1524 Diodes-II
- CH 1525 Transformers
- CH 1526 Dynamos
- CH 1535 Flip Flops : SRTD
- CH 1536 Flip Flops : JK Master Slave
- CH 1537 Shift Register Types
- CH 1539 ADC Techniques
- CH 1540 DAC Techniques
- CH 1529 Cathode Ray Oscilloscope
- CH 1092 Solar Cell
- CH 1093 Micrometer

SPACE / COMMUNICATIONS

- CH 1095 The Solar System
- CH 1096 Solar & Lunar Eclipses
- CH 1097 Galaxies
- CH 1503 Frequency Modulation
- CH 1507 Satellite Communications
- CH 1508 Electromagnetic Frequency Spectrum
- CH 1546 Digital Modulation

MICROPROCESSORS

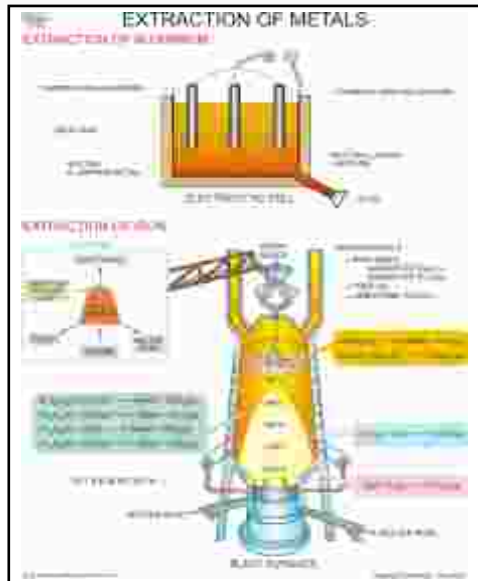
- CH 1510 8085 Block diagram
- CH 1511 8085 Pin layout
- CH 1545A 8086 Instruction set
- CH 1545B 8086 Instruction set
- CH 1513 8255A The Programmable Peripheral Interface
- CH 1514 8155 & 8755 The Programmable Device
- CH 1530 555 Pin diagram & architecture
- CH 1531 555 Multi Vibrators
- CH 1542 8051 Block Diagram
- CH 1543 8051 Instruction set
- CH 1544 8051 SFR. Special Function



CH 1073

Charts size 75x100cms. White Raxine

Chemistry- total 97 Charts



CH 896

- DCM 86. Basic Flash cards for Periodic Table {Especially for High Schools }
 DCM 87. Knowing your Periodic Table & Families { A Fun pack of flash cards Especially for Senior Secondary School}

GENERAL

- CH 877 Periodic Tables of the Elements
 CH 877A Jumbo Periodic Table (48"x60")
 CH 877B Mendeleev Periodic Table
 CH 877C Characteristics of Periodic Table
 CH 877D Newland Octave
 CH 877E Dobereiner's triads
 CH 877F Electron Configuration
 CH 887 Valencies of Elements
 CH 939 First Aid in Laboratory
 CH 940 Laboratory Safety Measures
 CH 941 Laboratory Techniques
 CH 944 Laboratory Equipment

PHYSICAL

- CH 878 Shapes of atomic Orbitals
 CH 879 Relative Energies of Orbitals
 CH 880 Formation of Molecular orbitals
 CH 881 Geometry of Molecules - I
 CH 882 Geometry of Molecules - II
 CH 886 Structure of Ionic Solids
 CH 872 Types of Crystal Structure
 CH 888 3D Arrangement in Solids
 CH 907 Types of Cells
 CH 909 Separation of Substances
 CH 915 Liquefaction of Gases
 CH 930 Lattice Defects

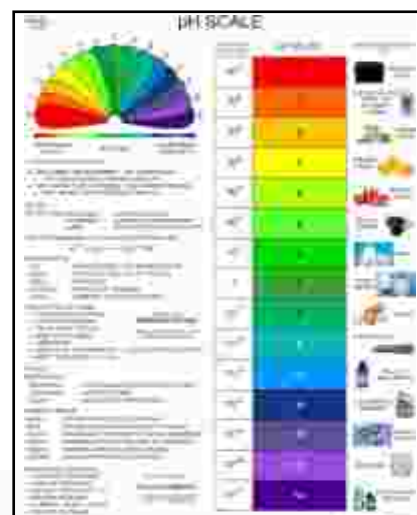
- CH 932 Michaelis Menten Equation
 CH 938 Radioactivity
 CH 1060 Structure of Atom
 CH 868 Atomic Reactor
 CH 869 Nuclear Fission & Fusion
ORGANIC
 CH 883 Hybridisation
 CH 884 Orbital Structure of Benzene
 CH 885A Hydrocarbon
 CH 885 Confirmation in Hydrocarbons
 CH 889 Structural Isomerism Part - I
 CH 890 Structural Isomerism Part - II
 CH 891 Stereoisomerism Part - I
 CH 892 Stereoisomerism Part - II
 CH 895 Fuel & its Calorific value
 CH 897 Refining of Petroleum
 CH 926 Preparation of CH_4 , C_2H_4 & C_2H_2
 CH 934 Chromatography

INORGANIC

- CH 893 Estimation of Nitrogen
 CH 894 Determination of Molecular Mass
 CH 898 Preparation of Oxygen
 CH 899 Preparation of Hydrogen
 CH 900 Preparation of Nitric Acid
 CH 901 Manufacture of Ammonia
 CH 902 Manufacture of Sulphuric Acid
 CH 903 Preparation of Carbon Dioxide
 CH 904 Preparation of Hydrochloric Acid
 CH 908 Preparation of Alums
 CH 896 Extraction of Metals
 CH 905 Extraction of Aluminium
 CH 906 Extraction of Copper
 CH 910 Mohr's Solution
 CH 911 Reactivity series
 CH 912 Oxidation & Reduction
 CH 913 Chemical Reactions
 CH 914 Redox Titration
 CH 919 Alcohol
 CH 920 Extraction of Iron
 CH 922 Carbonate Vs Bicarbonate
 CH 923 Distillation
 CH 924 Soap Manufacturing
 CH 925 Functional Groups
 CH 927 Principle of Extraction
 CH 931 Acid - Base Titration
 CH 933 Salt Analysis Flow Chart
 CH 936 pH Scale: Acid, Bases, Salts
 CH 937 Electrolysis
 CH 942 Chemical Bonding
 CH 943 Manufacturing of Cement
 CH 945 Organo-metallic Compounds
 CH 946 Chemical Analysis of food Articles

- CH 947 Manufacturing of Glass
 CH 948 Manufacturing of NaOH
COLLEGE LEVEL
 CH 845 Particle accelerator-Cyclotron
 CH 846 Nuclear Radiation Detectors-I
 CH 846A Nuclear Radiation Detectors-II
 CH 917 Synthetic Polymers
 CH 918 Natural & Synthetic Rubbers
 CH 929 Corrosion
 CH 935 Synthetic Dyes

- CH 951 Phase diagram of one component system
 CH 952 Phase diagram of two component system
 CH 953 Boiler Problems
 CH 954 Softening of water
 CH 955 Desalination of water
 CH 956 Corrosion control
 CH 957 Types of Mechanism of Corrosion
 CH 957A Additives for Lubricants
 CH 958 Physical Properties of Lubricants
 CH 959 Chemical Properties of Lubricants
 CH 960 Polymer Composites
 CH 961 Titrimetric Methods of Analysis
 CH 962 Determination of Alkalinity of Water
 CH 963 Determination of Hardness by EDTA Method
 CH 964 Determination of Viscosity by Red Wood Viscometer
 CH 965 Determination of Flash point by Pensky Martin's Apparatus
 CH 966 Preparation of Urea
 CH 967 Preparation of Phenol
 CH 969 Formaldehyde Resin
 CH 969 Municipal Water Treatment
 CH 970 Treatment of water for domestic use.
 CH 971 Types of Mechanism of Corrosion
 CH 972 Types of Electrochemical Corrosion
 CH 973 Mechanism of Lubrication
 CHEM 01 Allotropes of Carbon
 CHEM 02 Mole Concept



CH 936

Red Colored Charts on White Raxine.

Fundamental, Clinical, Pediatric Lab, Community Lab Charts

Scientists Charts

Laminated Framed on Board

Small Size 12"x18" OR MEDIUM SIZE 20"x26"

BIG CHARTS 30"x40"
SYNTHETIC LAMINATED &
ATTACHED WITH PLASTIC ROLLERS

BIOLOGIST

- SB 01 Lammak Jean Baptist
- SB 02 Charles Robert Darwin
- SB 03 Gregor John Mendel
- SB 04 Louis Pasteur
- SB 05 P. Maheswari
- SB 07 Birbal Sahni
- SB 08 Aristotle
- SB 09 Alexander Fleming
- SB 10 Jagdish Chander Bose
- SB 11 Theophrastus
- SB 12 Ernst Haeckel
- SB 29 H.G. Khorana
- SB 30 Salim Ali
- SB 48 George Bentham
- SB 49 Carl Von Linnaeus
- SB 50 Hugo De-Vries
- SB 59 James Watson & Crick
- SB 60 Robert Hook
- SB 61 M.S. Swaminathan
- SB 62 Dr. Lalji Singh
- SB 63 Yellapragada Subba Rao
- SB 64 Samir K. Brahmachari
- SB 65 Robert Koch
- SB 66 William Harvey
- SB 67 Marcello Malpigli
- SB 68 Leeuwenhock Antonvan
- SB 69 John Cray Ventor
- SB 70 Ingo Potrykus & Peter Beyer
- SB 71 Norman Ernest Borlaug
- SB 72 Paul Berg
- SB 73 Anandibai Joshi
- SB 74 Janaki Ammal
- SB 75 Robert Harding Whittaker

PHYSICIST

- SP 12 Maghnath Saha
- SP 13 Galileo Galilei
- SP 14 Issac Newton
- SP 15 Sir C.V. Raman
- SP 16 Homi Jehangir Bhabha
- SP 17 J.J. Thompson
- SP 18 Neils Bohr
- SP 20 Archimedes
- SP 23 Albert Einstein
- SP 31 Ernest Rutherford
- SP 40 Dr. Vikram Sarabhai
- SP 41 K.S. Krishnan
- SP 44 A.P.J. Abdul Kalam
- SP 45 Robert Andrews Millikan
- SP 46 Thomas Alva Edison
- SP 67 Arthur Compton
- SP 68 Louis de broglie
- SP 69 Werner Heisenberg
- SP 70 Raja Ramanna
- SP 71 Stephen William Hawkins
- SP 72 Rakesh Sharma
- SP 73 Max Planck
- SP 74 James Clark Maxwell
- SP 75 Wilhelm Roentgen
- SP 76 James Joule
- SP 77 Johnnes Keppler
- SP 78 Copernicus
- SP 79 Ptolemy
- SP 80 Heike K. Onnes
- SP 81 S. Chandrasekar
- SP 82 Satyander Nath Bose
- SP 83 Benjamin Franklin
- SP 85 Edward Victor Appleton
- SP 86 Aluru Seelin Kiran Kumar

CHEMIST

- SC 24 Madam Curie
- SC 25 Friedrich Wohler
- SC 26 John Dalton
- SC 27 Gibert Newton Lewis
- SC 28 Dimitri I. Mendeleev
- SC 30 Michael Faraday
- SC 32 Alfred Nobel
- SC 35 Dr. S.S. Bhatnagar
- SC 36 Joseph Priestley
- SC 37 Humphry Davy
- SC 39 Venky Ramakrishnan
- SC 82 Antoine-Laurent de Lavoisier
- SC 84 Emil fisher
- SC 85 Robert Boyle
- SC 86 J.J. Berzelius
- SC 87 Henry Bacqueral
- SC 88 F.A. Kekule
- SC 89 Avogadro
- SC 90 James Chadwick
- SC 91 Robert Bunsen
- SC 92 Fritz Haber
- SC 93 Hermann Staudinger
- SC 94 Willard Libby
- SC 95 Linus Pauling
- SC 96 Hans Krebs
- SC 97 Stanley Miller
- SC 98 John Fenn
- SC 99 E.D. Jemmis
- SC 100 P.C. Ray
- SC 101 Wilhelm Ostwald
- SC 102 C.N.R. Rao

MATHEMATICIAN

- SP 14 Issac Newton
- SP 20 Archimedes
- SM 51 S. Ramanujam
- SM 52 Varah Mihir
- SM 53 Pascal
- SM 54 Pythagoras
- SM 55 Euclid
- SM 56 Bhasakaracharya
- SM 57 Aryabhata
- SM 58 Euler
- SM 59 C.R. Rao
- SM 60 Anand Kumar
- SM 61 Shakuntala Devi
- SM 62 Claudius Ptolemy
- SM 63 P. V. Sukhatme
- SM 64 Prasanta Chandra Mahalanobis
- SM 65 Sir Ronald Aylmer Fisher
- SM 66 Carl Ritter
- SM 67 Rene Descartes
- SM 68 Joseph Louis Lagrange
- SM 69 Manjul Bhargava
- SM 71 Fra Luca Bartolomeo de Pacioli
- SM 72 Brahmagupta
- SM 73 Georg Cantor
- SM 74 Johann Carl Friedrich Gauss

COMPUTER PIONEER

- SCP 61 Charles Babbage
- SCP 62 Blasis Pascal
- SCP 63 Ada Augusta
- SCP 64 William Gates
- SCP 65 Thomas J Watson
- DCP 17 Dr. Vinton G. Cerf
- DCP 32 Michael Saul Dell
- DCP 35 N.R. Narayana Murthy
- DCP 43 W. Hewlett & D. Packard
- DCP 47 Larry Page & Sergey Brin
- DCP 48 Mark Elliot Zuckerberg

GEOGRAPHY

- SG 01 Alexander Von Humboldt
- SG 02 Vasily Dokuchaev
- SG 03 Nil Ratan Dhar
- SP 13 Galileo Galilei
- SP 14 Issac Newton
- SP 40 Dr. Vikram Sarabhai
- SP 78 Copernicus
- SP 79 Ptolemy
- SM 52 Varah Mihir
- SM 56 Bhasakaracharya
- SM 57 Aryabhata
- SM 62 Claudius Ptolemy
- DCE 24 Karl Von Terzaghi
- DCE 25 Reelph Brazeltion Ton Peck
- DCE 26 Sir Alec Wesley Skempton

WRITERS

- DW 1 Aeosop
- DW 2 Kalidasa
- DW 3 Tulsidas
- DW 4 Shakespeare
- DW 5 John Milton
- DW 6 P.B. Shelly
- DW 7 Robert Lee Frost
- DW 8 Thomas Hardy
- DW 9 Charles Dickens
- DW 10 Leo Tolstoy
- DW 11 Tagore
- DW 12 William Wordsworth
- DW 13 T. S. Eliot
- DW 14 William Blake
- DW 15 John Keats
- DW 16 Kabir
- DW 17 Ruskin Bond
- DW 18 Mulkraj Anand
- DW 19 Mahadevi Verma
- DW 20 Sumitranandan Pant
- DW 21 G.B. Shaw
- DW 22 Munshi Premchand
- DW 23 Khushwant Singh
- DW 24 Suzanna Arundhati Roy
- DW 25 David Crystal BFAFLSW
- DW 26 G. Sankara Kurup

- DW 27 Madath Thekkepaattu
- Vasudevan Nair
- DW 28 Ottaplakkal Neelakandan
- Velu Kurup
- DW 29 Sankaran Kutty Pottekkatt
- DW 30 Sree narayana guru
- DW 31 Thakazhi Sivasankara Pillai
- DW 32 Samuel Langhorne Clemens (Mark Twain)
- DW 33 Rasipuram Krishnaswamiyer
- Narayanaswami
- DW 34 Joanne Rowling
- DW 35 Martin Luther King
- DW 36 Anita desai
- DW 37 Smrat Ashok
- DW 38 Dada Bhai Naoroji
- DW 39 Adi Sankaracharya
- DW 40 Ved Vyas

ARTISTS

- DA 1 Sobha Singh (Painter)
- DA 2 Amrita Shergil
- DA 3 Bhimsen Joshi
- DA 4 B. B. Mukharjee
- DA 5 Leonardo
- DA 6 M.S. Subbulakshmi
- DA 7 M. B. Krishna
- DA 8 Michelangelo
- DA 9 Pablo Diego Jose
- DA 10 Paul Cezanne
- DA 11 Raja Ravi Varma
- DA 12 Irayimman Thampi
- DA 13 Shadkala Govinda Marar
- DA 14 Sri Swathi Thirunal Rama Varma
- DA 15 Van Gogh
- DA 16 Meerabai



Laminated Framed on Board

Small Size 12"x18" OR MEDIUM SIZE 20"x26"

LIBRARY SECTION

- DL 1 Dr. S. R. Ranganathan (Librarian)
- DL31 Melvil Dewey (Librarian)
- DL 2 Mother Teresa
- DL 3 Kalpana Chawla
- DL 4 Dr. Bhimrao Ambedkar
- DL 5 M.K. Gandhi
- DL 6 Dr. Sarvepalli Radhakrishnan
- DL 7 Rajaram Mohan Roy
- DL 8 Rabindernath Tagore
- DL 9 Swami Vivekananda
- DL10 Ishwar Chander Vidhyasagar
- DL11 Acharya Prafulla Chandra Roy
- DL12 Swami Dayananda Saraswati
- DL13 Subhas Chander Bose
- DL14 Sorojini Naidu
- DL15 Sardar Vallabhbhai Patel
- DL16 Mulana Abul Kalam Ahmed
- DL17 Guru Nanak Dev Ji
- DL18 Guru Gobind Singh Ji
- DL19 Chandra Shekhar Azad
- DL20 Gautam Buddha
- DL21 Bharat Mata
- DL22 Shaheed Bhagat Singh
- DL23 Chhatrapati Shri Shivaji Maharaj
- DL24 Lord Dhanwantri
- DL25 Maa Saraswati
- DL26 Saint Alphonsa Muttathupadathu
- DL27 Geevarghese Mar Ivanios
- DL28 Jean Henri Dunant
- DL29 Johan Galtung
- DL30 Paul Percy Harris
- DL 31 Maharana Pratap
- DL 32 Bal Gangadhar Tilak
- DL 33 Jotirao Govindrao Phule
- DL 34 Karmaveer Bhaurao Patil
- DL 35 Vinayak Damodar Savarkar

BEHAVIOURS

1. Code of Behaviour
2. Good Manners
3. Good People Skills
4. Good Social Skills
5. Good Values
6. The Behaviour Wheel.

PRIME MINISTER OF INDIA

ALL PRIME MINISTERS IN ONE
BIG (30X40") CHART

1. Jawahar Lal Nehru
2. Gulzari Lal Nanda
3. Lal Bahadur Shastri
4. Indira Gandhi
5. Morarji Desai
6. Chaudhary Charan Singh
7. Rajiv Gandhi
8. V.P. Singh
9. Chandra Shekhar
10. P.V. Narasinha Rao
11. H.D. Devegawda
12. I.K. Gujral
13. A.B. Vajpajee
14. Manmohan Singh
15. Narendra Modi

PRESIDENT OF INDIA

ALL PRESIDENT IN ONE
BIG (30X40") CHART

1. Dr. Rajinder Prasad
2. S. Radhakrishnan
3. Dr. Zakir Hussain
4. V.V. Giri
5. Fakhruddin Ali Ahmed
6. Neelam Sanjiva Reddy
7. Giani Zail Singh
8. R. Venkataraman
9. Dr. Shankar Dayal Sharma
10. K.R. Narayanan
11. A.P.J. Abdul kalam
12. Pratibha Devisingh Patil
13. Pranab Mukherjee
14. Ram Nath Kovind
15. Smt. Droupadi Murmu

MANAGEMENT PERSONALITIES

1. Sam Walton
2. Warren Buffet
3. Lee Jaeocca
4. Steve Jobs
5. Andy Grove
6. Ted Turner
7. Jeff Bezos
8. Michael Gibner
9. Peter Lynch
10. Phil Knight
11. Katharine Graham
12. W. Edwards Deming
13. Lou Gerstner
14. Adam Smith
15. Amartya Sen
16. Bhai Mohan Singh
17. C.K. Prahalad
18. Claude Elwood Shannon
19. Dhirubhai Ambani
20. G.D. Birla
21. Henri Fayol
22. Indira Nooyi
23. J.M. Keyner
24. Jack welch
25. J.R.D. Tata
26. Lakshmi Mittal
27. Margret Cushing
28. Peter Drucker
29. Philip Kotler
30. Shiv Khera
31. Stephen R.Covey
32. Sumantra Ghoshal
- SM 70 Bhavish Aggarwal

BIG CHARTS 30"x40"
SYNTHETIC LAMINATED &
ATTACHED WITH PLASTIC ROLLERS

SPORTS PERSONALITIES

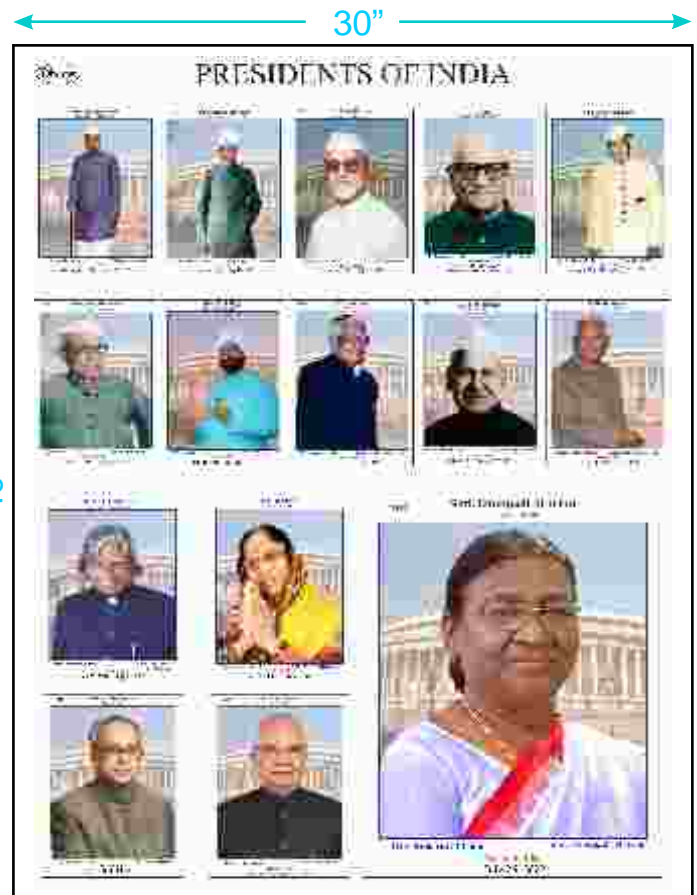
1. Sania Mirza
2. Saina Nehwal
3. Sachin Tendulkar
4. Pankaj Advani
5. P.T. Usha
6. Viswanathan Anand
7. Major Dhyan Chand
8. Baichung Bhutia
9. Mary Kom
10. Milkha Singh
11. MS Dhoni

- BgC 1 Famous Indian Scientists
- BgC 2 Great Indian Scientists
- BgC 3 Pioneers in Chemistry
- BgC 4 Pioneers in Biology
- BgC 5 Pioneers in Physics
- BgC 6 Prime Ministers of India
- BgC 7 President of India

CHIEF MINISTER OF INDIAN STATES

1. Sheikh Abdulla
2. Farooq Abdulla
3. Oomar Abdulla
4. Yogi Adityanath
6. Bhupinder Singh Hooda
7. Prakash Singh Badal
8. Virbhadra Singh
9. Manohar Lal Khattar

- BgC 8 Computer Pioneers
- BgC 9 Famous Writers
- BgC 10 Famous Mathematician
- BgC 11 Famous Artist
- BgC 12 Sports Personalty
- BgC 13 Indian Nobel Prize Winners
- BgC 14 Bharat Ratan I
- BgC 15 Bharat Ratan II
- BgC 16 Bharat Ratan III
- BgC 17 Bharat Ratan IV
- BgC 18 Bharat Ratan V
- BgC 19 Bharat Ratan VI
- BgC 20 Bharat Ratan VII
- BgC 21 Bharat Ratan VIII



Ask for Motivational Charts
NOBEL PRIZE WINNER

Scientists / Leaders other than above mentioned list can be made available

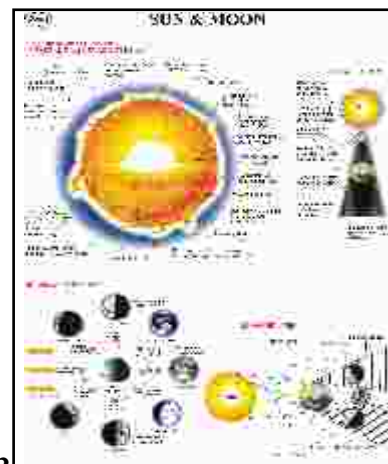
Geography Charts

Geography- TOTAL 31 Charts

DGM 01	National Parks And Natural Habitats	CH 541	Life cycle of a Star
DGM 02	Indian Map	DG 2.	Stars
DAG 01	Types of Soil	CH 542	Constellation
CH 530A	Soil Testing	CH 56	Ozone Layer
CH 530	Soil Profile	CH 57	Green House Effect
CH 531	Life cycle of Rock	CH 58	Seasons
CH 532	Volcano & its types	CH 60	Water Cycle
CH 533	Weathering & Erosion	CH 1095	Solar System
CH 534	Formation of Himalayas	DG 5.	Planets
CH 535	Earthquakes	CH 1096	Solar & Lunar Eclipse
CH 536	Glaciers	DG 4.	Sun & Moon
CH 537	Development of River	CH 1097	Galaxies
CH 538	Structure of earth	CH 2471	Rocks & Minerals
DG 6.	Pre Historic earth	DG 16.	Earth's Coordinates and Map Projections
DG 11.	Formation of coal	DG 20.	Vegetation and Biosphere
CH 539	Geological time scale		
DG 8.	Dinosaurs		
CH 540	Life cycle of Sun		

Charts size 75x100cms. White Raxine

**Size 50x 65 cms. Laminated and Attached with Durable Strips OR
Size 50x 65 cms. Laminated & Framed on NU-Wood Board**

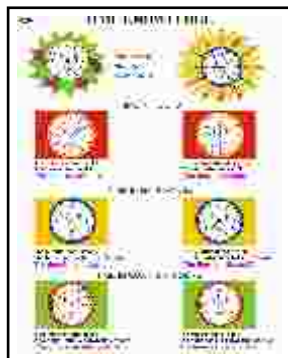


Look for Geography Pioneers at Page No. 13

Math Charts Total 30 Charts

Charts size 75x100cms. White Raxine

**Size 50x 65 cms. Laminated and Attached with Durable Strips OR
Size 50x 65 cms. Laminated & Framed on NU-Wood Board**



DM 09

DM 1.	Units of Measurement	DM 13.	Polygons	DM 24.	Algebra
DM 2.	Areas	DM 14.	Permutation	DM 26.	Angles
DM 3.	Volumes	DM 15.	Angles Sum Property	DM 25.	Logarithms
DM 4.	Surface Areas	DM 16.	Quaratic Equations	DM 27.	Pair of Angles
DM 5.	Number Systems	DM 17.	To Prove Sin (x+y)	DM 28.	Transformation
DM 5A	Geometric Formulas	DM 18.	Venn Diagram	DM 29.	Properties of Circles
DM 6.	Mathematic Symbol	DM 19.	Statistics Graph Display-I		
DM 7.	Trigonometry	DM 20.	Statistics Graph Display-II		
DM 8.	Triangles	DM 21.	Graphing A Line		
DM 9.	Time Knowledge	DM 22.	Fractions		
DM 10.	Shapes	DM 23.	Find the Area of a Circle		
DM 11.	Profit & loss				
DM 12.	Primes & their Factors				

**Look for MATHEMATIC
Pioneers at Page No. 13**

ENGLISH LEARNING CHARTS 41 Charts

**Size 50x 65 cms. Laminated and Attached with Durable Strips OR
Size 50x 65 cms. Laminated & Framed on NU-Wood Board**

CONVERSATION IN ENGLISH

DEN 15	About Weather
DEN 16	Asking Directions
DEN 17	Asking / Telling the Time
DEN 18	In the School
DEN 19	Personal Health/Common Health Problem
DEN 20	Telephonic Conversation
DEN 21	With a Guest at Home

PHONETICS SYMBOLS

DEN 1	Vowels with examples
DEN 2	Consonants with examples
DEN 3	Phonetic Chart

PARTS OF SPEECH

DEN 5	Nouns with examples
DEN 6	Pronouns with examples
DEN 7	Adjectives with examples
DEN 8	Verbs with examples
DEN 9	Adverb with examples
DEN 10	Preposition with examples
DEN 11	Conjunctions with examples

English Professional Combination

DEN 25	Reading Strategies
DEN 26	Traits of Good Writing
DEN 27	When to use Commas
DEN 28	Paragraphs
DEN 29	Persuasive Writing
DEN 30	Punctuation
DEN 31	Suffixes & Prefixes
DEN 32	Qualities of an Engineer
DEN 33	So you think English is easy?
DEN 34	Report Writing
DEN 35	100 Ways to Say "Great"!
DEN 36	Principles of Effective Listening
DEN 37	Group Discussion
DEN 38	Verb Tenses
DEN 39	How to be a Good public speaker
DEN 40	The Communication Process
DEN 41	How to Improve your communication skills"
DEN 42	Types of Life skills
DEN 43	Important Manners
DEN 44	Resilience

DEN 45	Emotional Intelligence
DEN 46	Commonly Confused Words
DEN 47	Phonemic Chart
DEN 48	Telephone Phrasal Verbs
DEN 49	English Parts of Speech



See English Pioneers on Page No.(13)

Computer LEARNING CHARTS (41) Charts

Size 50x 65 cms. Laminated and Attached with Durable Strips OR
Size 50x 65 cms. Laminated & Framed on NU-Wood Board

BASIC COMPUTER

CH 2101	Summary of Dos Commands
CH 2102	Dos Commands
CH 2103	Storage Devices
CH 2104	Memories
CH 2108	Input Devices
CH 2109	Output Devices
CH 2121	Fundamentals of 'C-I
CH 2122	Fundamentals of 'C-II
CH 2123	Fundamentals of 'C-III

NETWORKING

CH 2107	Network Topologies
CH 2110	Modes & Forms of Data Transmission
CH 2111	Transmission Medias
CH 2112	Types of Computer Networks
CH 2113	Communication Switching Techniques

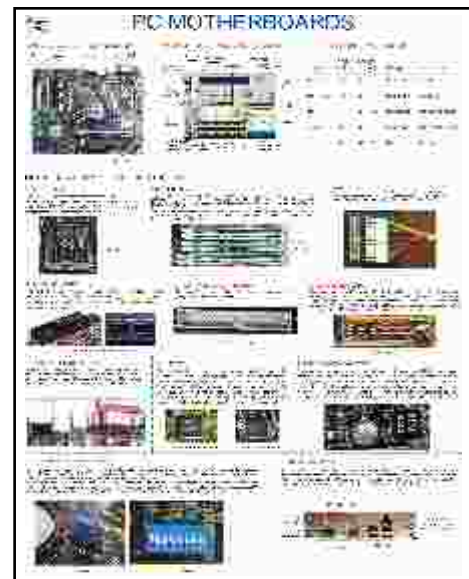
SOFTWARES

CH 2115	Microsoft Word
CH 2116	Microsoft Excel
CH 2117	Microsoft Power Point
CH 2118	The Visual Basic Ide
CH 2119	The Tool Bars of VB
DCH 01	Early Generation Computer.
DCH 02	First Generation Computer.
DCH 03	Second Generation Computer : Transistor.

DCH 04	Third Generation Computer : Post 1960's.
DCH 05	History of Internet.
DCH 10	Computer Lab Safety
SCP 61	Charles Babbage - Father of Computer
SCP 64	William Bill Gates - Founder of Microsoft
DCP 17	Dr. Vinton G. Cerf - Father of Internet

COMPUTER HARDWARE

CH 2180	IDE Interface
CH 2181	Hard Disk Drive
CH 2182	Computer Power Supply
CH 2183	CD Rom Drive
CH 2184	PCPorts & Connectors
CH 2185	Semi Conductor Memories
CH 2186	Backup Power Supply
CH 2187	PC Motherboards
CH 2188	SCSI Interface
CH 2189	Floppy Disk Drive - Architecture & Working
CH 2190	PC Keyboards
CH 2191	PC Mouse
CH 2192	Computer System Buses



CH 2187 PC MOTHERBOARDS
See Computer Pioneers on Page No.(13)

psychology CHARTS (51) Charts

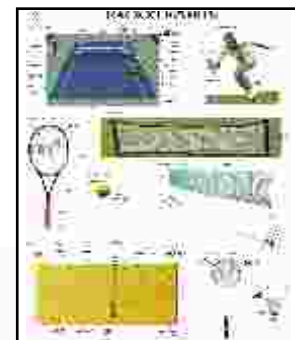
DPsy1	Milestones in the History of Psychology	DPsy26	Comparisons in Psychotherapies
DPsy2	Research Methods in Psychology	Dpsy27	Famous Psychological Experiment
DPsy3	The Neuron and the Synapse	Dpsy28	Piaget's Stages of Cognitive Development
DPsy4	The Resting and Action Potential	DPsy29	Erikson's Stages of Psychosocial Development
DPsy5	Structure and Functions of Human Brain	DPsy30	Kohlberg's Stages of Moral Development
DPsy6	Major Regions of Cerebral Cortex	DPsy31	The Big Five Personality Traits
DPsy7	Central and Peripheral Nervous System	DPsy32	Raymond Cattell's 16 PF
DPsy8	Structure and Functions of Endocrine System	DPsy33	Howard Gardener's Multiple Intelligence
DPsy9	Sensory Receptor Cells	DPsy34	Myers Briggs Chart
DPsy10	Parts of the Eye and Visual Pathways	DPsy35	Enneagram types
DPsy11	Visual Processing in the Split Brain	DPsy36	DSM 5 List of Mental Disorders
DPsy12	The Auditory System	DPsy37	DSM 5 List of Personality Disorders
DPsy13	The Olfactory Sense	DPsy38	The Neural Basis of Speech : One Model
DPsy14	The Receptors for Taste	DPsy39	Reflexes in Newborn
Dpsy15	Craik and Lockhart's Levels of Processing Model of Memory	DPsy40	Milestones in Locomotor Development
	Atkinson and Shiffrin's Model of Memory	DPsy41	Language Development : some Milestones
DPsy17	Baddeley's Working Memory Model	DPsy42	Role of Cognitive Appraisal in Stress
DPsy18	Involvement of Brain in different aspects of Long Term Memory	DPsy43	Optimists and pessimists : Contrasting strategies for Coping with Stress
DPsy19	Role of Autonomic Nervous System in Emotional Arousal and Calming the Body	DPsy44	Cognitive Mechanisms in Depression
DPsy20	Role of Cerebral Hemisphere in Emotions and Psychological Disorder	DPsy45	Bronfenbrenner's Ecological System Theory
DPsy21	James-Lange Theory of Emotion	DPsy46	Overview of Theories of Motivation
DPsy22	Cannon-Bard Theory of Emotion	DPsy47	Maslow's Hierarchy of Needs
DPsy23	Schachter and Singer's Two Factor Theory of Emotion	DPsy48	The Cognitive Model
DPsy24	Approaches to Personality Psychology	DPsy49	Psychology of Colours
Dpsy25	Cognitive Therapy Techniques	DPsy50	Secrets of Happiness
		DPsy51	Stress Management

Music (7) Charts

DMU 1.	Electronic instruments
DMU 2.	Key board instruments
DMU 3.	Musical Notation
DMU 4.	Orchestras
DMU 5.	Percussion Instruments
DMU 6.	Stringed instruments
DMU 7.	Wind instruments

Sports (9) Charts

DS 1.	Athletics
DS 2.	Baseball
DS 3.	Basketball
DS 4.	Cricket
DS 5.	Football
DS 6.	Hockey
DS 7.	Racket Sports
DS 8.	Soccer
DS 9.	Volleyball



See Sports Pioneers on Page No.(13)

Gynecology, Hematology/oncology, Infectious Disease, Nephrology, Neurology, Psychiatry, Surgery

Forestry & Poultry

forestry (46) Charts

Size 50x 65 cms. Laminated and Attached with Durable Strips OR
Size 50x 65 cms. Laminated & Framed on NU-Wood Board

- | | | | | | |
|-------|--|-------|-------------------------------|-------|-------------------------|
| DF 1 | Silviculture and Forestry | DF 20 | Nursery Bed | DF 42 | Types of Leaf Apex |
| DF 2 | Seed year | DF 21 | Method of Transplanting | DF 43 | Types of Leaf Base |
| DF 3 | Patterns of Planting | DF 22 | Calendar of Nursery Operation | DF 44 | Inversion Heterozygote |
| DF 4 | Forest Thinning | DF 23 | Methods of Soil Working | DF 45 | Translocation |
| DF 5 | Distribution of Forest Cover | DF 24 | Seed Rate | DF 46 | Anther & Pollen Culture |
| DF 6 | Important Light Demander, Shade Bearer and Demanding Species | DF 25 | Method of Planting | | |
| DF 7 | Nutrient Uptake and Release | DF 26 | Spacing | | |
| DF 8 | Vegetation in Eastern and Himalayas | DF 27 | Silviculture Systems | | |
| DF 9 | Climate and Forest Types in India | DF 28 | Hand Tools Used in Carpentry | | |
| DF 10 | Forms of Crown | DF 29 | Types of Chisels | | |
| DF 11 | Average Height Growth in Some Species According to Quality | DF 30 | Types of Saws-I | | |
| DF 12 | Site Quality And Diameter at Different Age In Some Species | DF 31 | Types of Saws-II | | |
| DF 13 | Tree Classification In Regular Forests | DF 32 | Carpentry Joints-I | | |
| DF 14 | Causes of Primary Succession | DF 33 | Carpentry Joints-II | | |
| DF 15 | Champion And Seth's Classification of Forests of India | DF 34 | Gross Features of Wood | | |
| DF 16 | Choice of Species:- Site Factors | DF 35 | Defects In Timber | | |
| DF 17 | Purpose of Plantation : Sport Goods | DF 36 | Fungal Defects In Wood | | |
| DF 18 | Fast Growing Indigenous Species | DF 37 | Timber Decay | | |
| DF 19 | Fast Grown Exotic Species | DF 38 | Types of Axes | | |
| | | DF 39 | Logging Instruments | | |
| | | DF 40 | Methods of Sawing Logs | | |
| | | DF 41 | Types of Leaf Margin | | |



DF 21

Poultry (28) Charts

Size 50x 65 cms. Laminated and Attached with Durable Strips OR
Size 50x 65 cms. Laminated & Framed on NU-Wood Board

- | | | | | | |
|----------|---|----------|----------------------------------|----------|----------------------|
| Dpoul 01 | Composition of rations for layers at different age groups | Dpoul 12 | Types of Eggs | Dpoul 25 | Rhode Island Red |
| Dpoul 02 | Composition of Broiler Ration | Dpoul 13 | Different Breeds of Chick | Dpoul 26 | Vanraj |
| Dpoul 03 | Food Habits of Birds | Dpoul 14 | Chick Circulatory System | Dpoul 27 | White Leg Horn |
| Dpoul 04 | Poultry Farm Equipments | Dpoul 15 | Chick Digestive System | Dpoul 28 | Chick Nervous System |
| Dpoul 05 | Poultry House | Dpoul 16 | Chick Reproductive System | | |
| Dpoul 06 | Parts of Chicken & their Combs | Dpoul 17 | Chick Urinogenital System Female | | |
| Dpoul 07 | Body Parts of Chicken | Dpoul 18 | Chick Urinogenital System Male | | |
| Dpoul 08 | Types of Chick Combs | Dpoul 19 | Aseel | | |
| Dpoul 09 | Body Parts of Duck & Turkey | Dpoul 20 | Australorp | | |
| Dpoul 10 | Chick Embryo Development | Dpoul 21 | Bramhas | | |
| Dpoul 11 | Stages of Bird Growth | Dpoul 22 | Giriraj | | |
| | | Dpoul 23 | Minorca | | |
| | | Dpoul 24 | Plymouth Rock | | |



Dpoul 13

Poultry, Animal Husbandary & Agriculture

Size 50x 65 cms. Laminated and Attached with Durable Strips OR
Size 50x 65 cms. Laminated & Framed on NU-Wood Board

ANIMAL HUSBANDARY (46) Charts

- DAH 01 Different Breeds of Cows
- DAH 02 Different Breeds of Buffalo
- DAH 03 Body Parts of Cow
- DAH 04 Bull Reproductive System
- DAH 05 Cow Reproductive System
- DAH 06 Ox Skeleton System
- DAH 07 Methods of Milking & Cross Section of Cow's Udder
- DAH 08 Oestrous cycle for different categories of animals
- DAH 09 Vaccinations schedule for dairy animals
- DAH 10 Dairy cattle shed map for 10 buffaloes/cows & their calves
- DAH 11 Housing System For Animals Head To Head
- DAH 12 Housing System For Animals Tail To Tail
- DAH 13 Composition of concentrate mixture according to level of milk production
- DAH 14 Composition of mineral mixture (without salt) for dairy animals
- DAH 15 Food Habits of Animals
- DAH 16 Appliances of Handling Animals
- DAH 17 Casting of Farm Animals
- DAH 18 Methods of Identification
- DAH 19 Disbudding & Dehorning
- DAH 20 Parasites of Cattle
- DAH 25 Different Breeds of Sheep
- DAH 26 Body Parts of Sheep
- DAH 27 Sheep Digestive System
- DAH 33 Different Breeds of Goat
- DAH 34 Goat Skeleton System
- DAH 35 Stomach of Goat
- DAH 40 Composition of rations for different classes of pigs
- DAH 41 Different Breeds of Pig
- DAH 42 Body Parts of Pig
- DAH 43 Pig Digestive System
- DAH 48 Horse Skeleton System
- DAH 49 Different Types of Larva
- DAH 50 L.H. Silkworm
- DAH 51 Fish Anatomy

CATTLE DISEASE

- Dvet 101 Cattel Anthrax
- Dvet 102 Cattel Black quarter (black-leg)
- Dvet 103 Animals Foot and mouth disease
- Dvet 104 Rabies (Mad dog disease)
- Dvet 105 Blue tongue
- Dvet 106 Sheep Pox
- Dvet 107 Animal Tetanus
- Dvet 108 Animal Johne's Disease
- Dvet 109 Cattle Mastitis
- Dvet 110 Piglet diarrhea or scour
- Dvet 111 Bovine babesiosis (tick fever)
- Dvet 112 Lumpy Skin Disease

Agriculture (45) Charts

- CH 530 Soil Profile
- CH 530a Soil Testing
- DAG 01 Types of Soil
- DAG 02 Different Implements or Cultivation of Field
- DAG 03 Irrigation System
- DAG 04 Meteorological Instrument
- DAG 05 Surveying and Leveling Instrument
- DAG 06 Tools and Implements for Horticultural Crops
- DAG 07 Cereal, Pulses and Oil Seed Crops
- DAG 08 Crops Rabi, Kharif And Summer
- DAG 09 Different Propagation Method
- DAG 10 Mendelian Genetics Monohybrid and Dihybrid Cross
- DAG 11 Plant Deficiency (Macro & Micro-Nutrients)

PLANT PATHOLOGY

- DAG 14 Plant Diseases
- DAG 15 Yellow Mosaic of Beans
- DAG 16 Angular Leaf Spot of Cotton
- DAG 17 Black Spot of Rose
- DAG 18 Citrus Canker
- DAG 19 Downy Mildew of Grapes
- DAG 20 Leaf Blight of Potato
- DAG 21 Little Leaf of Tomato
- DAG 22 Mango Disease
- DAG 23 Oily Spot of Pomegranate
- DAG 24 Okra Pickles by Telethon
- DAG 25 Papaya Curl Leaves
- DAG 26 Red Rust of Wheat
- DAG 27 Rust of Wheat
- DAG 28 Sandal Spikes
- DAG 29 Tikka Disease of Groundnut
- DAG 30 Tomato Curl Leaves
- DAG 31 Blast of Rice
- DAG 32 Coffee Rust
- DAG 33 Grain Smut of Sorghum
- DAG 34 Koleroga
- DAG 35 Red Rot of Sugarcane

FRUITS

- DAG 40 Fruits, Vegetables and Flower Crops
- DAG 41 Major Exports Fruits & Vegetable
- DAG 42 Major Exotic Fruits & Vegetable
- DAG 43 Different Varieties of Mangos
- DAG 44 Different Varieties of Bananas
- DAG 45 Different Varieties of Chikkoo
- DAG 46 Type of Pruning in Fruits Crops
- DAG 47 Fruit Preservation Methods
- DAG 48 Recipe of Jam, Jellies, Marmalade
- DAG 49 Recipe of Ketchup
- DAG 50 Recipe of Pickles
- DAG 51 Food preservation



Dvet 109



DAG 09

Veterinary chart

Size 50x 65 cms. Laminated and Attached with Durable Strips OR
Size 50x 65 cms. Laminated & Framed on NU-Wood Board

THE DOG

- Dvet 11 Different Breeds of Dog
- Dvet 12 Body parts of Dog
- Dvet 13 Body regions of Dog
- Dvet 14 Skeleton system of Dog
- Dvet 15 Muscles of Dog
- Dvet 16 Deep cervical muscles of Dog
- Dvet 17 Paws of Dog
- Dvet 18 Head of Dog
- Dvet 19 Eye of Dog
- Dvet 20 Nose of Dog
- Dvet 21 Ear of Dog
- Dvet 22 Mouth of Dog
- Dvet 23 Digestive organs of Dog
- Dvet 24 Thoracic, abdominal and pelvic viscera of Dog
- Dvet 25 Body cavities and Hip joint of Dog
- Dvet 26 Location of major endocrine organs
- Dvet 27 Reproductive organs of the dog
- Dvet 28 Circulatory System of Dog
- Dvet 29 Lymph nodes and vessels of Dog
- Dvet 30 Nervous System of Dog
- Dvet 31 Brain of Dog

THE CAT

- Dvet 36 Different Breeds of Cat
- Dvet 37 Body regions of Cat
- Dvet 38 Skeleton system of Cat
- Dvet 39 Muscles of Cat
- Dvet 40 Deep cervical muscles of the Cat
- Dvet 41 Head of Cat
- Dvet 42 Mouth of Cat
- Dvet 43 Ear of Cat
- Dvet 44 Eye of Cat
- Dvet 45 Digestive organs of Cat
- Dvet 46 Paw of Cat
- Dvet 47 Thoracic, abdominal and pelvic viscera of Cat
- Dvet 48 Reproductive organs of the Cat
- Dvet 49 Circulatory System of Cat
- Dvet 50 Endocrine organs of Cat
- Dvet 51 Nervous System of Cat
- Dvet 52 Brain of Cat

THE RABBIT

- Dvet 56 Body parts of Rabbit
- Dvet 57 Skeleton system of Rabbit
- Dvet 58 Muscles of the Rabbit
- Dvet 59 Oral cavity, tongue, pharynx and esophagus of Rabbit
- Dvet 60 Thoracic, abdominal and pelvic viscera (in situ) of the Rabbit
- Dvet 61 Reproductive organs of the Rabbit
- Dvet 62 Endocrine organs and lymph nodes
- Dvet 63 Nervous system of Rabbit
- Dvet 64 Brain of Rabbit

The RAT

- Dvet 68 Body parts of Rat
- Dvet 69 Skeleton System of Rat
- Dvet 70 Muscles of the Rat
- Dvet 71 Head of Rat
- Dvet 72 Digestive orgabgs of Rat

- Dvet 73 Thoracic, abdominal and pelvic viscera of Rat
- Dvet 74 Reproductive organs of the Rat
- Dvet 75 Nervous system of Rat
- Dvet 76 Brain of Rat

THE GUINEA PIG

- Dvet 81 Body parts of Guinea Pig
- Dvet 82 Skeleton system of Guinea Pig
- Dvet 83 Muscles of the Guinea Pig
- Dvet 84 Head of Guinea Pig
- Dvet 85 Digestive organs of Guinea Pig
- Dvet 86 Thoracic, abdominal and pelvic viscera of Guinea Pig
- Dvet 87 Reproductive organs of Guinea Pig
- Dvet 88 Nervous system of Guinea Pig
- Dvet 89 Brain of Guinea Pig



Dvet 11



Dvet 36

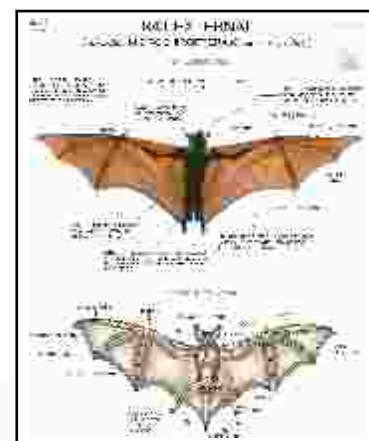
Specimen Charts -26Charts

Charts size 75x100cms. On Black / White Raxine

As you are aware these days, Specimen are banned. So Dbios introduces new chart series for specimen especially Banned

- | | |
|--------------------------------------|---|
| CH 334 Earthworm External Characters | CH 395 Starfish (Asterias) Ext.characters & Anatomy |
| CH 343 Leech External | CH 401 Scoliodon External Characters |
| CH 344 Neries | CH 412 Labeo rohita External Characters |
| CH 356 Housefly L.H | CH 415 Amphioxus External Characters |
| CH 359 Honey Bee L.H. | CH 422B Herdmania External |
| CH 360 Silkworm L.H. | CH 425 Frog External Characters |
| CH 361 Grasshopper L.H. | CH 450 Chamaleon |
| CH 363 Cockroach External Character | CH 461 Snake Types |
| CH 370 Prawn External Anatomy | CH 462 Lizard External & Internal |
| CH 376 Scorpion External character | CH 484 Bat |
| CH 377 Spider | CH 527 Classification Chordates |
| CH 378 Millepede | CH 485 Rat External Characters |
| CH 380 Pila External Characters | |
| CH 387 Unio External Characters | |

New Addition

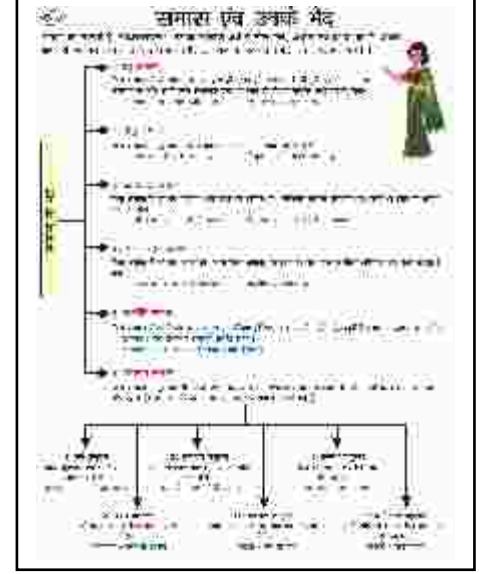


CH 484 Bat

Hindi charts (13) charts

- DA 01 I ekl , @ muds Hksn
 DA 02 v0; ; , @ muds Hksn
 DA 03 mil xZ & iR; ; A
 DA 04 I b/k , @ muds Hksn
 DA 05 Loj I fu/k , oa muds HksnA
 DA 06 okD; , @ muds Hksn
 DA 07 I ozuke , @ muds Hksn
 DA 08 o.kēkyk , @ muds mPpkj .k LfkkuA
 DA 09 fojke fpgu
 DA 10 i ncak , @ muds Hksn
 DA 11 'kCn , @ muds Hksn
 DA 12 I Kk , @ muds Hksn

Size 50x 65 cms. Laminated and Attached with Durable Strips OR
 Size 50x 65 cms. Laminated & Framed on NU-Wood Board

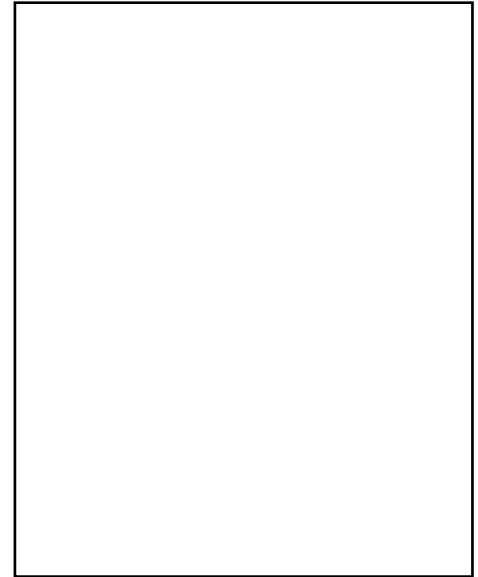


DA 01

sanskrit CHARTS (46) Charts

- Dskt 01 I bdr mPpkj .k LfkkuA
 Dskt 02 I bdkj o.kēkykA
 Dskt 03 I fu/k & Loj] 0; tū] fol xA
 Dskt 04 ydkj & yV] yV] yM+] ykV] fof/kfyM+xA
 Dskt 05 iR; ; & äk] rēw] Y; iA
 Dskt 06 iR; ; & ä] äor] "r] "kkuA
 Dskt 07 I ekl , oa idkjA
 Dskt 08 okP; A
 Dskt 09 I e; A
 Dskt 10 I [; kA
 Dskt 11 "kCn: i] I ozuke] räka
 Dskt 12 mil x] v0; ; A
 Dskt 13 iR; ; & ry] Ro] Bd] Vki] er] buA

Size 50x 65 cms. Laminated and Attached with Durable Strips OR
 Size 50x 65 cms. Laminated & Framed on NU-Wood Board



MUST HAVE MOTIVATIONAL CHARTS / POSTERS FOR SCHOOL / HOSTEL WALLS

Scientists / Leaders other than above mentioned list can be made available

Rare Collection of Psychology Chats on Page No. 1. for University & Colleges

Management Chart

MEDIUM SIZE 20"x26"

big Size 30"x40"

Laminated Framed on Board

attached with white roller

Motivational charts another new addition from the house of Dbios These charts are not only useful in management institutes but also to all educational institutes and schools However, these charts can be hanged on walls of hostels as well as School corridors. You can select from the below mentioned details.

Values charts

1. Cooperation
2. Freedom
3. Happiness
4. Honesty
5. Humility
6. Love
7. Peace
8. Respect
9. Responsibility
10. Simplicity
11. Tolerance
12. Unity

Teacher charts

1. Teacher are lousy mind Readers
2. Teacher don't have clones
3. Teacher are not machines
4. Teacher are not Magicians
5. Teachers don't have x-ray vision
6. Teachers don't have magic wands

Behaviours charts

1. Code of Behaviour
2. Good Manners.
3. Good People skills
4. Good social skills
5. Good values
6. The Behaviour wheel.

Motivational Poster charts

1. The Top 6way's to Deny you have a Problem.
2. Find the reason to stay home from School.
3. Study Skills
4. Overconfidence

Basic skills charts

1. A Successful Life
2. B. Tech
3. Customer Service
4. Engineer
5. Good Manner
6. Hard Work
7. Leadership
8. Management
9. MBTI Personality test
10. Personal Interview
11. Personality test
12. Project Management
13. Quality
14. Recognize Your Creator
15. Resume preparation
16. Self Improvement For Student
17. The Group Discussion
18. The Written Test
19. Think
20. Time Management
21. Body Language
22. Entrepreneurs who changed the world
23. Entrepreneurship
24. Entrepreneurship Ideas
25. Incubation
26. Influencing People
27. Body Building
28. Presentations Skills
29. Responsibilities of faculty members
30. Student Ideals
31. Saving lives
32. Student Welfare
33. Moral Values
34. Never ever give up

30"x40"



20"x26"




MUST HAVE MOTIVATIONAL CHARTS / POSTERS FOR SCHOOL / HOSTEL WALLS

Scientists / Leaders other than above mentioned list can be made available


Impressive, Stunning, Valuable & the best 48 Charts as per International Standards

Laminated & Framed on Board Size 20x26"

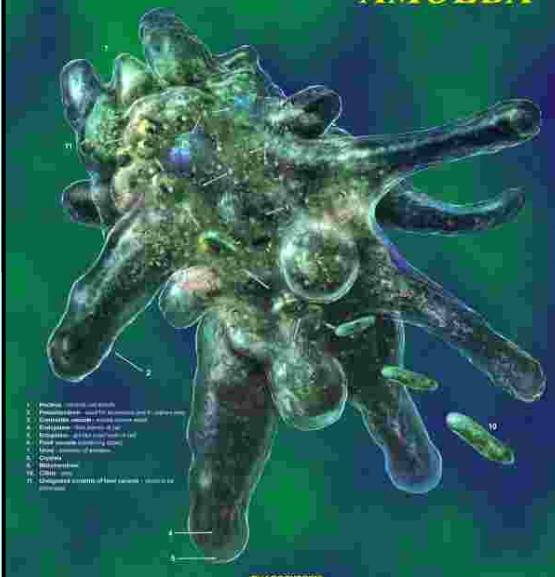
FLORAL DIVERSITY
FLESHY FRUITS
GENETICS -I
GENETICS II
GENETICS -III
IMMUNE -I
IMMUNE -II
IMMUNE -III
VOLVOX
OSMOSIS
PH SCALE
PHOTOSYNTHESIS
MICROSCOPE
MOSS LIFE HISTORY
CELL WALL
CELLS (PROKARYOTIC CELLS)
BACTERIA
BLOOD CELL
LEAF HISTORY
STEM HISTORY
LILY LIFE HISTORY
FERN LIFE HISTORY
EUGLENA



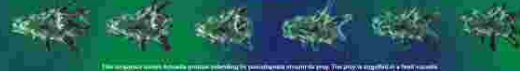
FLORAL DIVERSITY



AMOEBA



PHAGOCYTOSIS



1. Protonema (young sporophyte)
2. Antheridium and foot development
3. Antheridium (male gamete)
4. Foot (protonema) and young sporophyte
5. Young sporophyte (young sporophyte)
6. Spores
7. Spores
8. Spores
9. Spores
10. Spores
11. Spores

Foot development occurs through a process involving the protonema structure. The prophyll is supplied in a foot-canal. The foot-canal consists of a series of cells and the protoplasmic material is released from the base of the foot.

BACTERIAL CELL
BLOOD TYPING
PARAMECIUM
PINE LIFE HISTORY
DROSOPHILA
PORIFERA
MOLLUSCA
ECHINODERMATA
ARTHROPODA
PLATYHELMINTHES
PONDS-I
PONDS-II
PONDS-III
NEMATODE
ANNELIDA
CHORDATA
CNIDARIA
DRY FRUIT
MITOSIS
MEIOSIS
PLANT CELL
ANIMAL CELL
CELL MEMBRANE

